

# CHANNELING VINCENT



Steven Tabor  
2023 (c)



# Channeling Vincent

Starry, starry night  
Flaming flowers that brightly blaze  
Swirling clouds in violet haze  
Reflect in Vincent's eyes of china-blue

-----Don Mclean (Vincent)

Vincent van Gogh remains an enduring figure in art history due to the profound emotional depth and innovative style he brought to his work. His distinct approach to painting, characterized by bold brushstrokes and vibrant colors, paved the way for the Expressionist and Fauvist movements that followed. Van Gogh's art was a reflection of his inner turmoil and intense passion, with each canvas capturing the essence of his experiences and emotions. Despite facing personal challenges and limited recognition during his lifetime, his posthumous influence has been monumental, shaping the course of modern art and inspiring generations of artists to channel their emotions and unique perspectives onto the canvas.

The Van Gogh Museum in Amsterdam has recently released a digital archive showcasing its remarkable collection. Among these treasures, a select few are artfully projected onto a living canvas – the model Ankie Van Kasteren – using a mini-beamer. Van Gogh's paintings were projected continuously on Ankie while she was encouraged to pose freely. Ankie categorizes herself as neurodiverse, which may explain why she seems to have some insight into the thought processes underlying Van Gogh's masterpieces. The fusion of these elements introduces an intriguingly unpredictable dynamic, where the projected images and the living model converge in an unexpected harmony. In certain moments, there is an almost ethereal quality to Ankie's projection portraits, evoking the sensation that she is a conduit for the very spirit of Van Gogh himself.













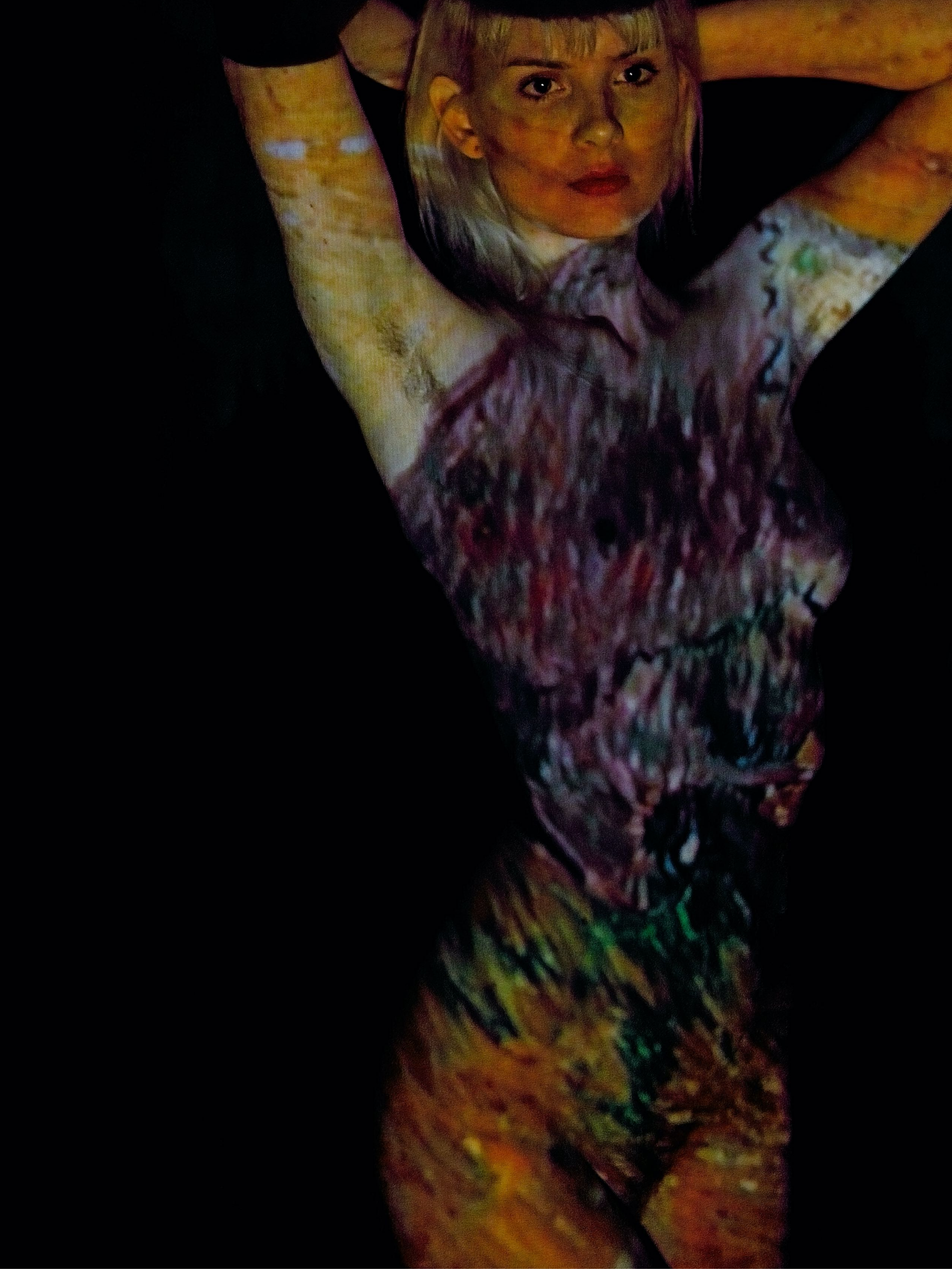
































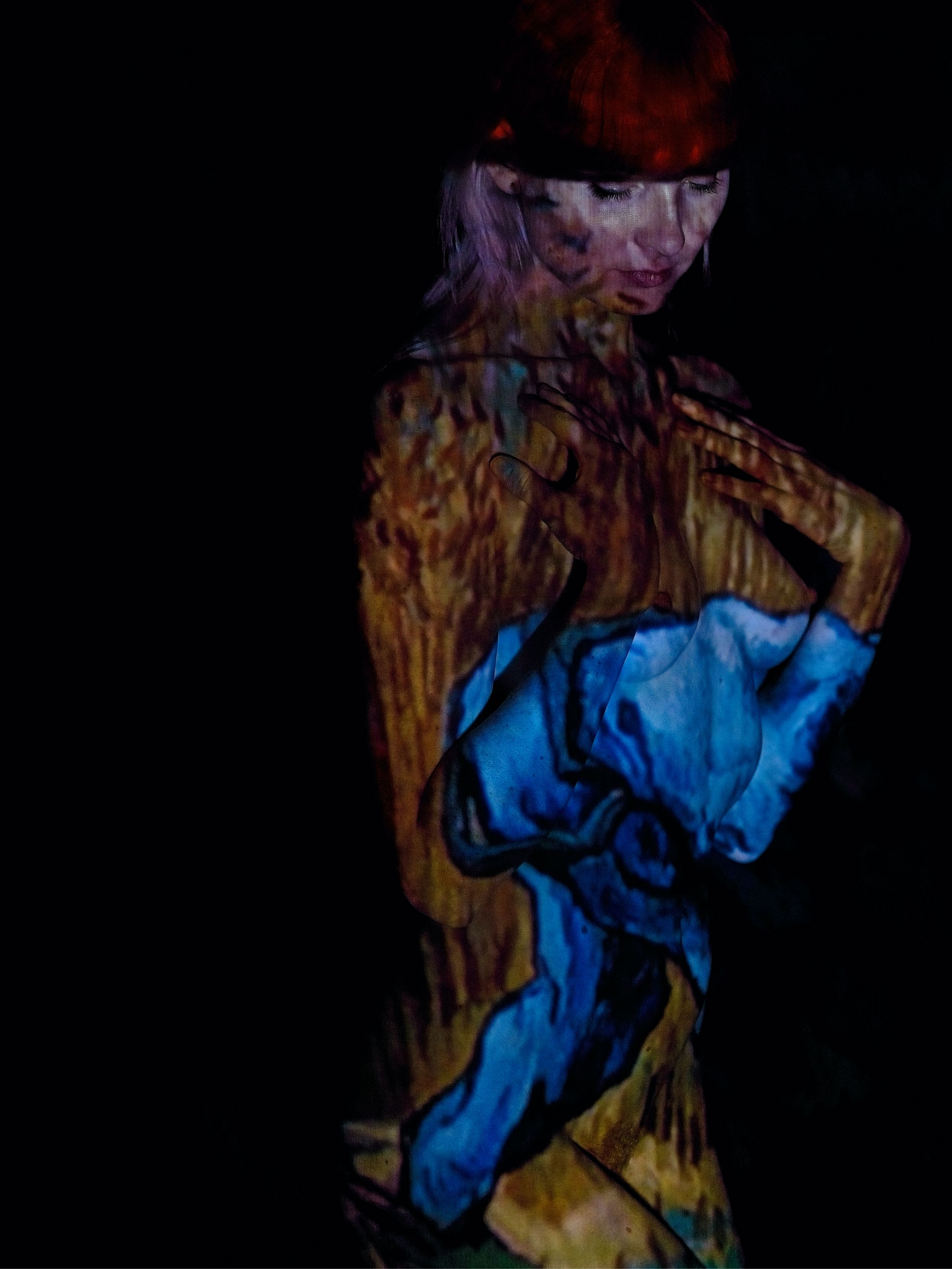




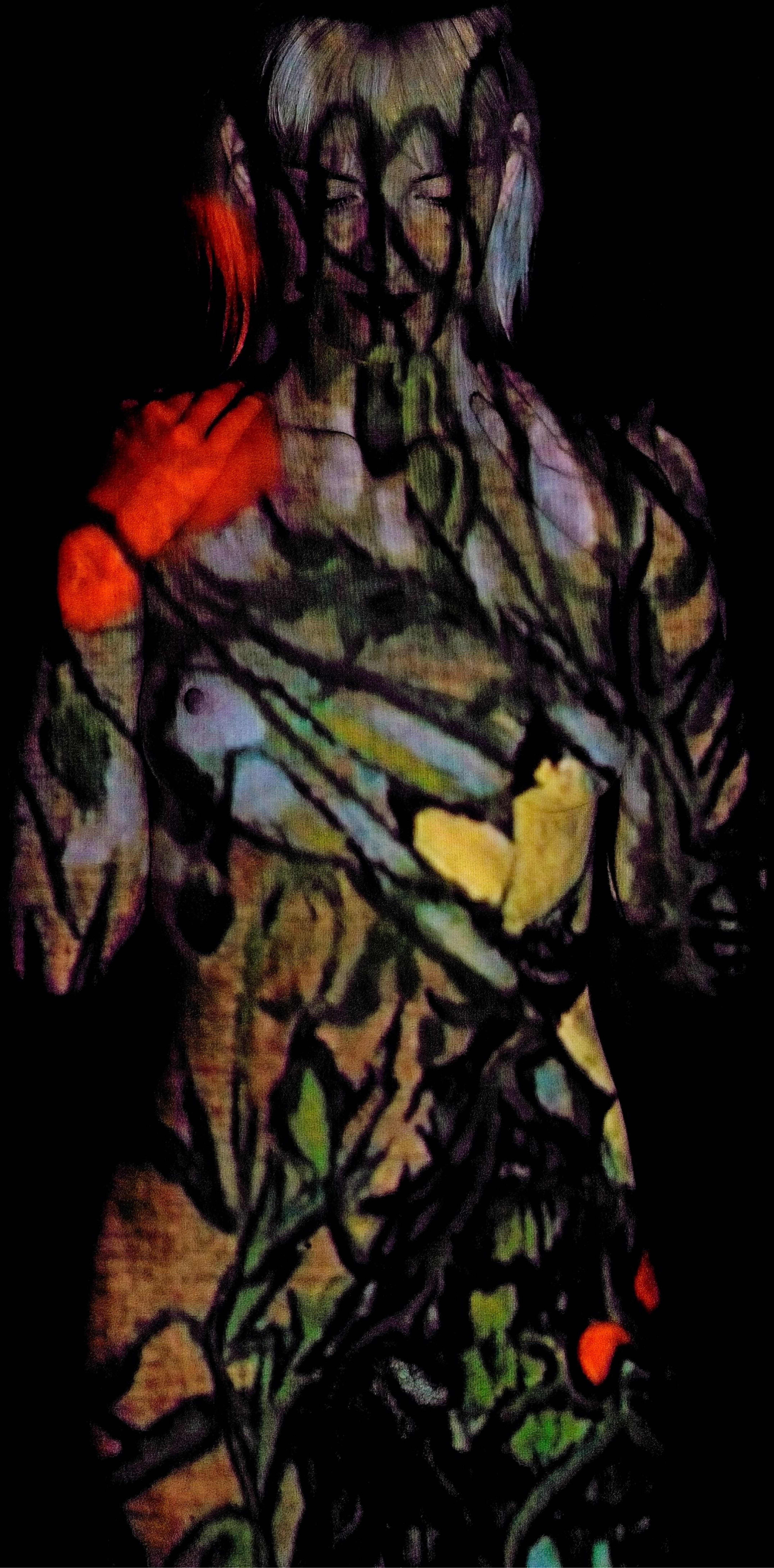








































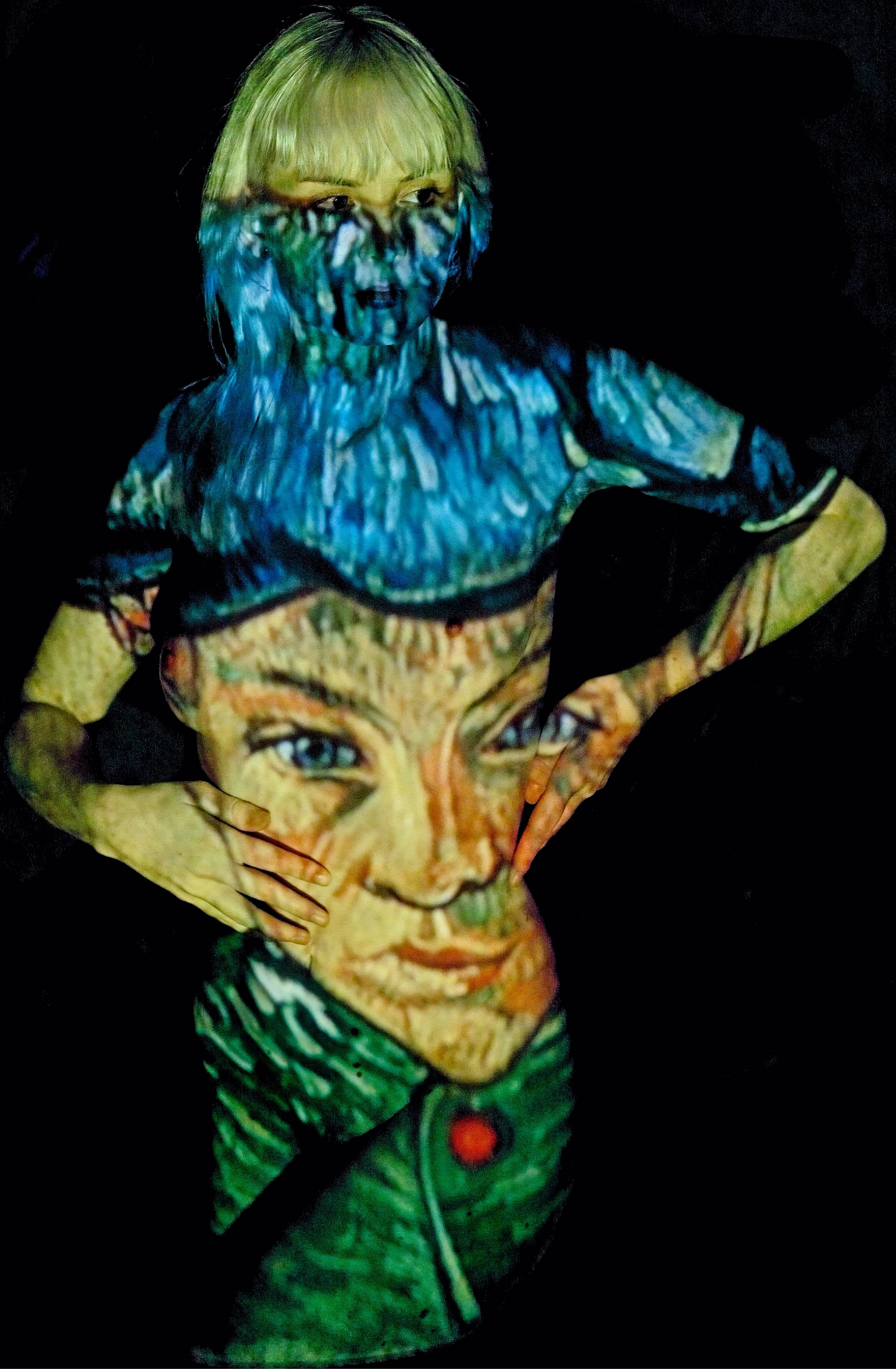




























































































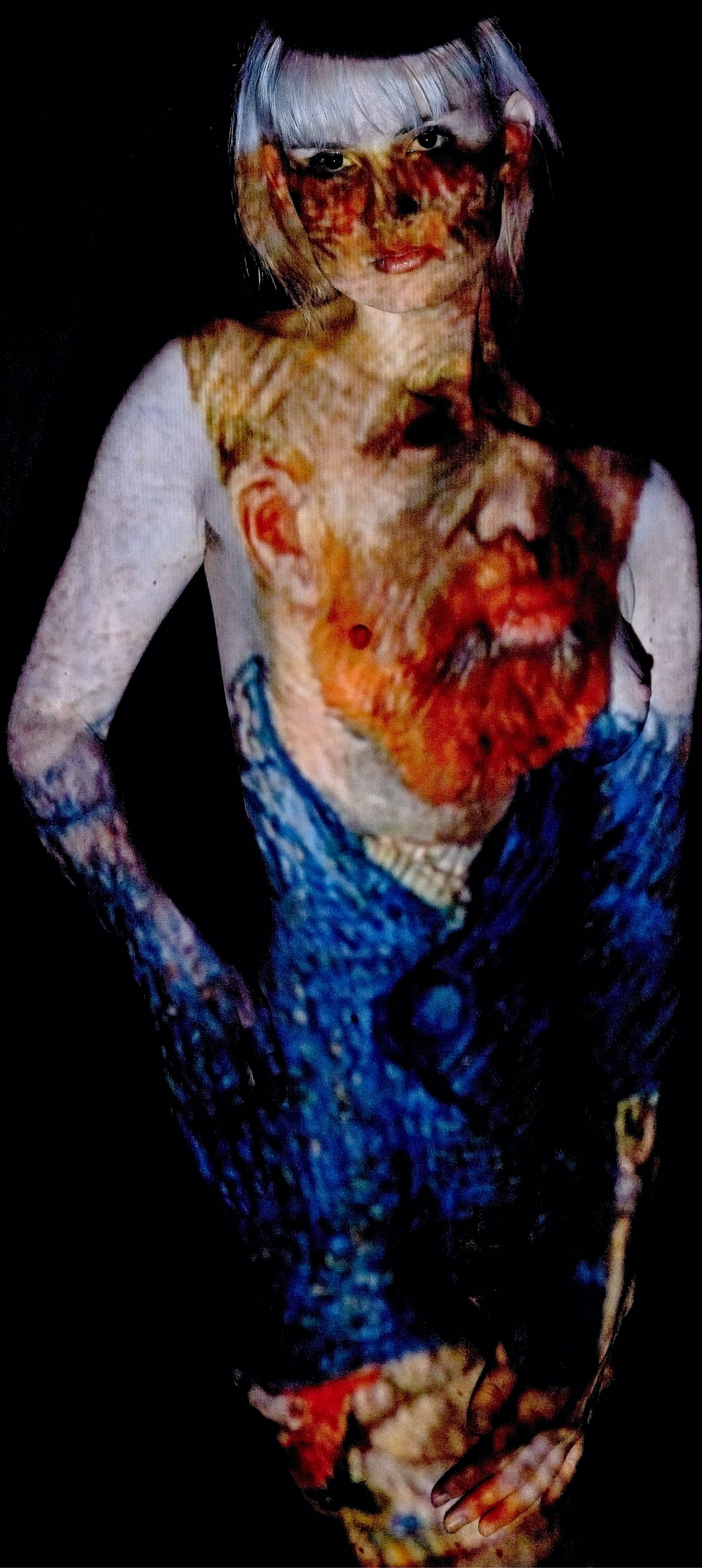












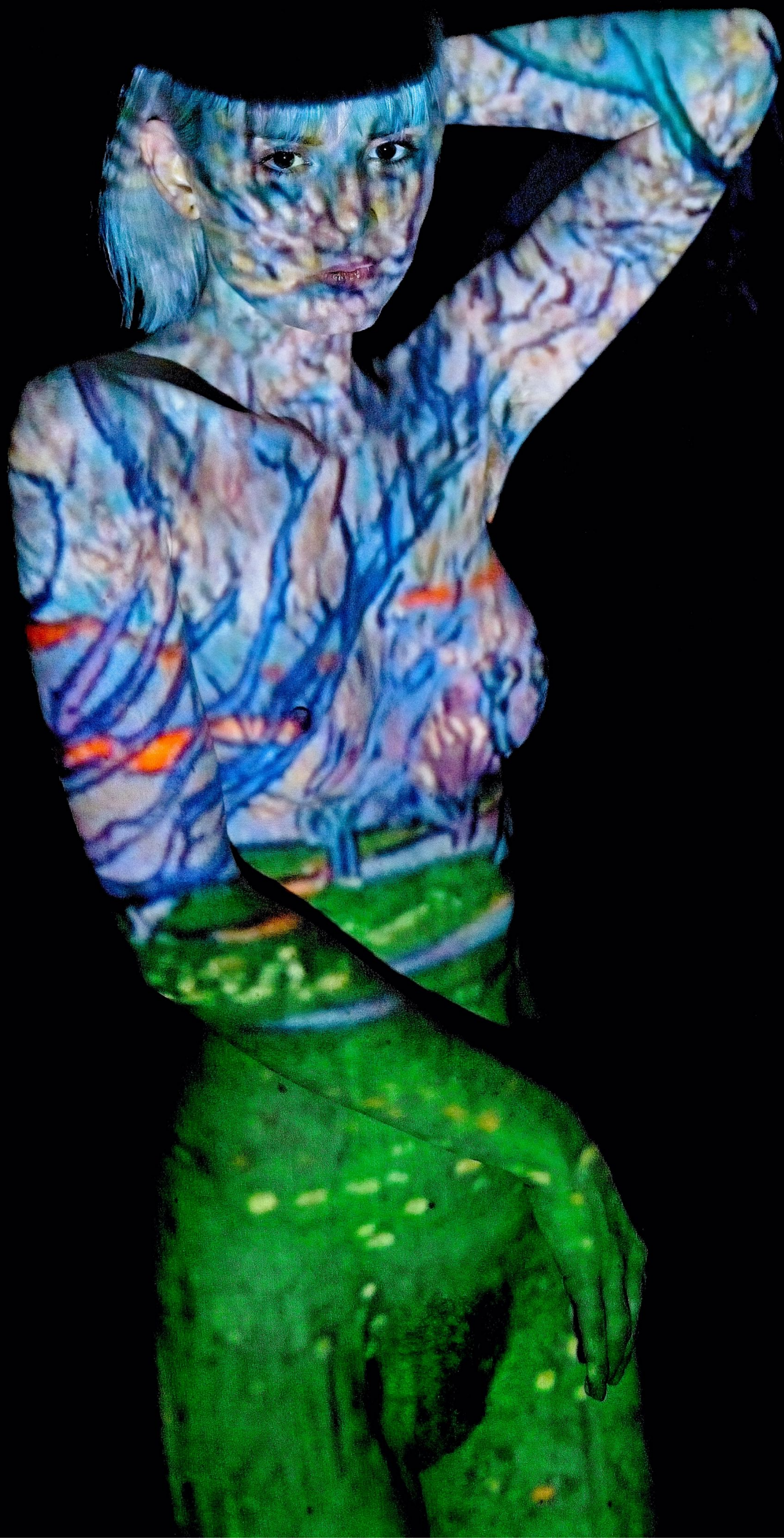




































































































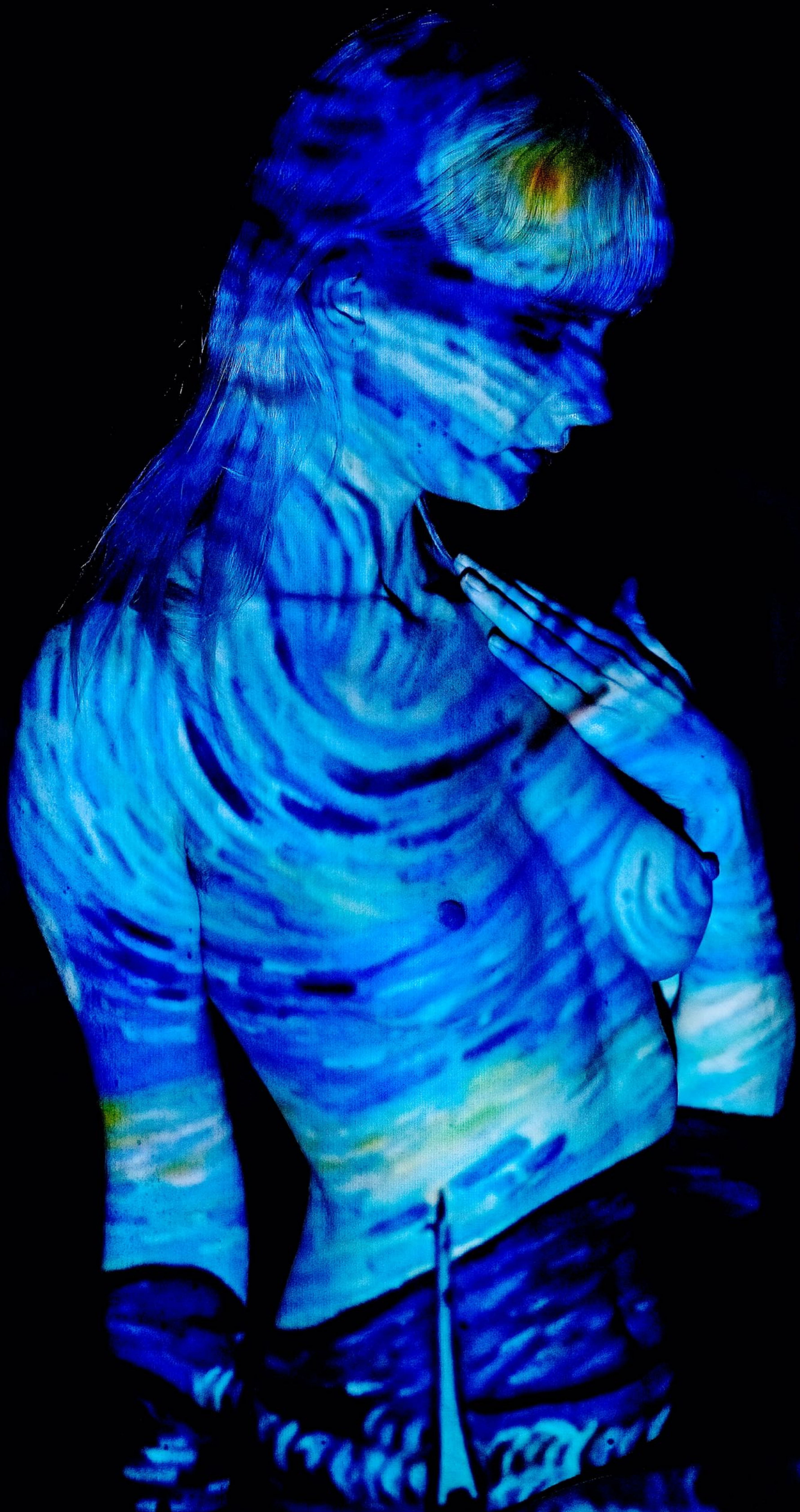




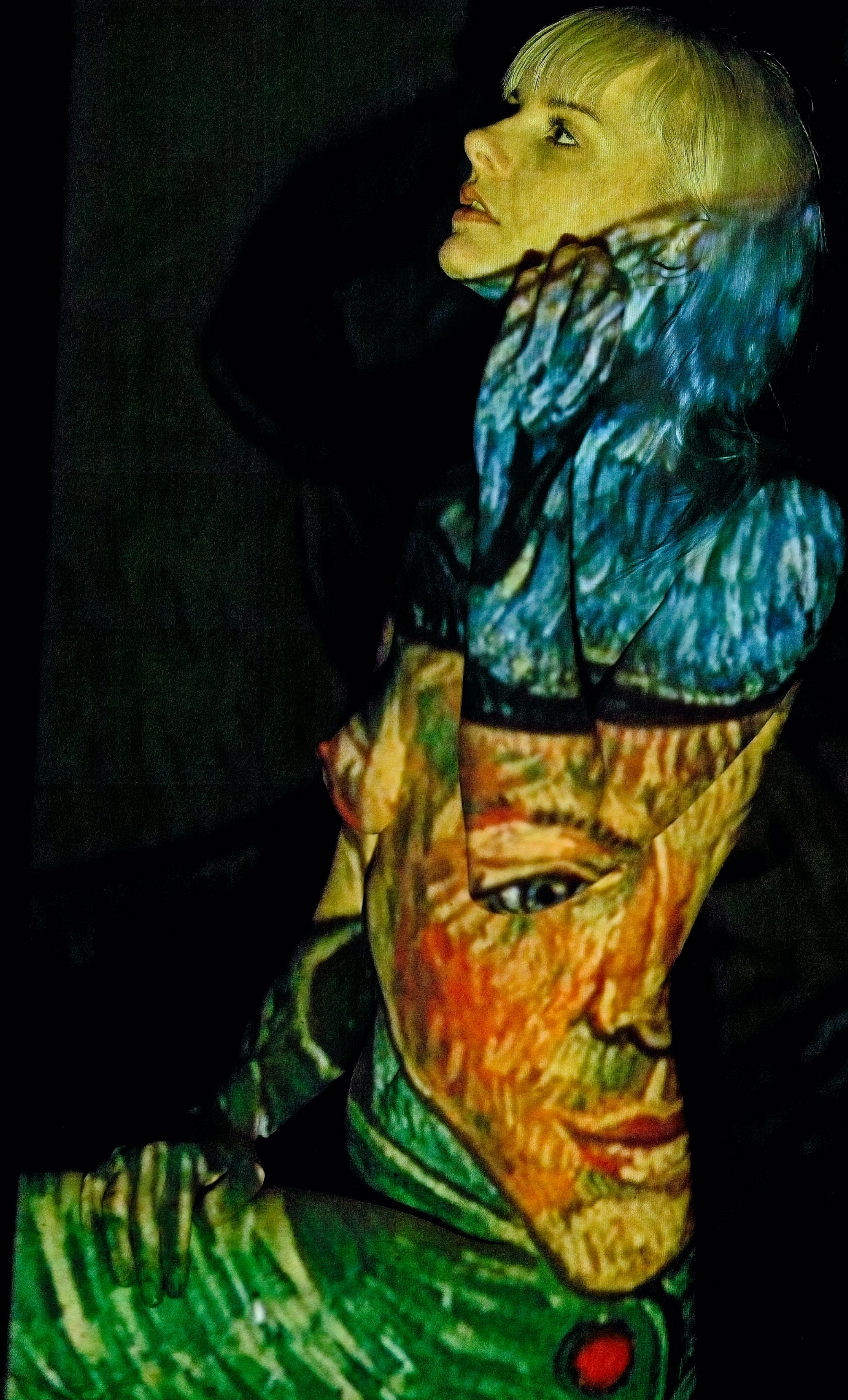






































































# CHANNELING VINCENT

