

Projecting Dark and Moody

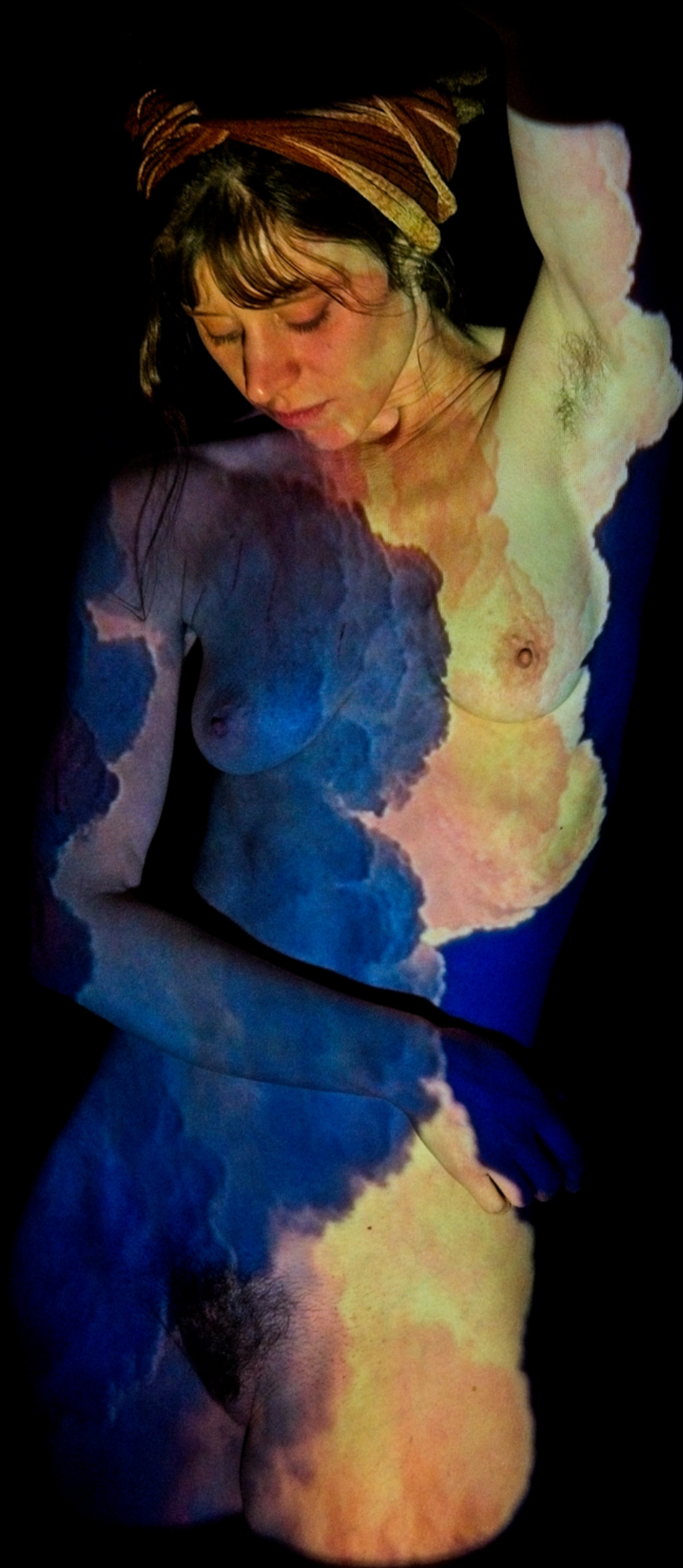


Steven Tabor
2024 (c)

Projecting Dark and Moody

This is a series of projection portraits, in which digital reproductions of images taken from the net were projected, using a mini beamer, onto a model in a dark studio. The images were projected, one after another, in slideshow mode. As a result, the model was only able to see a bright beam of light. As she posed, the images were digitally painted onto her in a three-dimensional, random manner.

In this series, the digital images that were projected were chosen by the model, Solivagant. Solivagant is fond of nature, arts, symbolism, darker themes and classical images. The digital images she selected were a mix of moody nature pictures, organic structures and illustrations that fascinated her in some way. She also included some vintage anatomical drawings, because she liked the idea of matching them on her body. A lot of the images she selected were quite moody and dark, but to her they also hold a lot of beauty. And as the resulting projection portraits attest, what starts out as dark and moody can become quite special in the end.













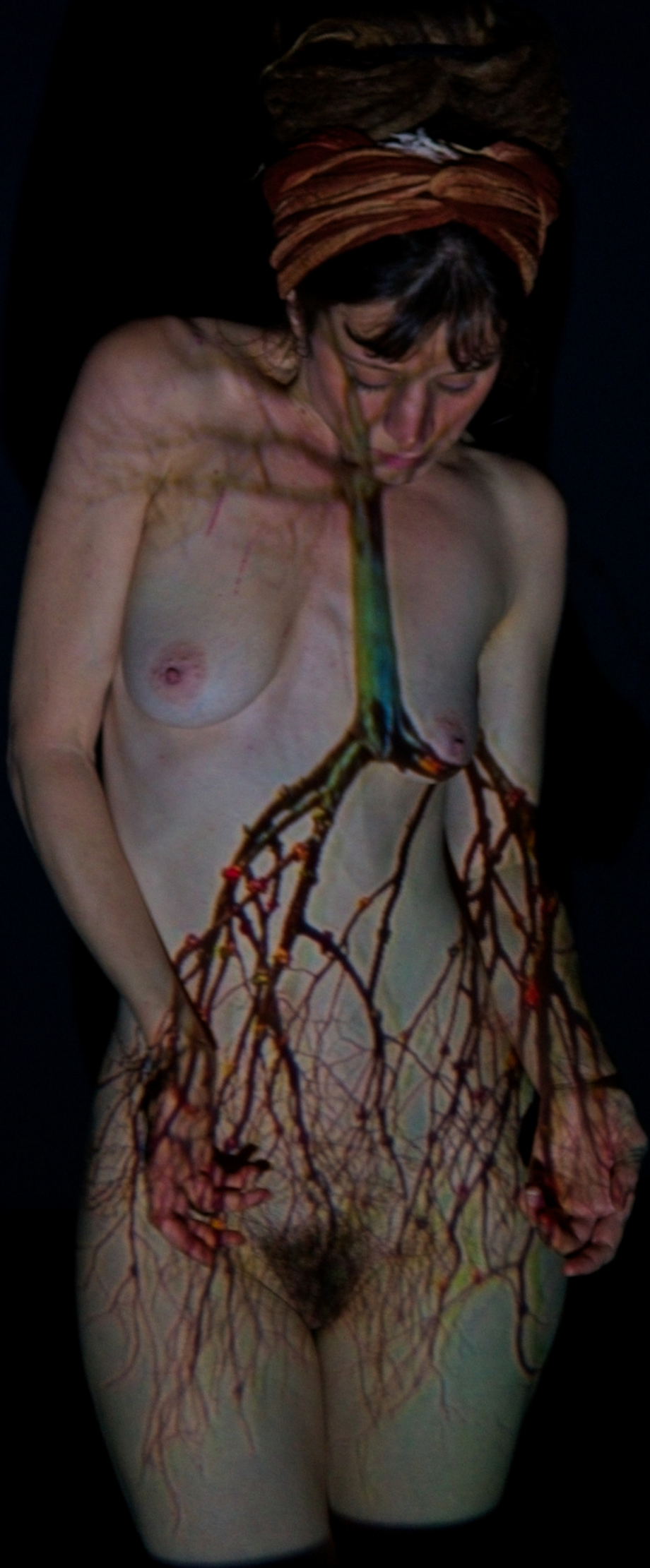


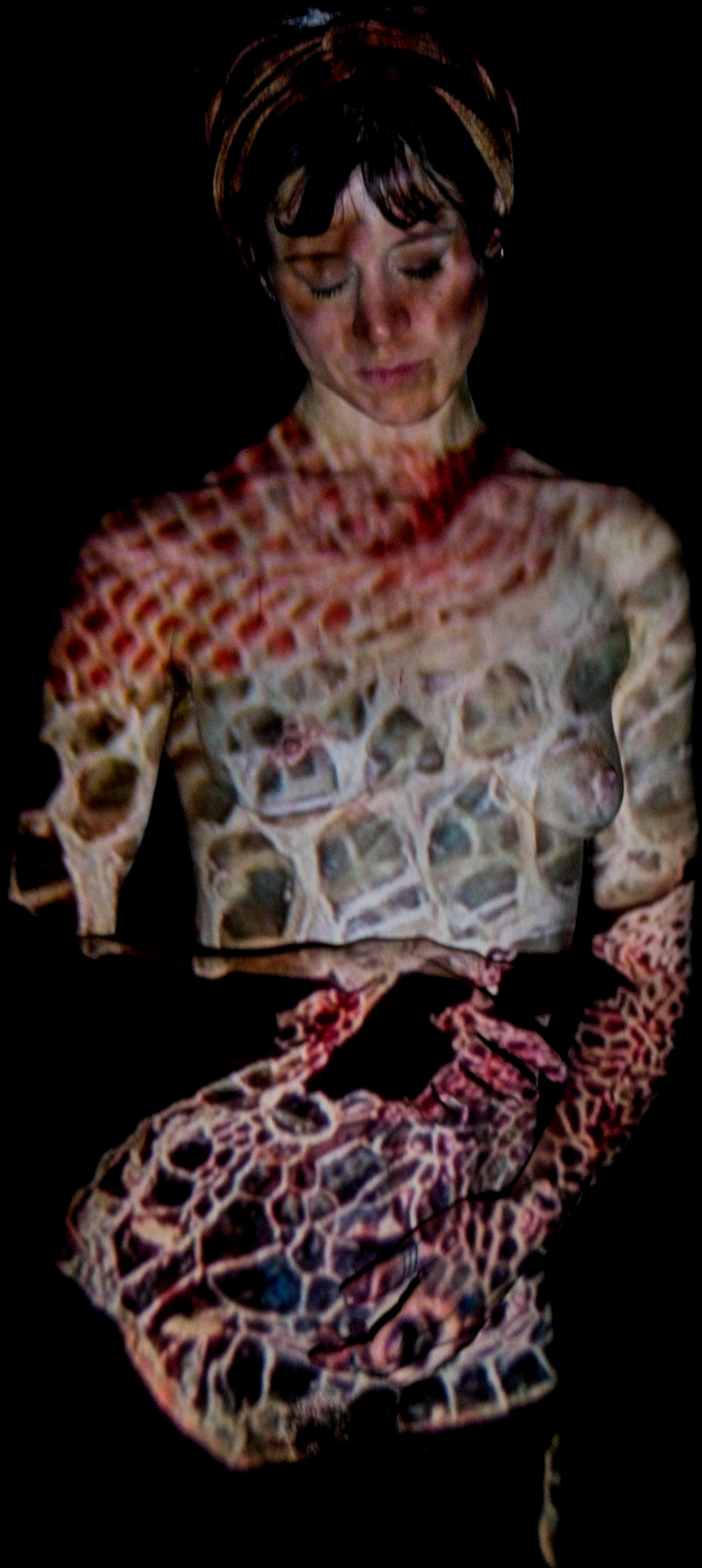












































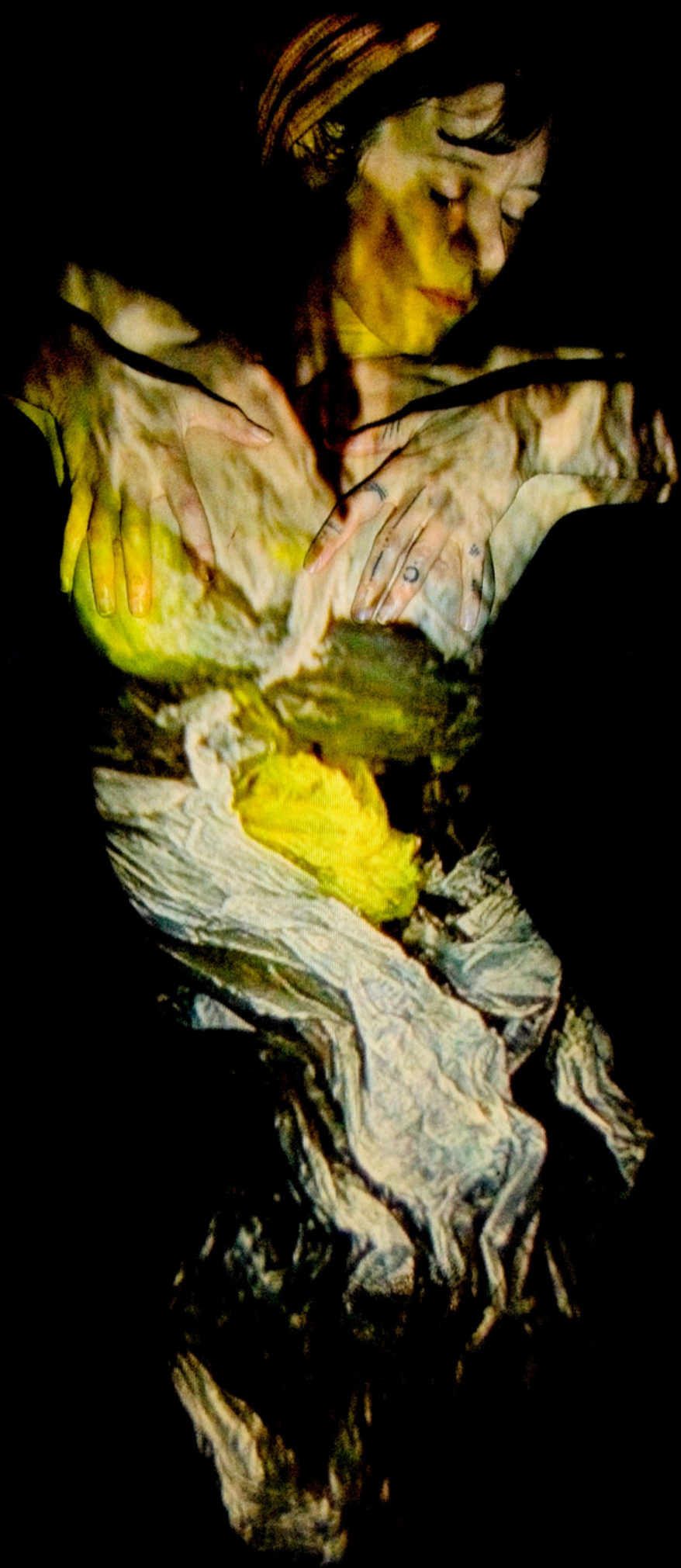


















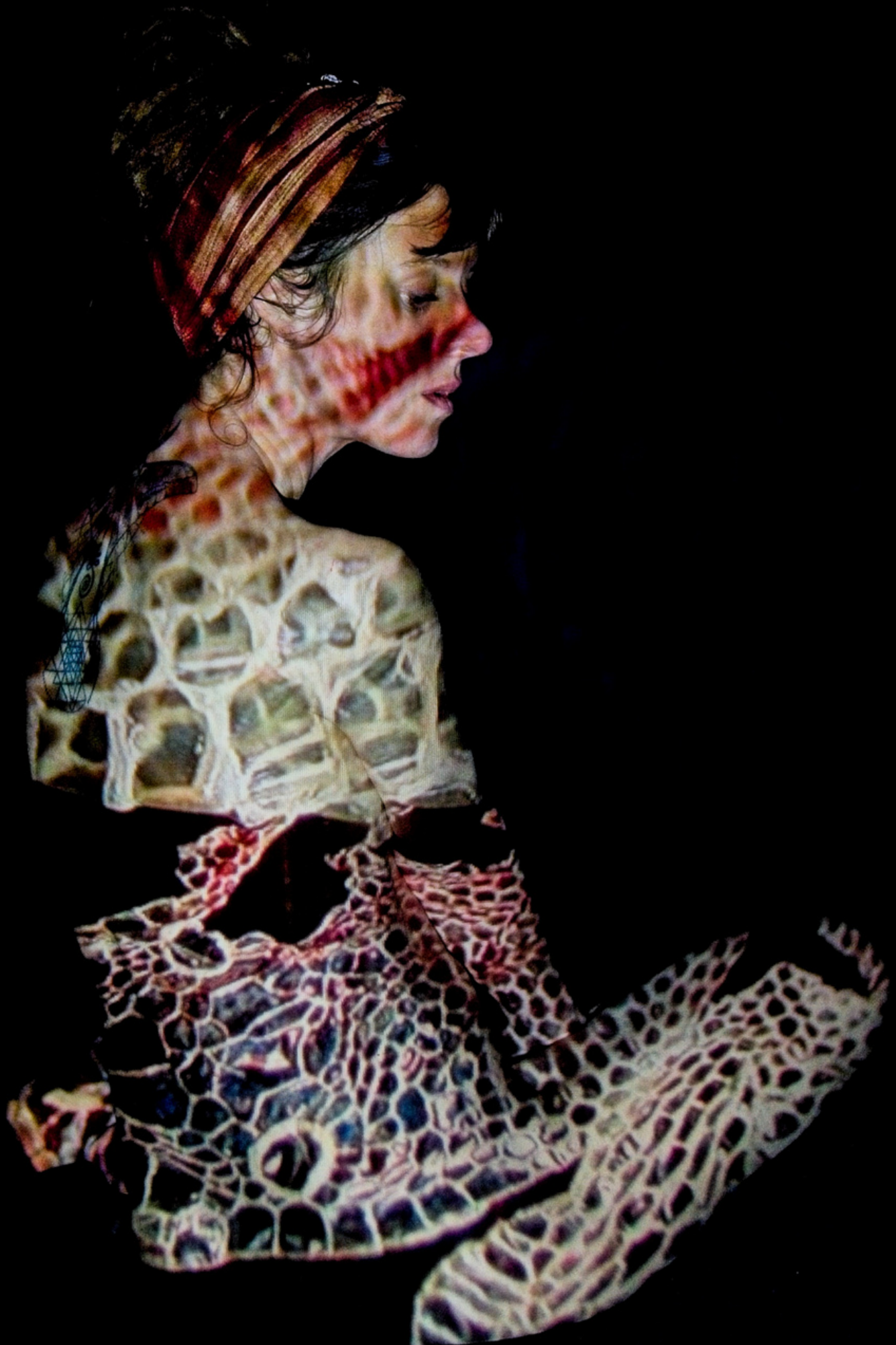






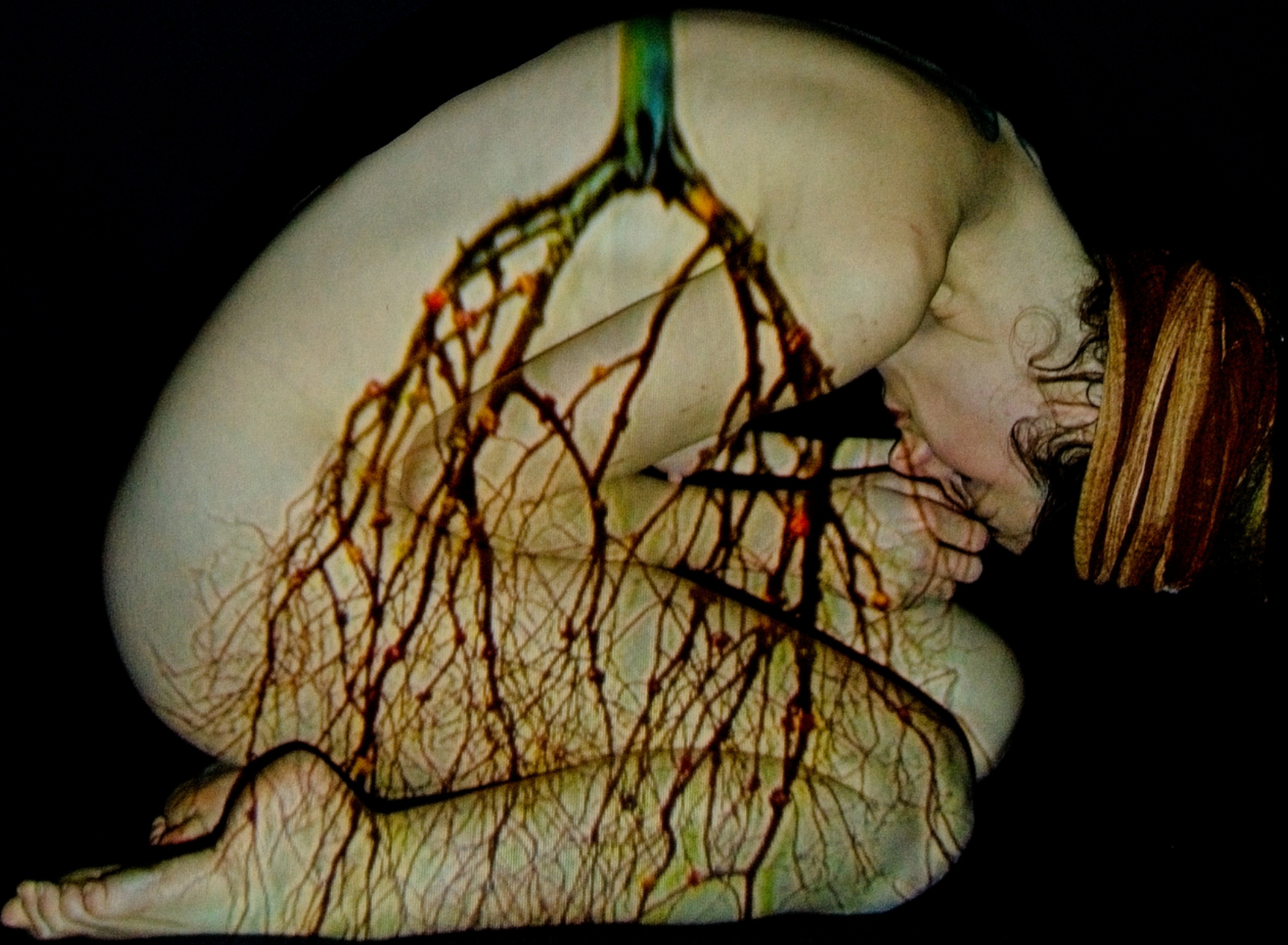
































































Projecting Dark and Moody

