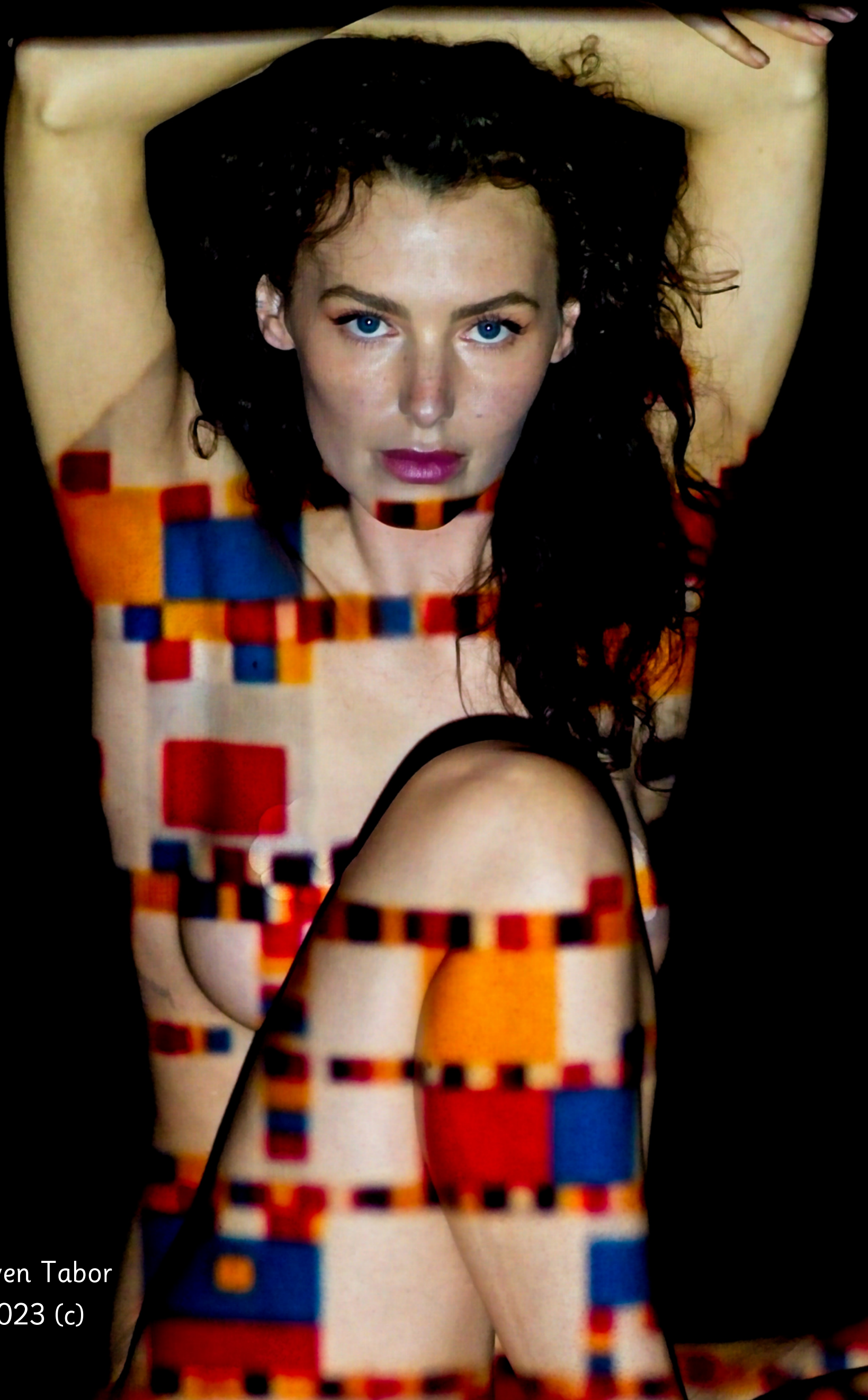


Projecting Mondrian onto Ashleigh



Steven Tabor
2023 (c)

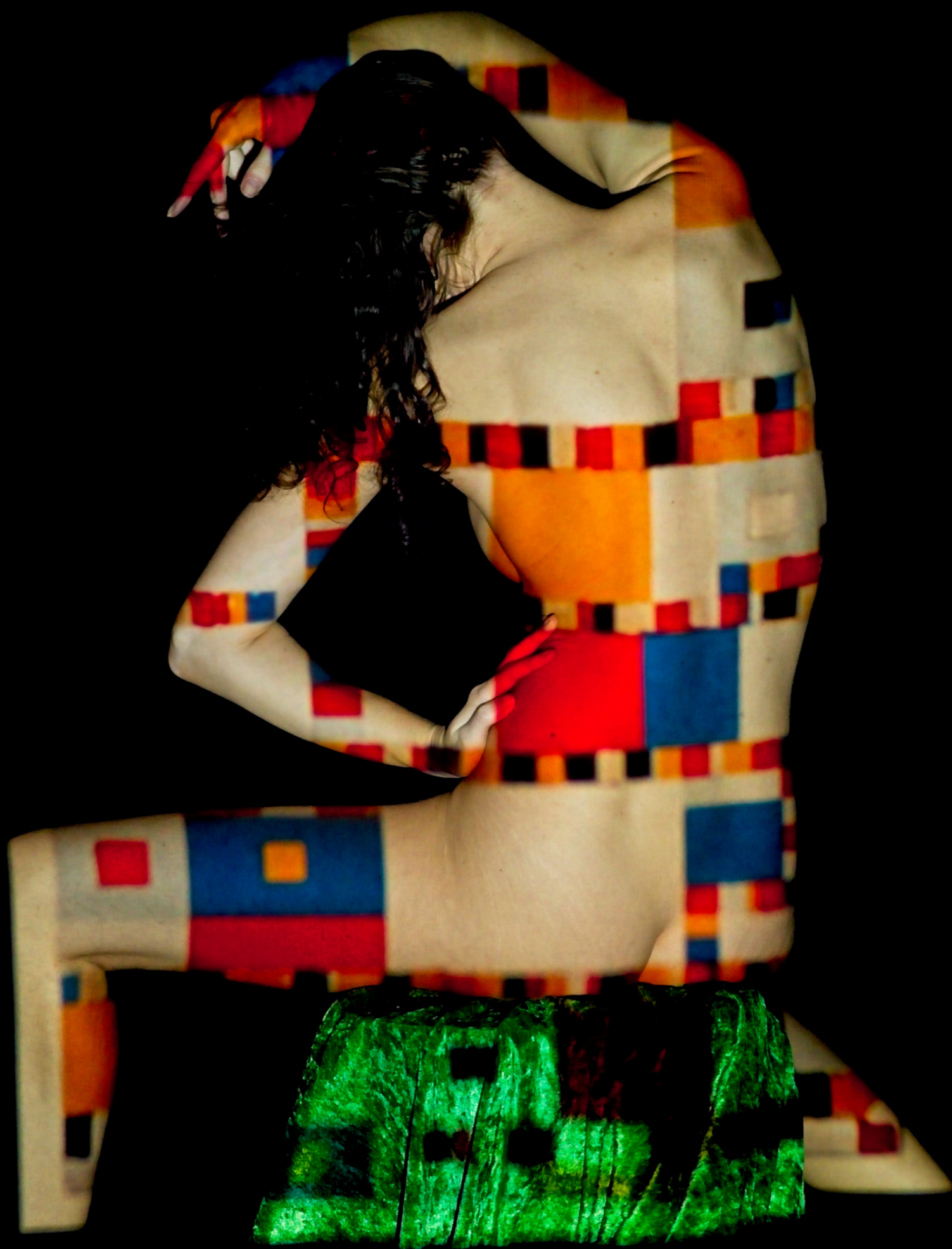
Projecting Mondrian onto Ashleigh

Piet Mondrian, the Dutch painter renowned for his groundbreaking contributions to the development of abstract art, stands as an iconic figure in the realm of modern artistic expression. Born in 1872, Mondrian's artistic journey transitioned from early naturalistic landscapes to the geometric precision that characterizes his mature style. He is celebrated for his distinctive grid-like compositions, marked by the prominent use of primary colors and the meticulous arrangement of horizontal and vertical lines—a style he referred to as "neoplasticism" or "De Stijl." His work serves as a testament to his unyielding pursuit of simplicity and purity in art, driven by a deep-seated desire to distill the essence of the visual world. Mondrian's enduring legacy continues to profoundly influence art, design, and architecture, bearing witness to his lasting impact on the evolution of 20th-century art. In a unique exploration of his work, a series of Piet Mondrian images were projected randomly onto the model, Ashleigh Rae, resulting in visually striking compositions that convey their own distinct three-dimensional geometry.



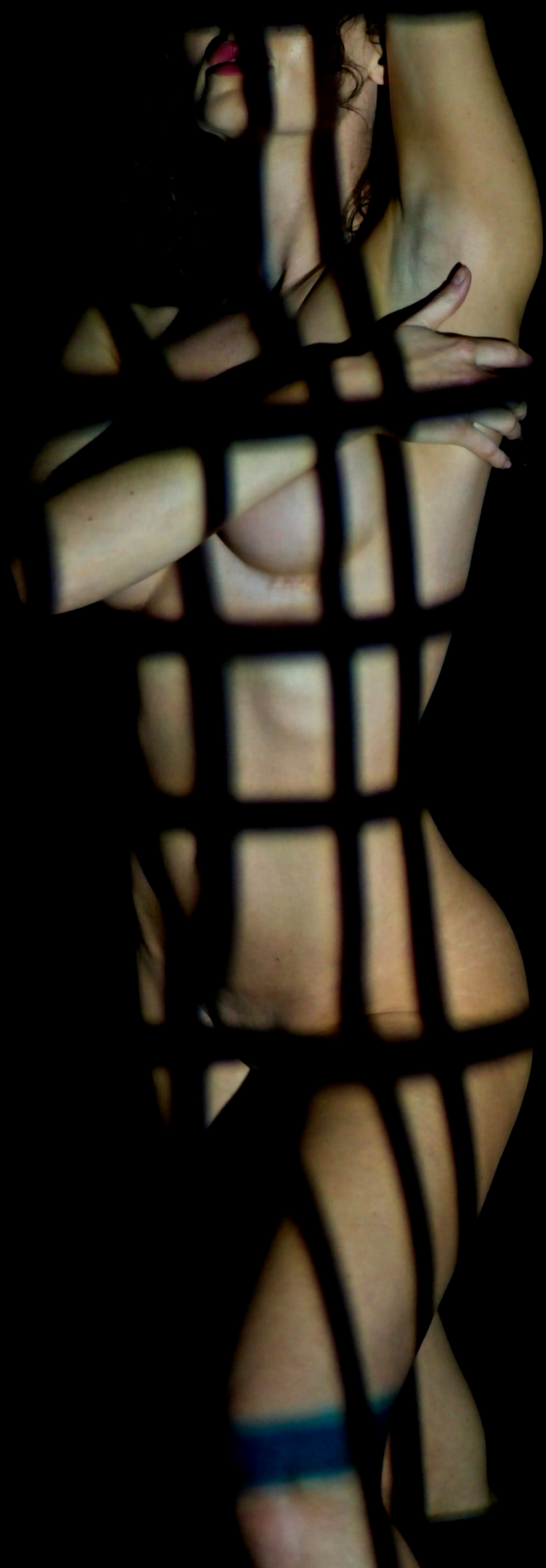


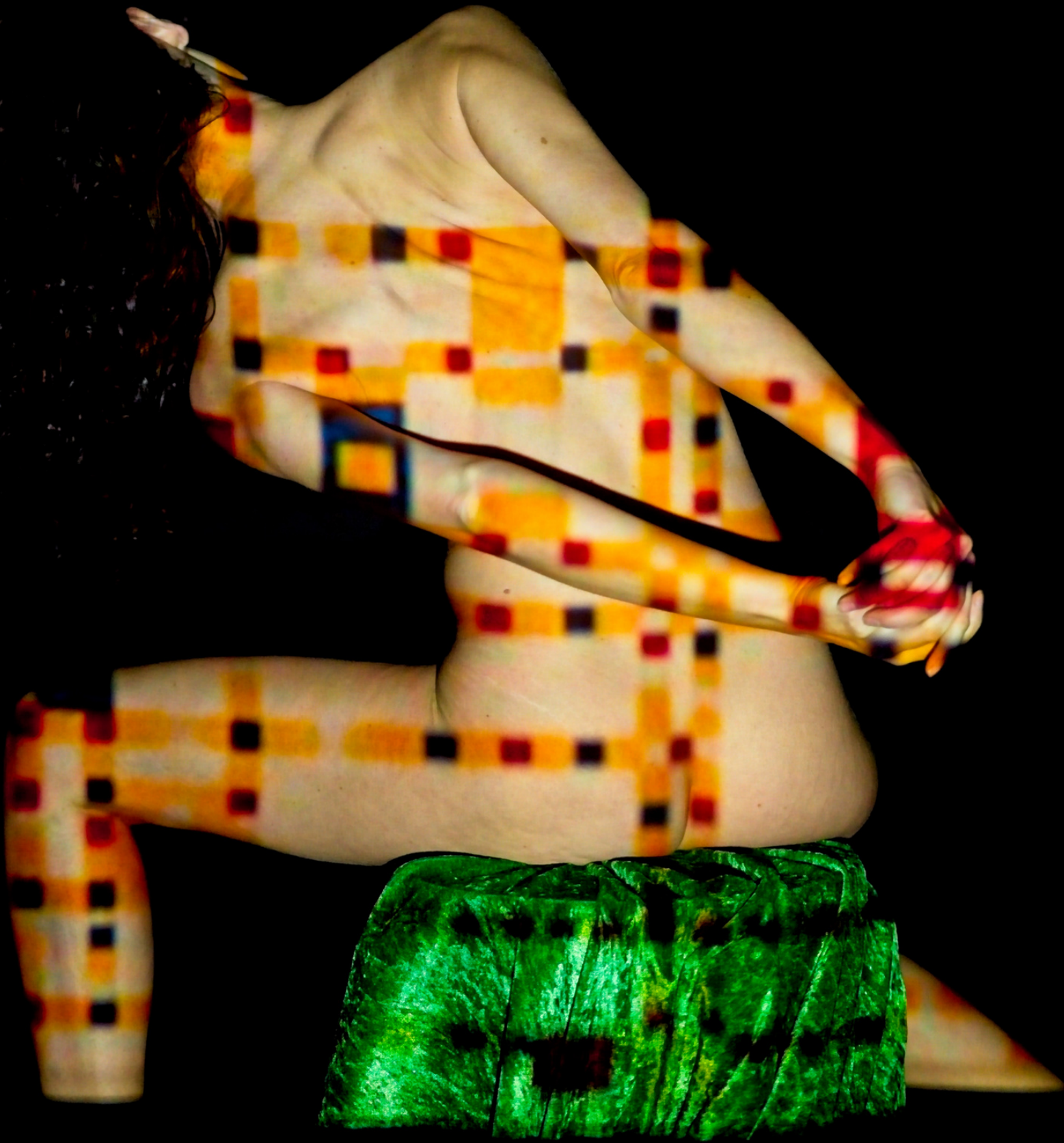
















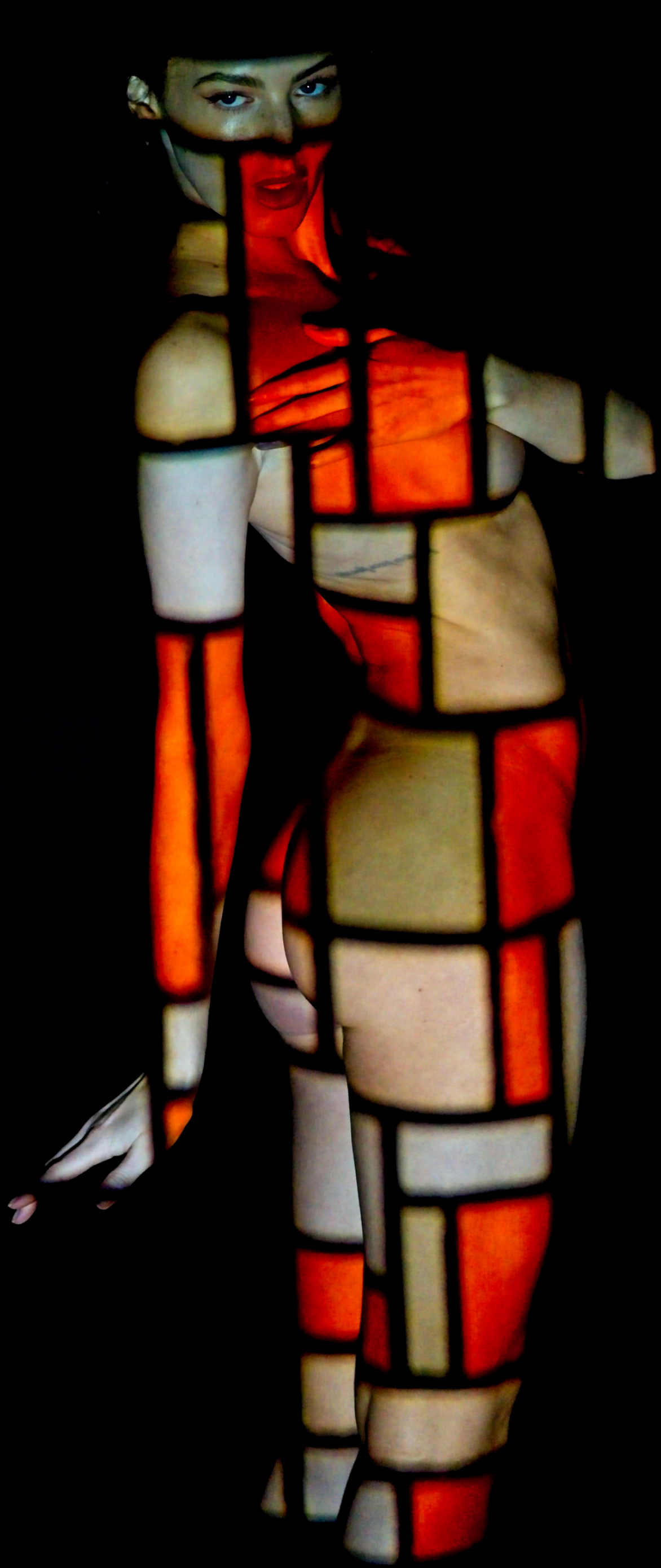


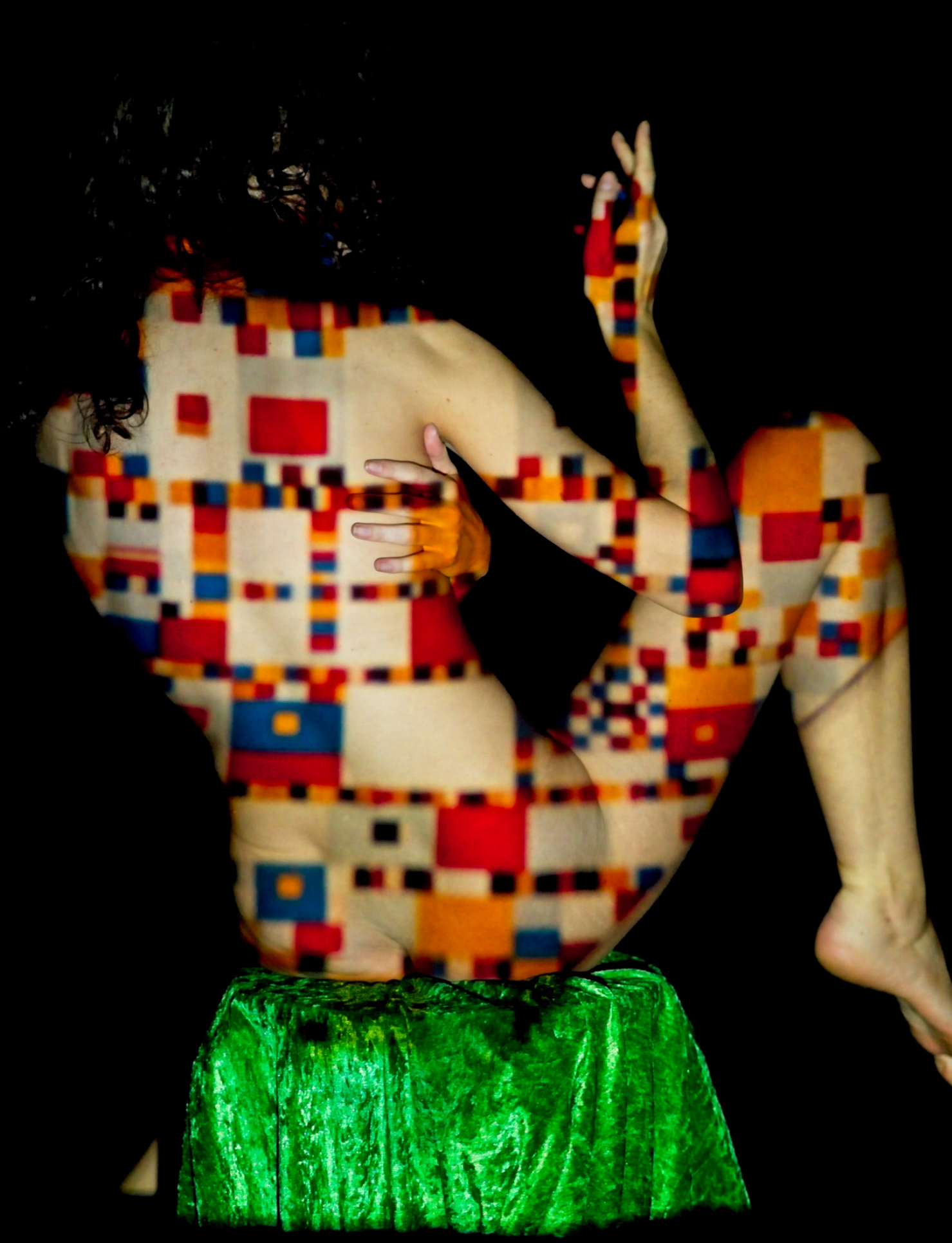














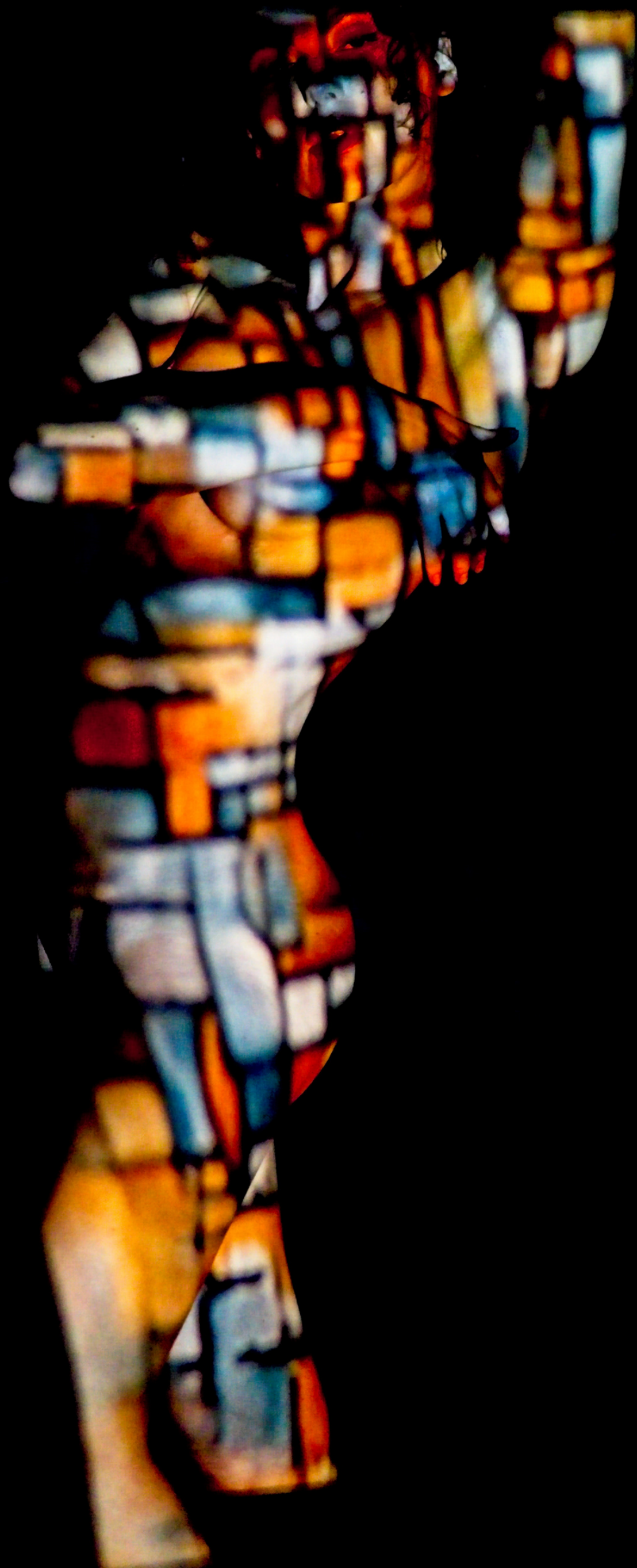
































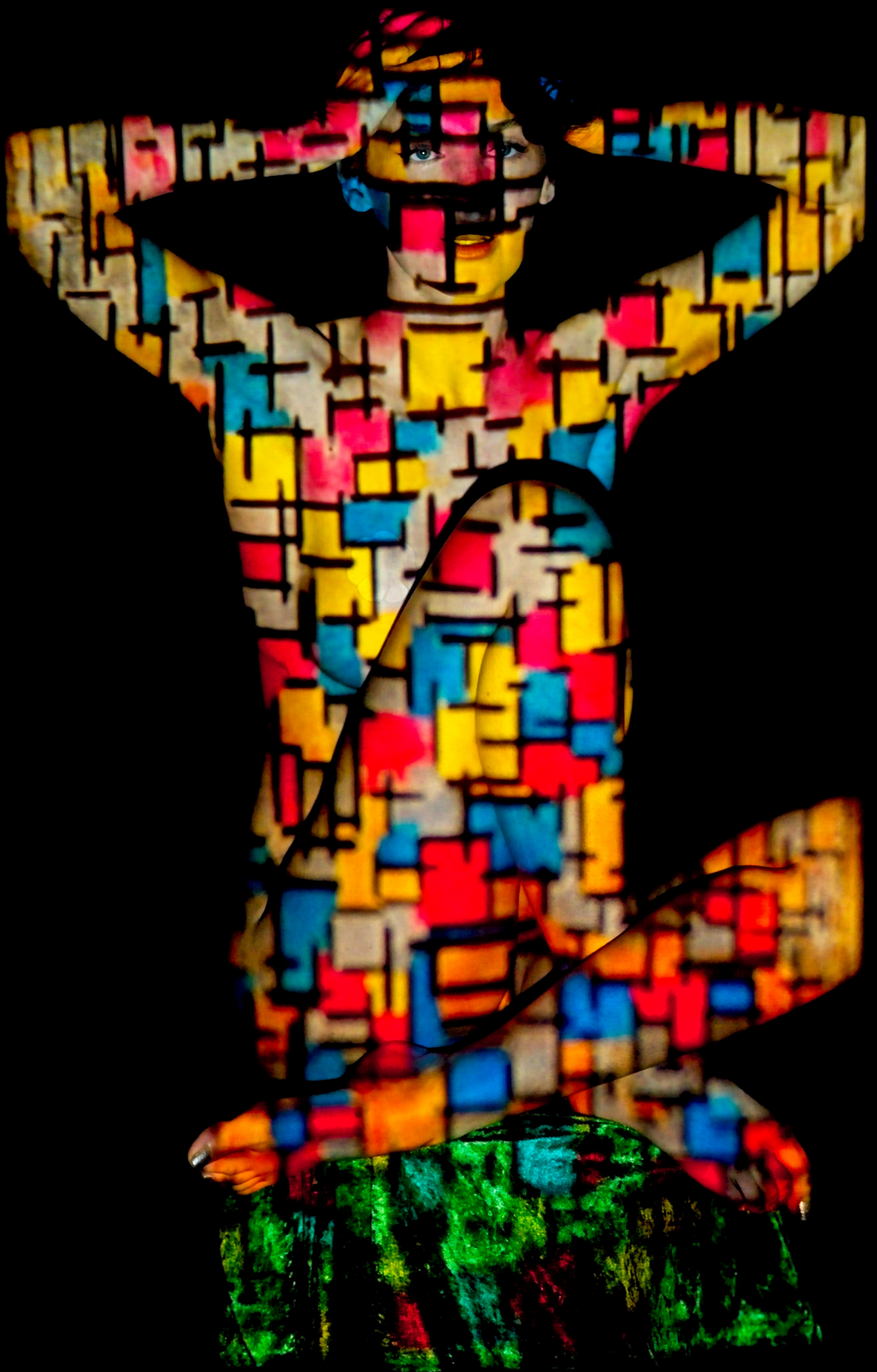


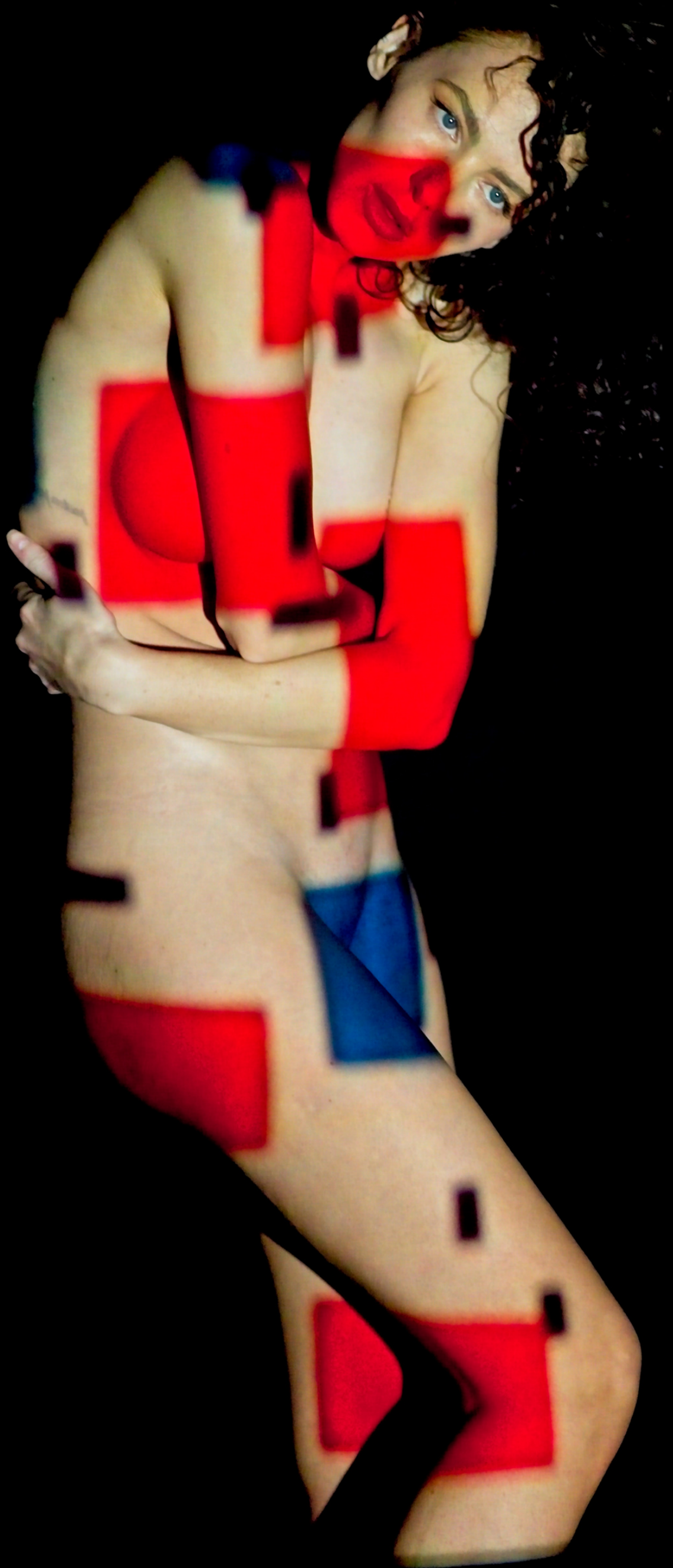


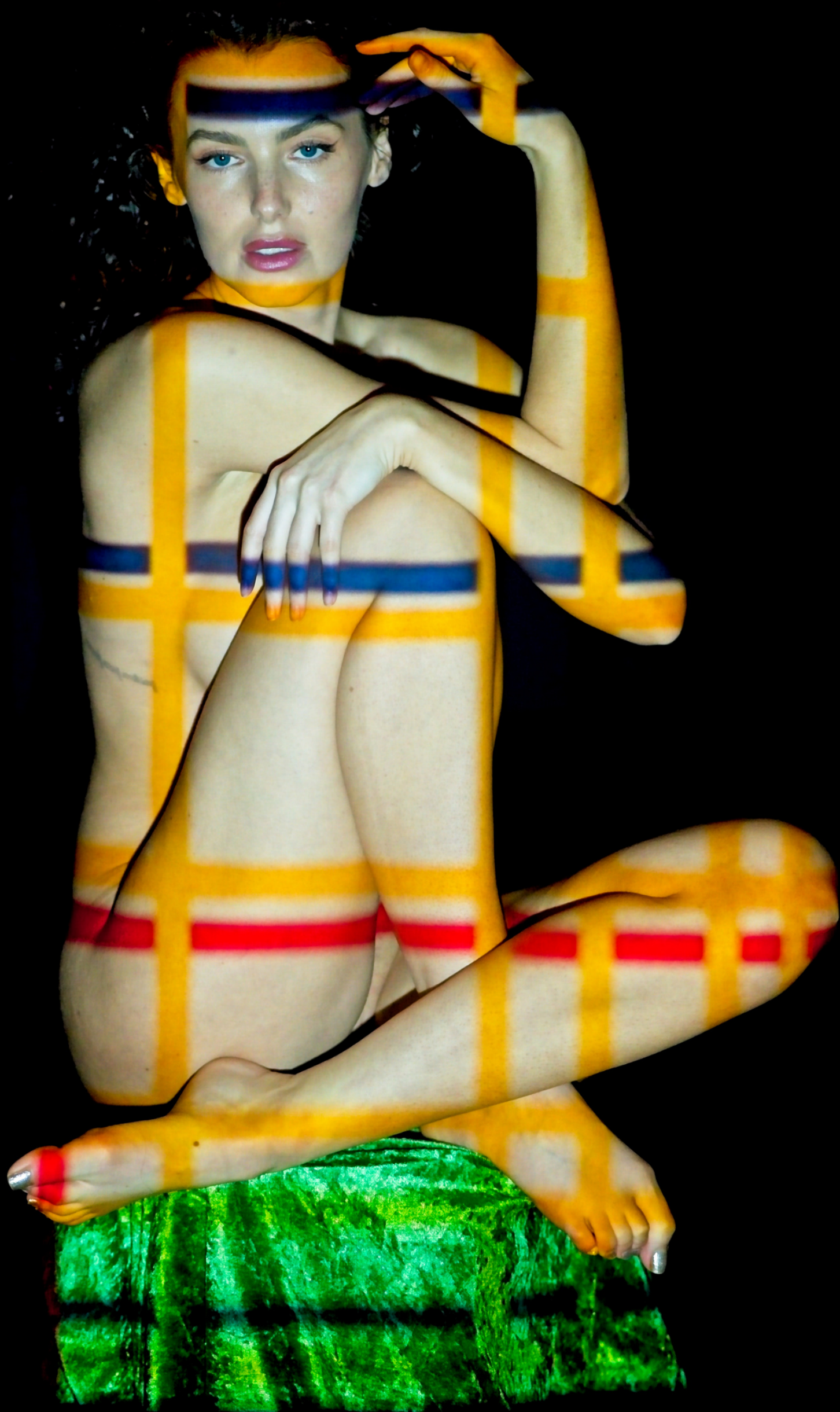


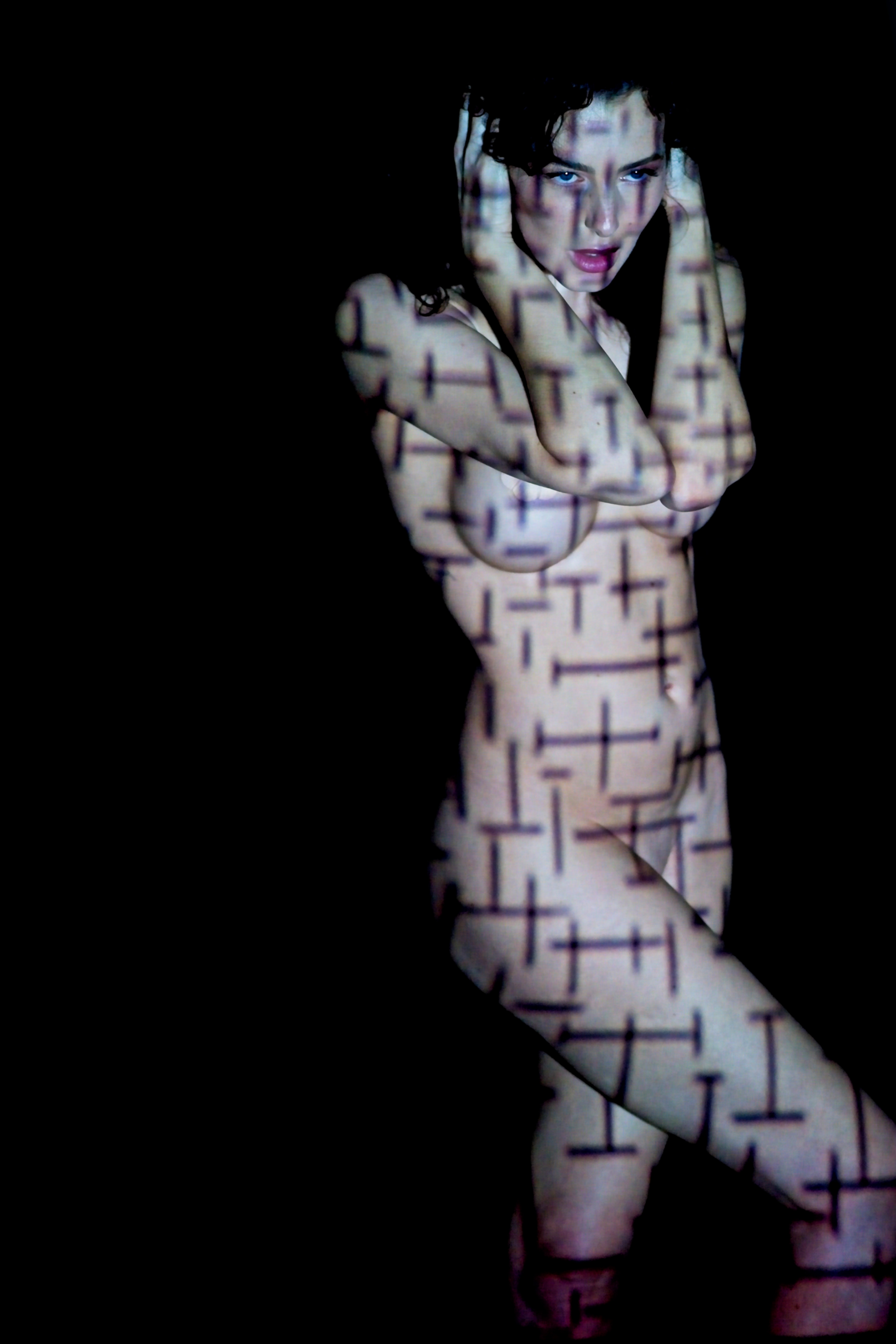


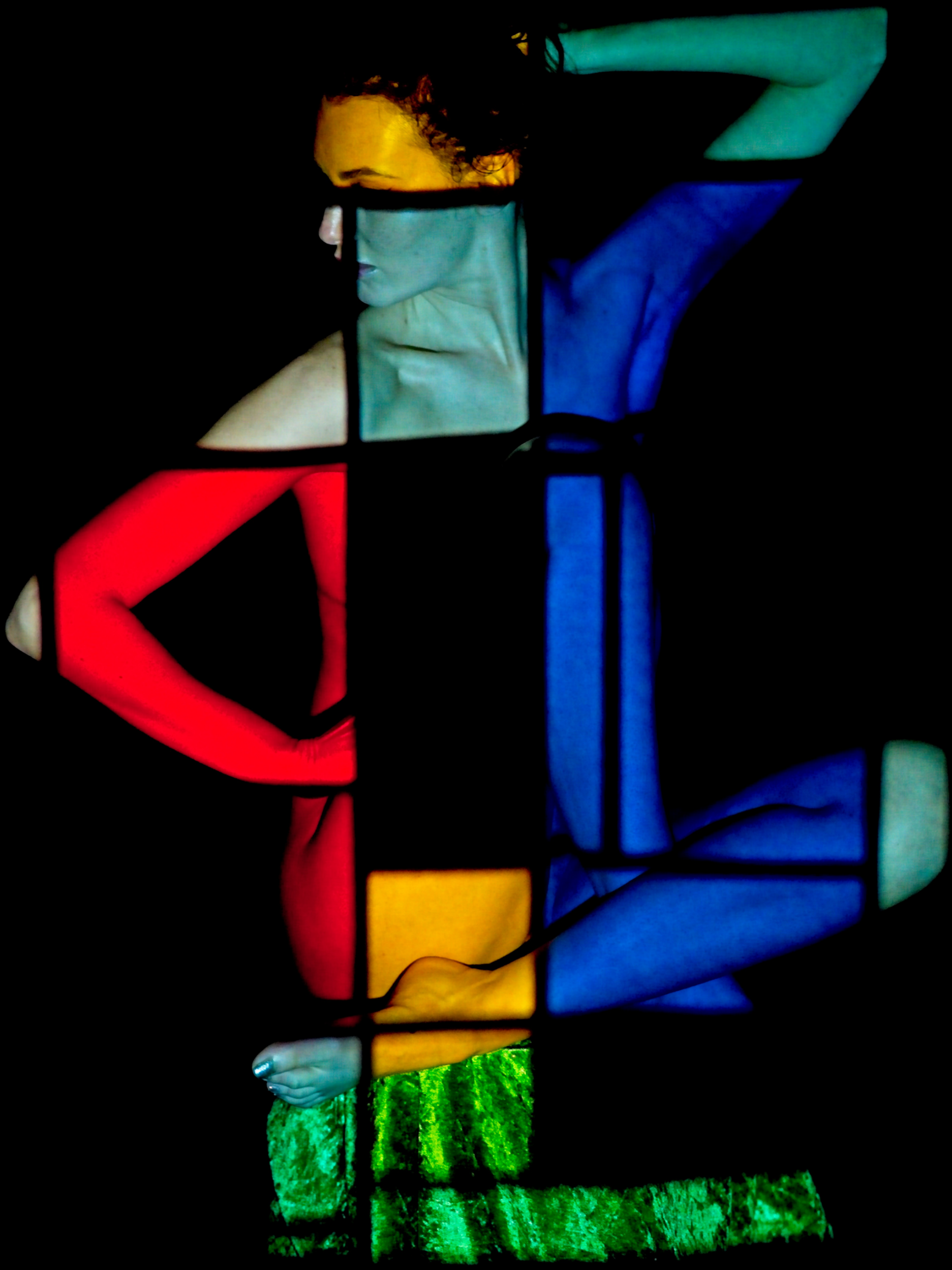


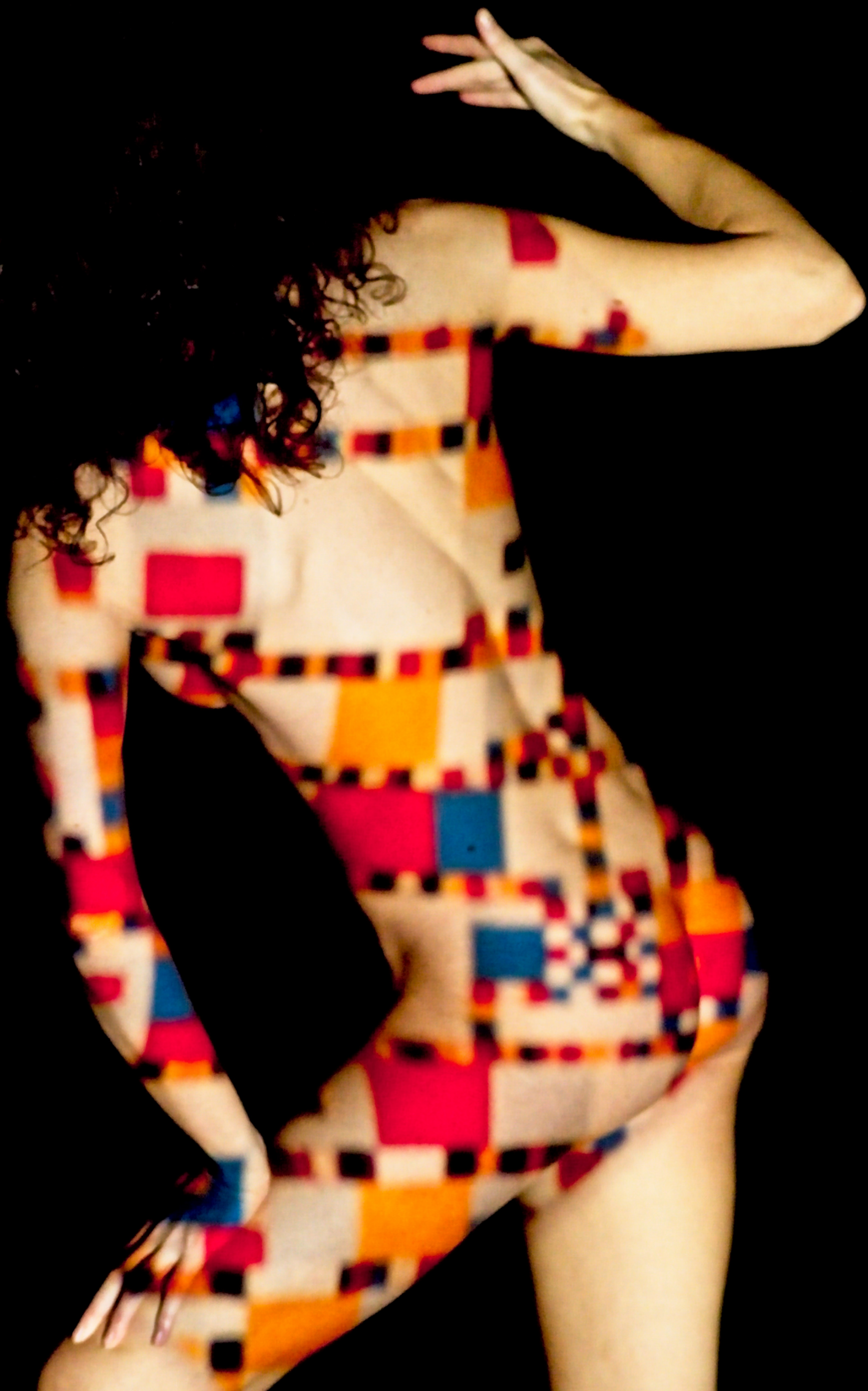








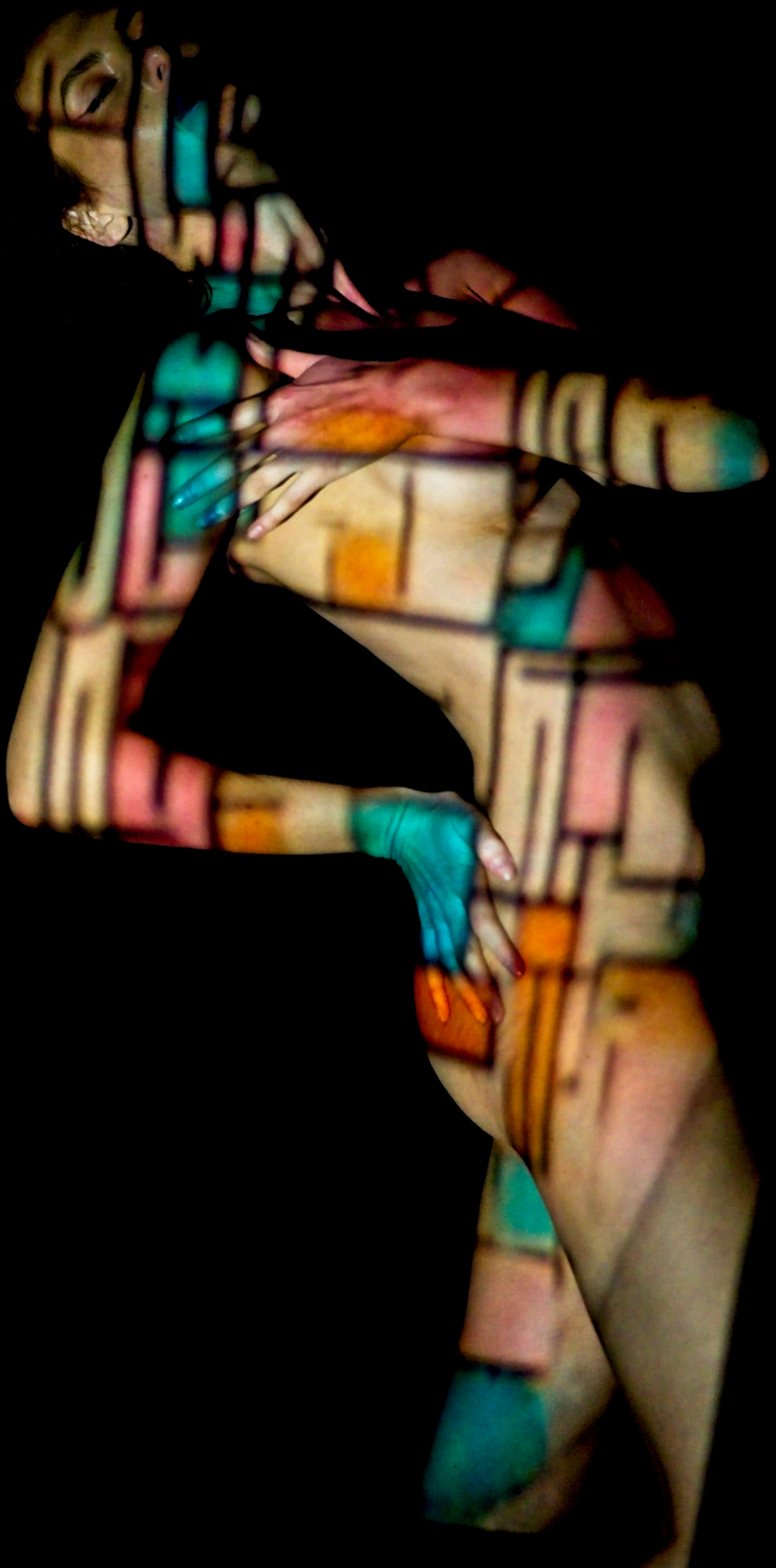


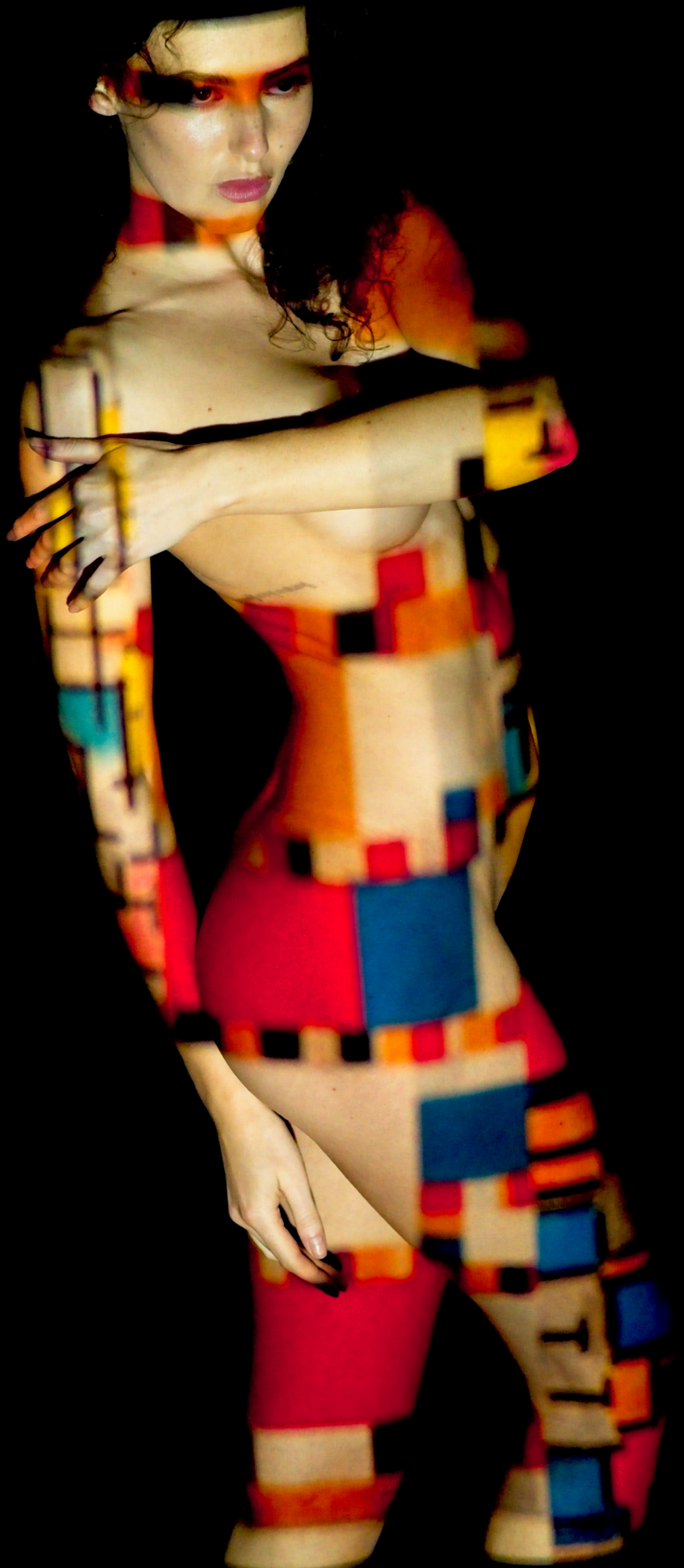




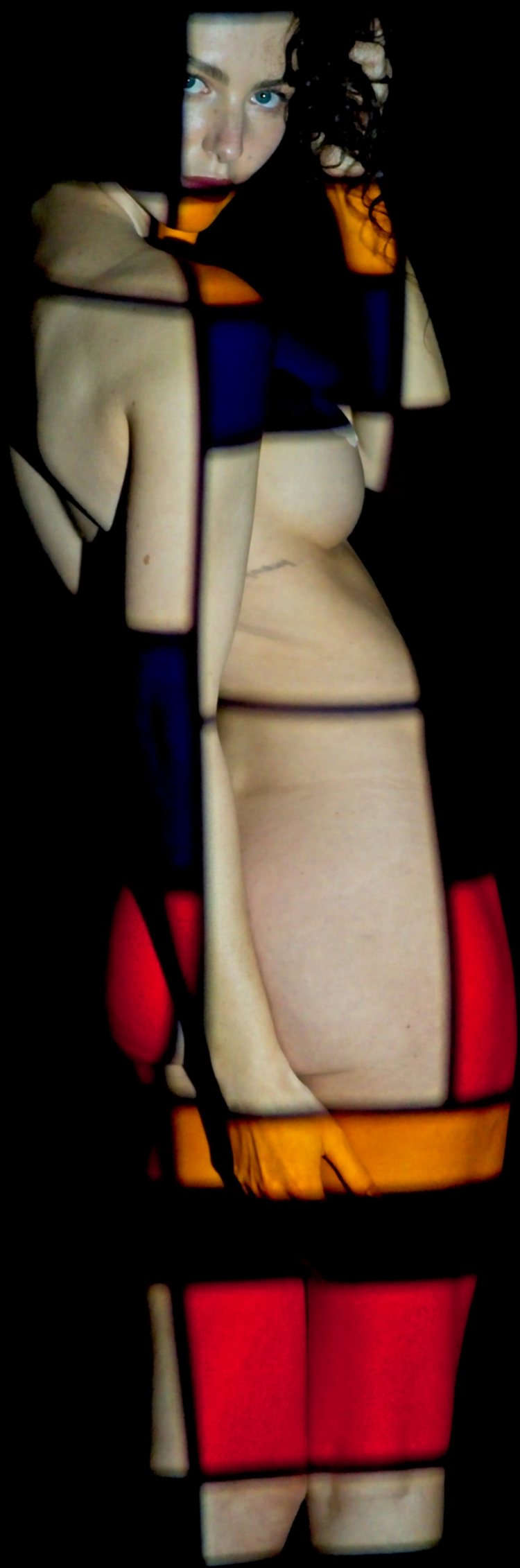










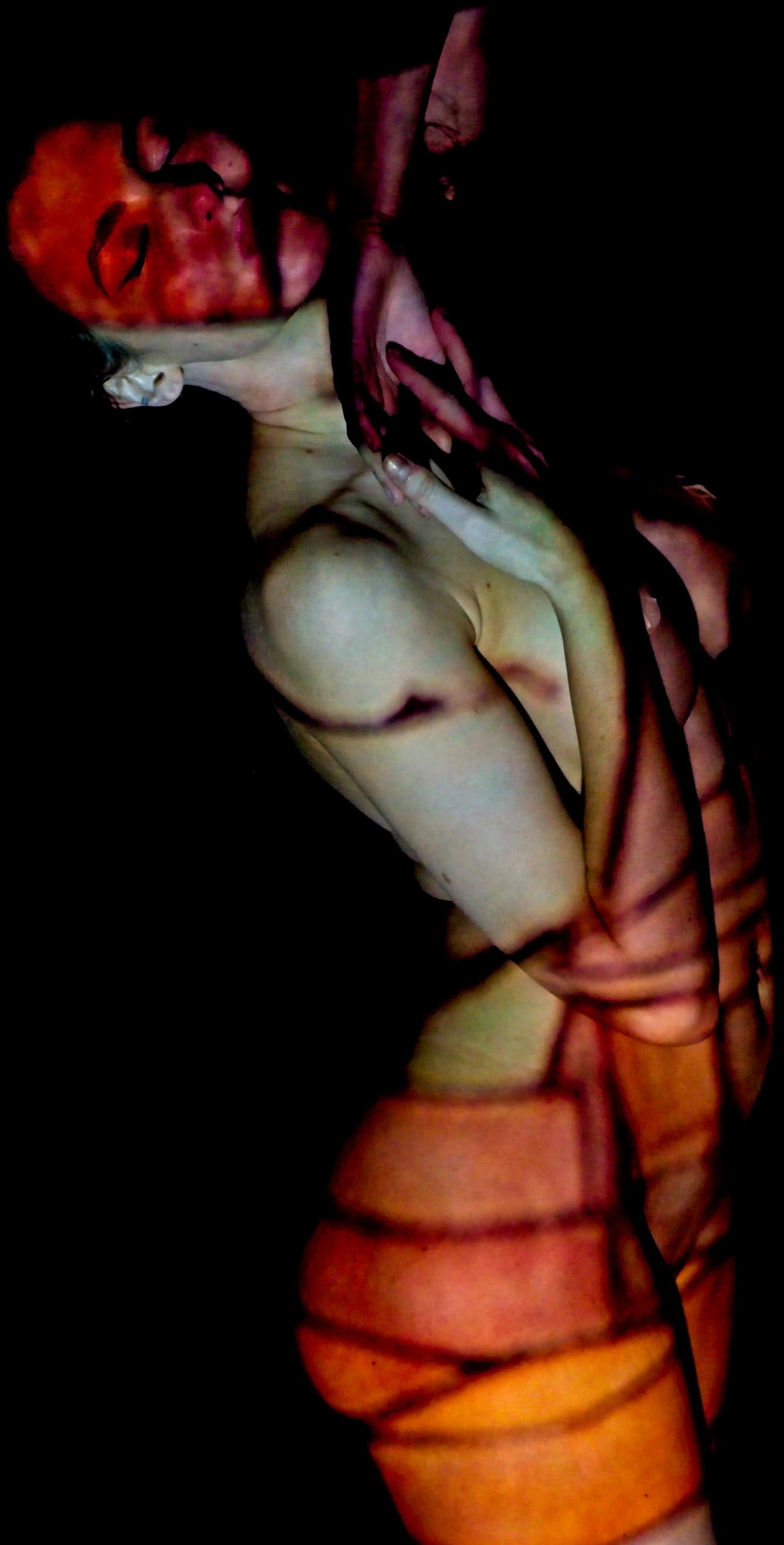






















Projecting Mondrian onto Ashleigh

