

Joiners

Steven Tabor
2021 (c)

Joiners

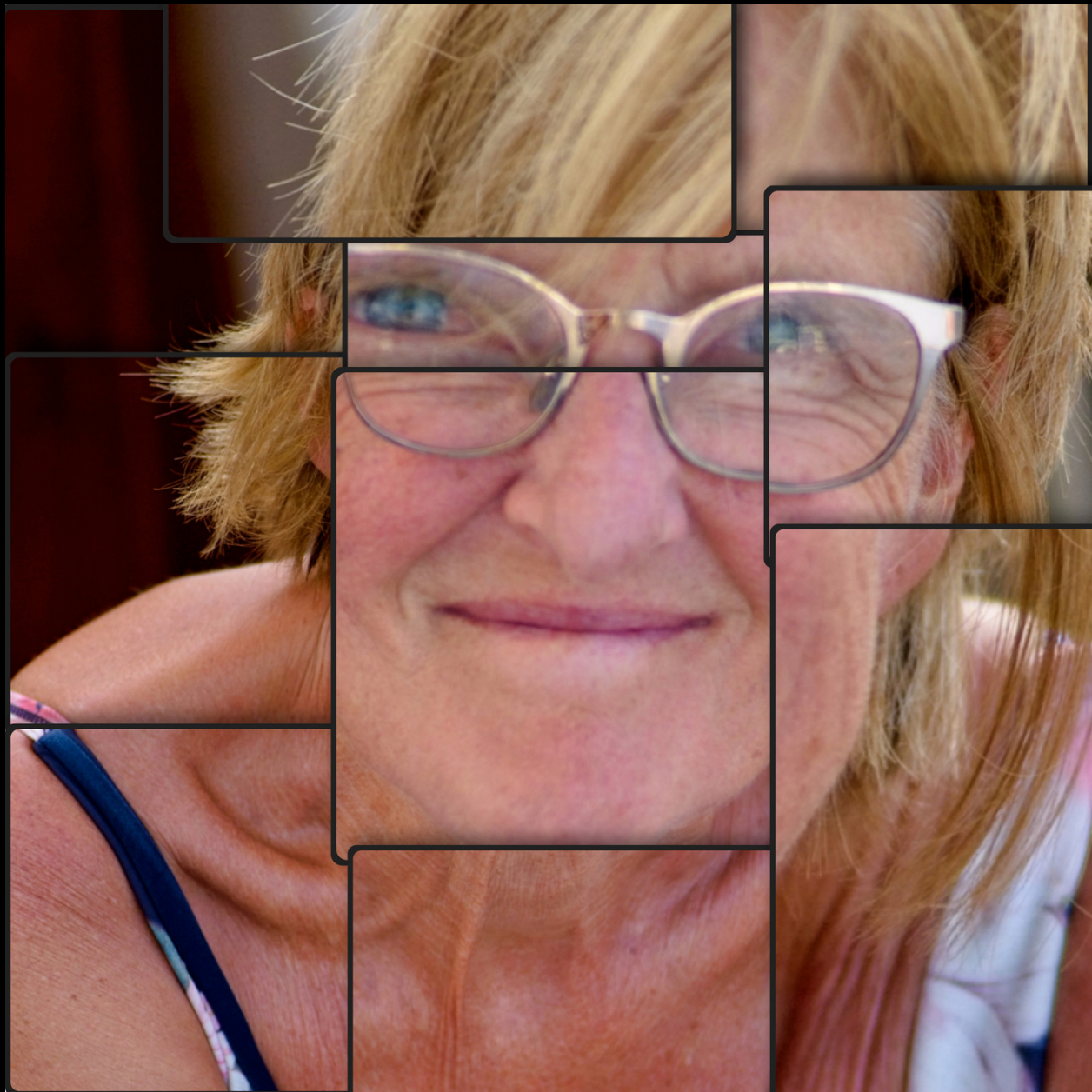
Joiner photography involves the combination of two or more images of a single scene to create a larger image. Joiner photos portray a subject from multiple perspectives by emphasizing their context, shape, narrative, time frame, or style.

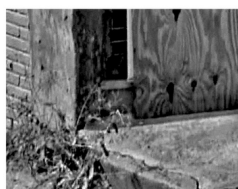
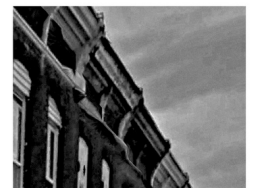
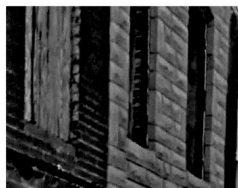
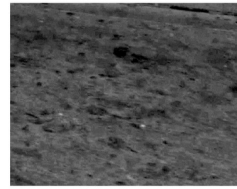
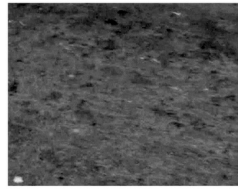
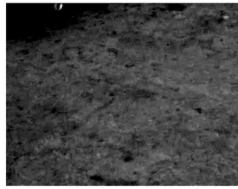
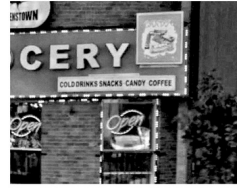
In the early 1980s, English painter David Hockney began creating intricate photo collages that he called “joiners”. He joined photos together because he was interested in how we see and depict space and time. He was particularly interested in how we turn a 3-dimensional world into a 2-dimensional image, and how perspective is used in western art.

In this series, a number of photographs are split, multiplied, modified, and then joined together to emphasize different aspects of the subject. Grids are used to display the joined photographs, with the individual cells representing the building blocks of the image.

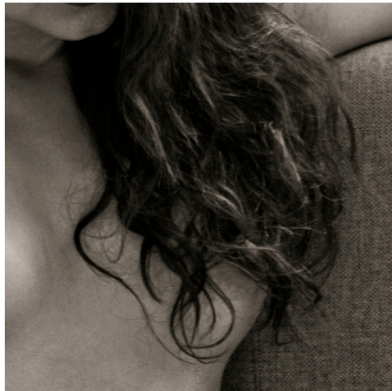
In reality, we likely observe parts of an image from different perspectives---the building blocks-- and then join these together to form a mental picture of what it is that we have seen. Sometimes we observe these building blocks clearly, and at other times, we don't. How we join the building blocks together involves choices of perspective and the methods we use to translate a 3-dimensional reality into a 2-dimensional image.



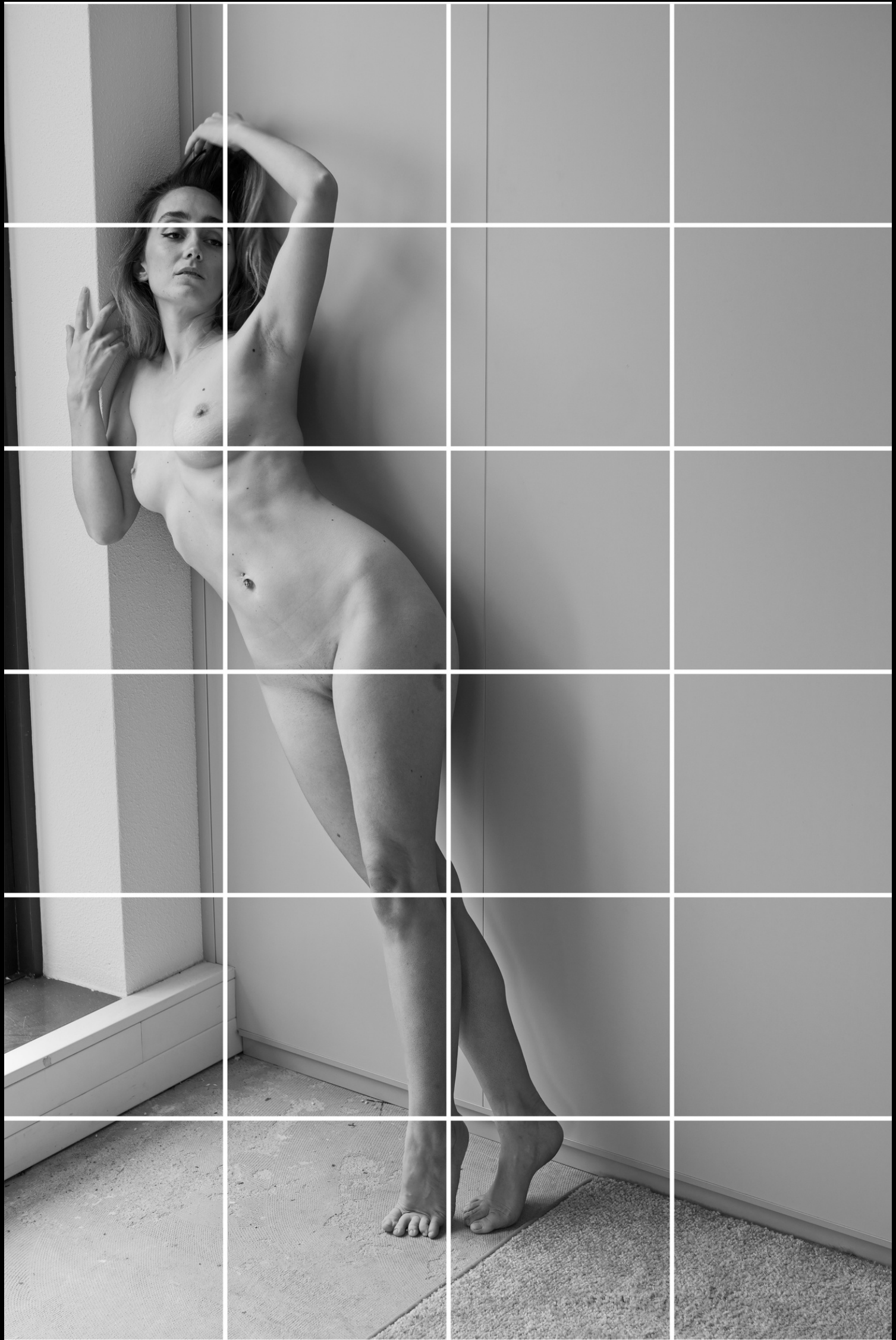


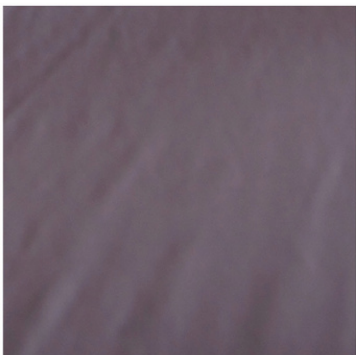
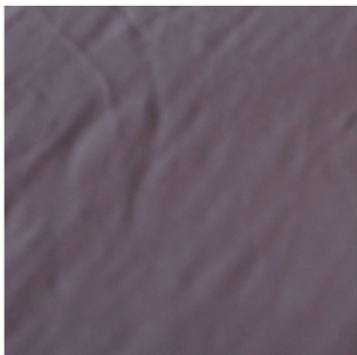
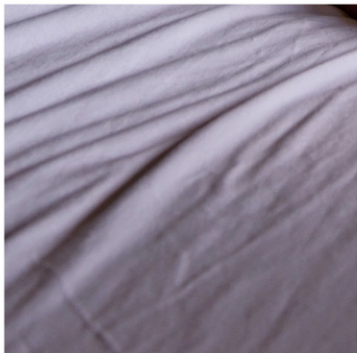
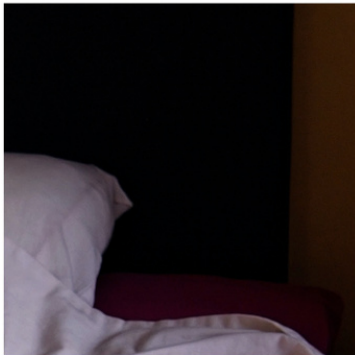
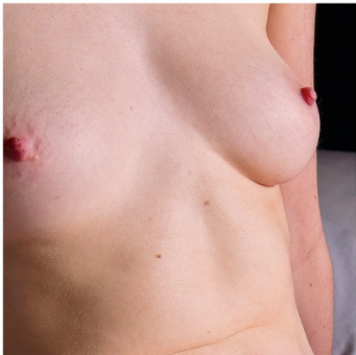
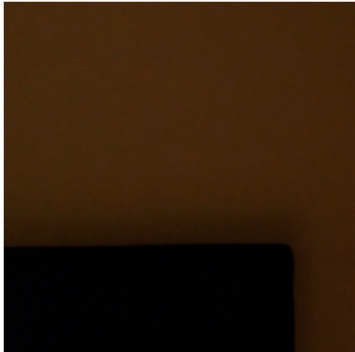
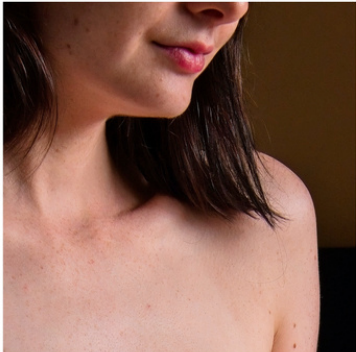
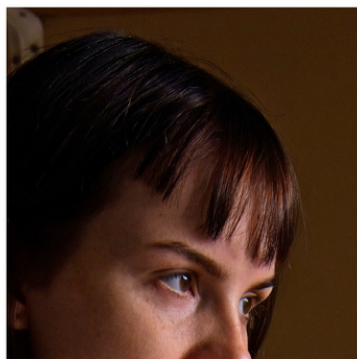
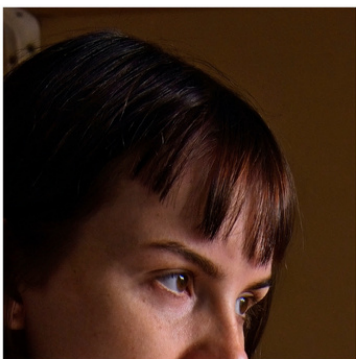




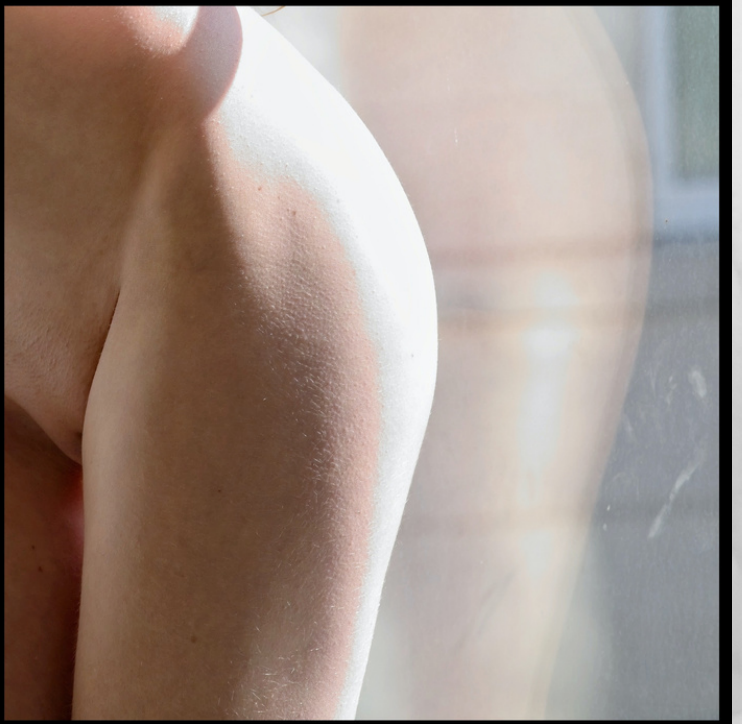


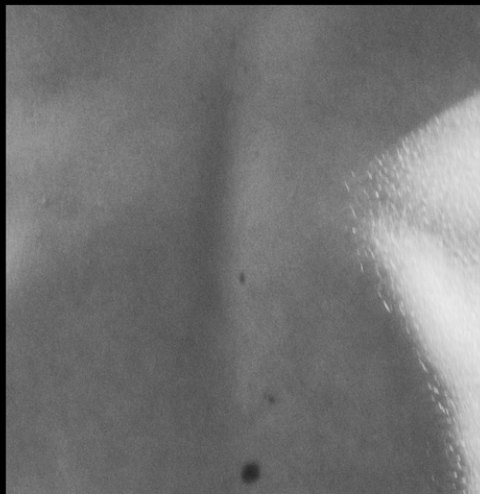
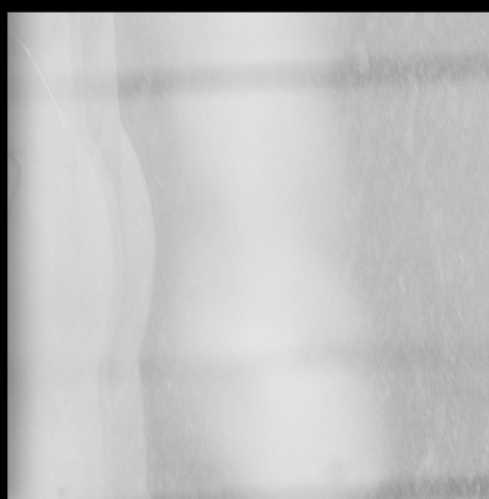


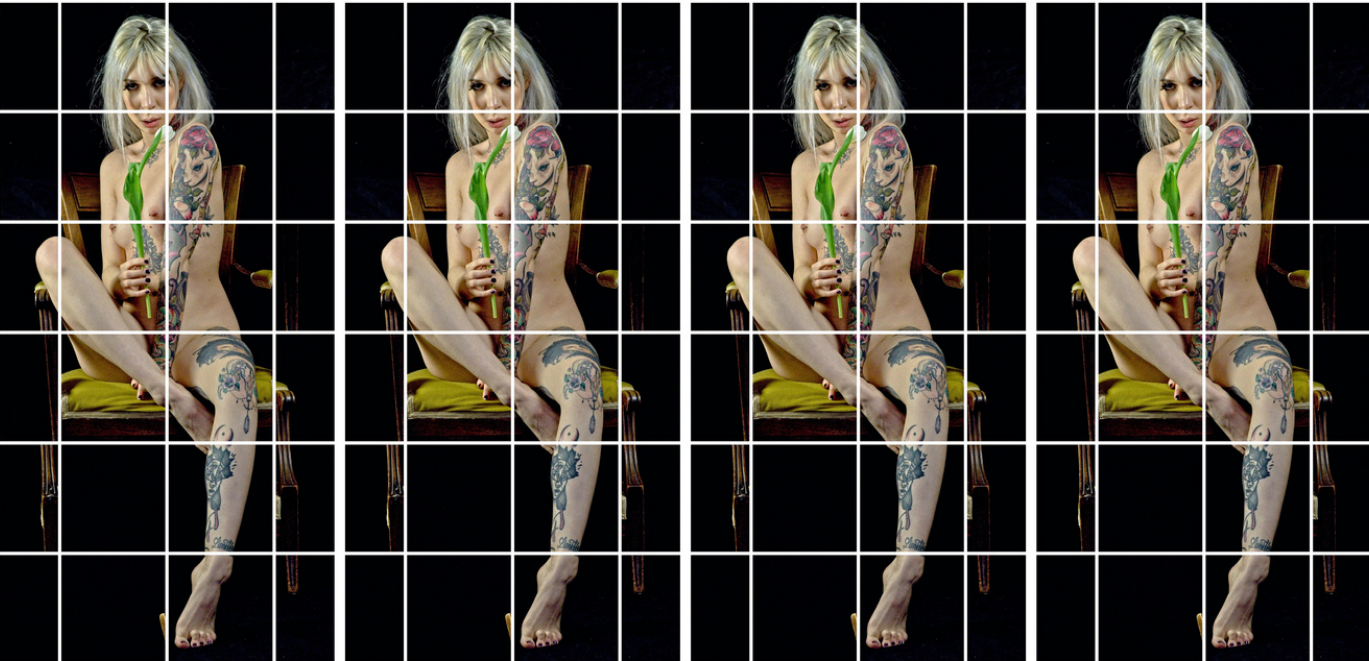
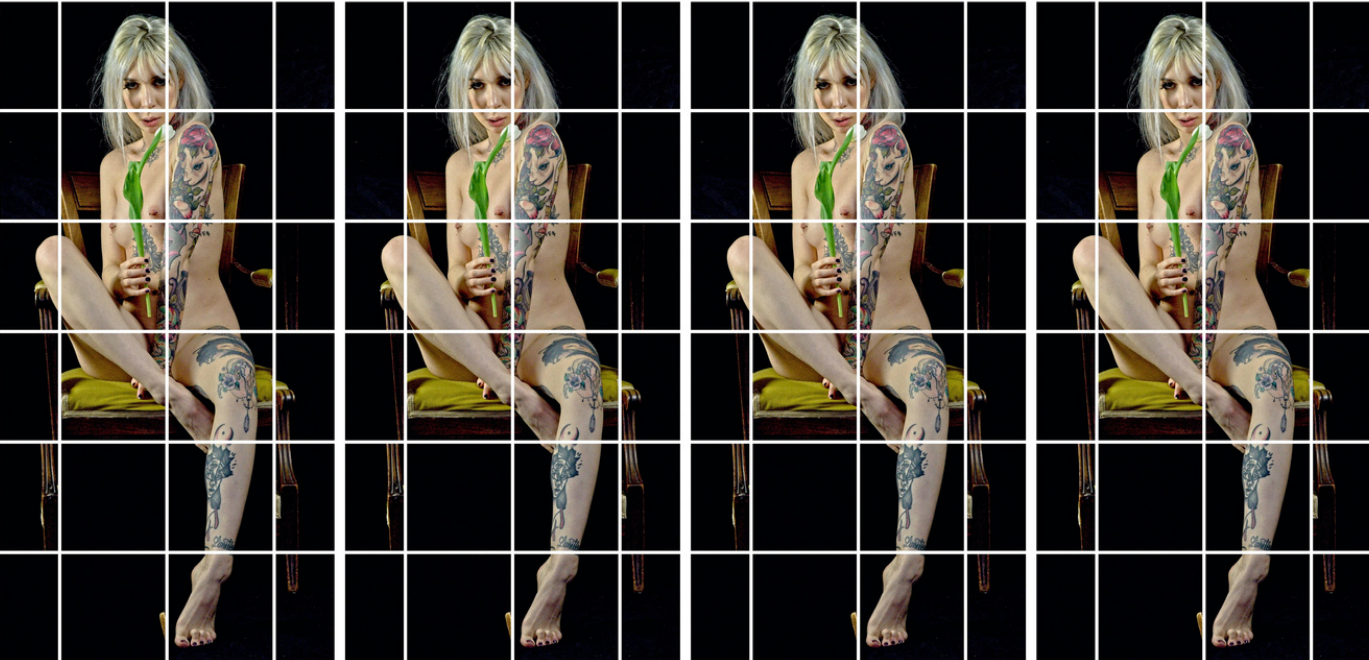






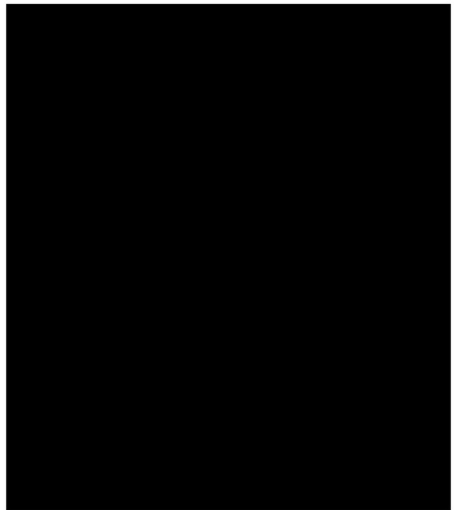
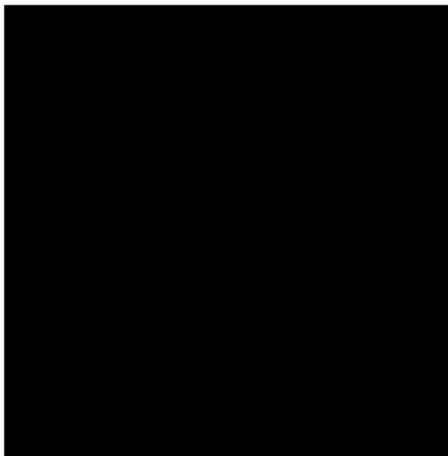
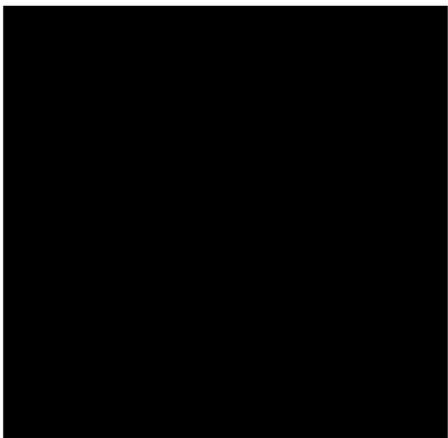
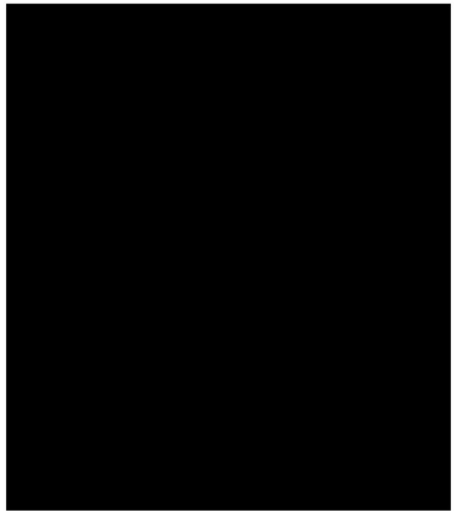
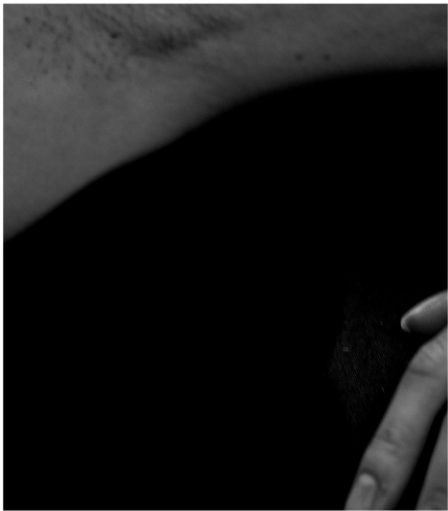
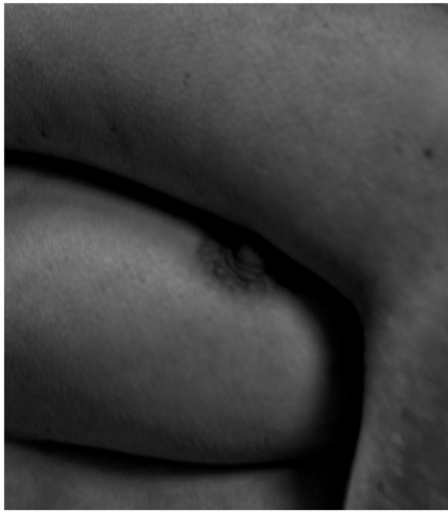
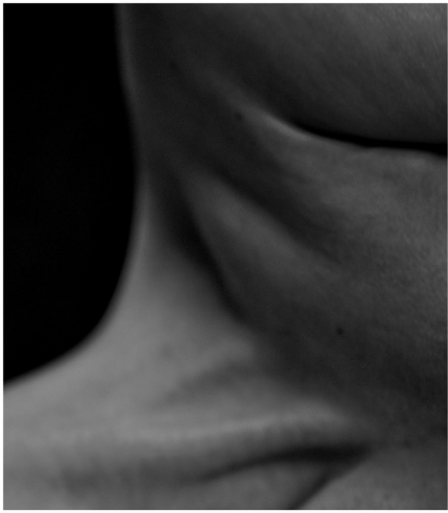


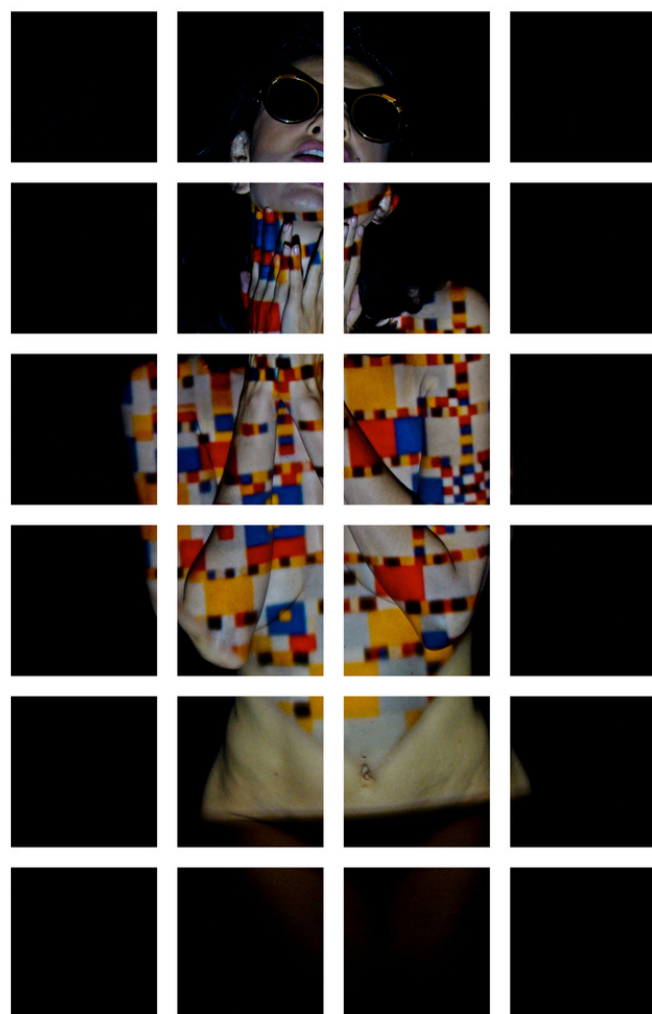
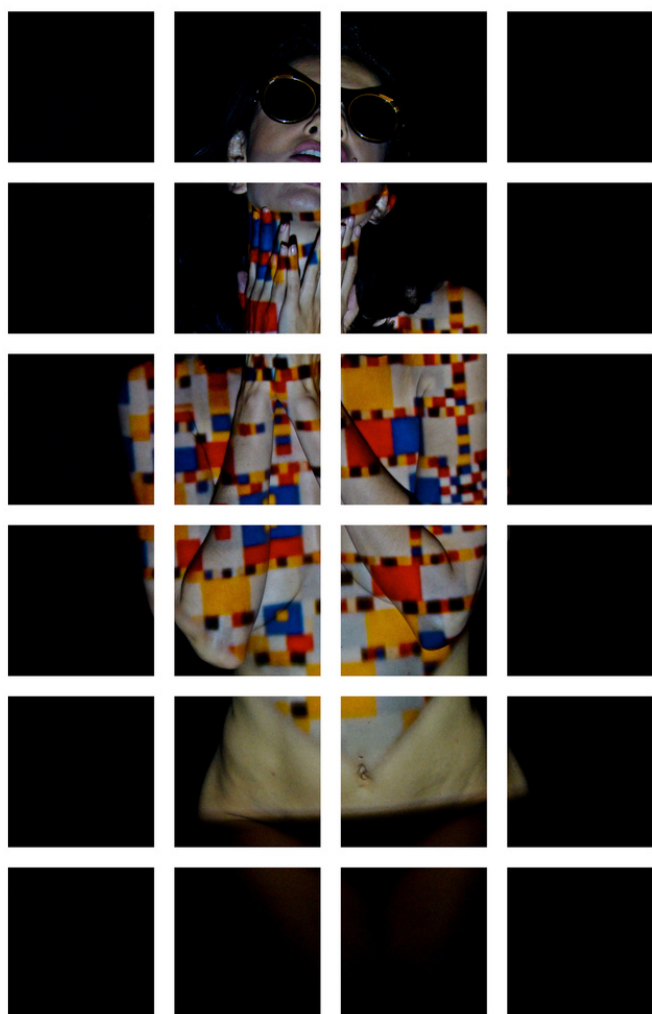
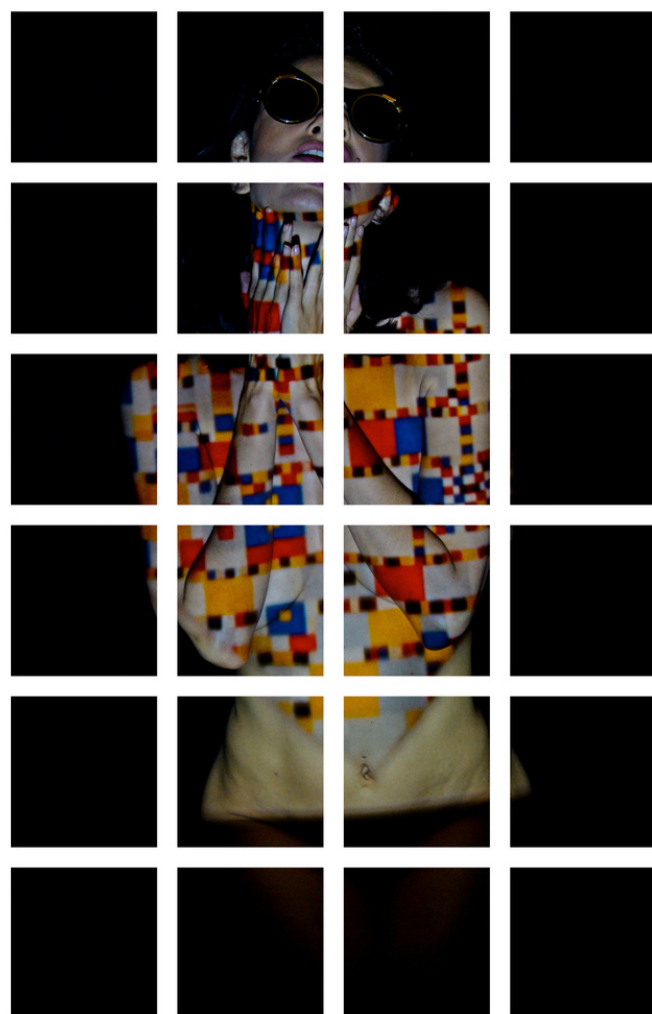
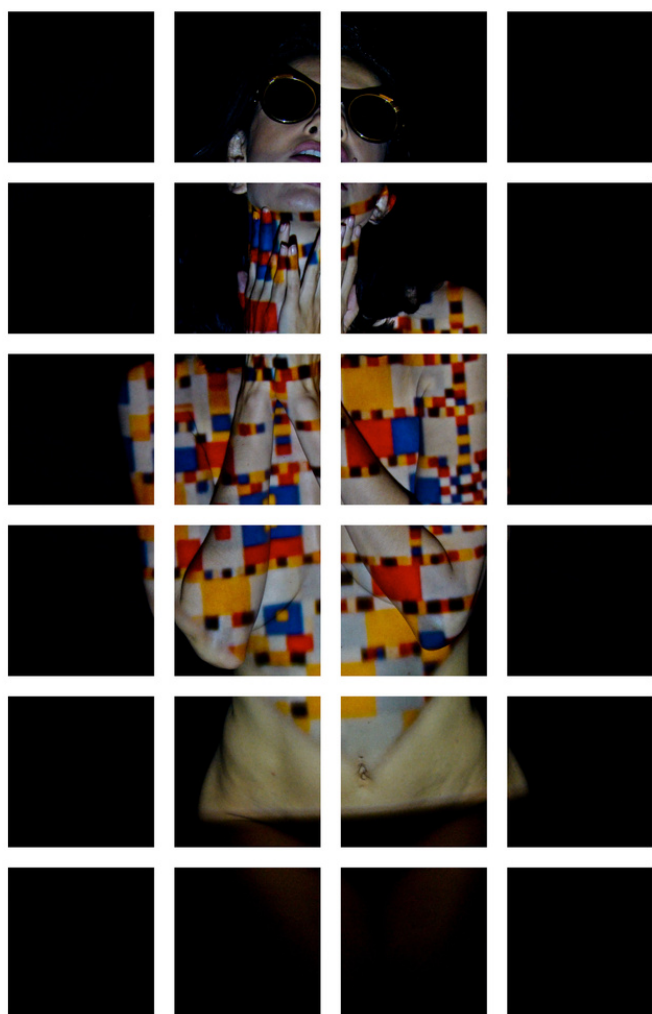


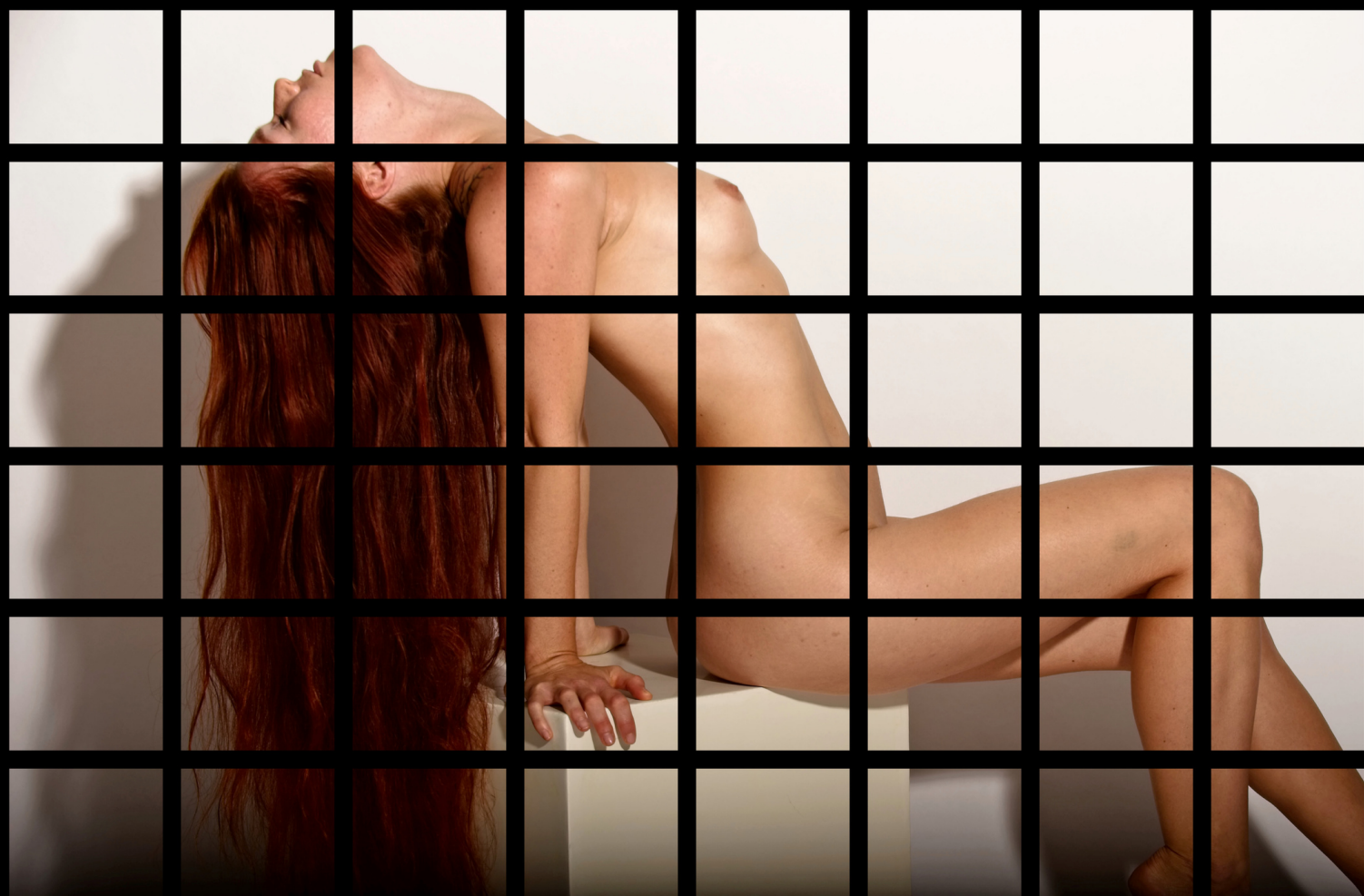
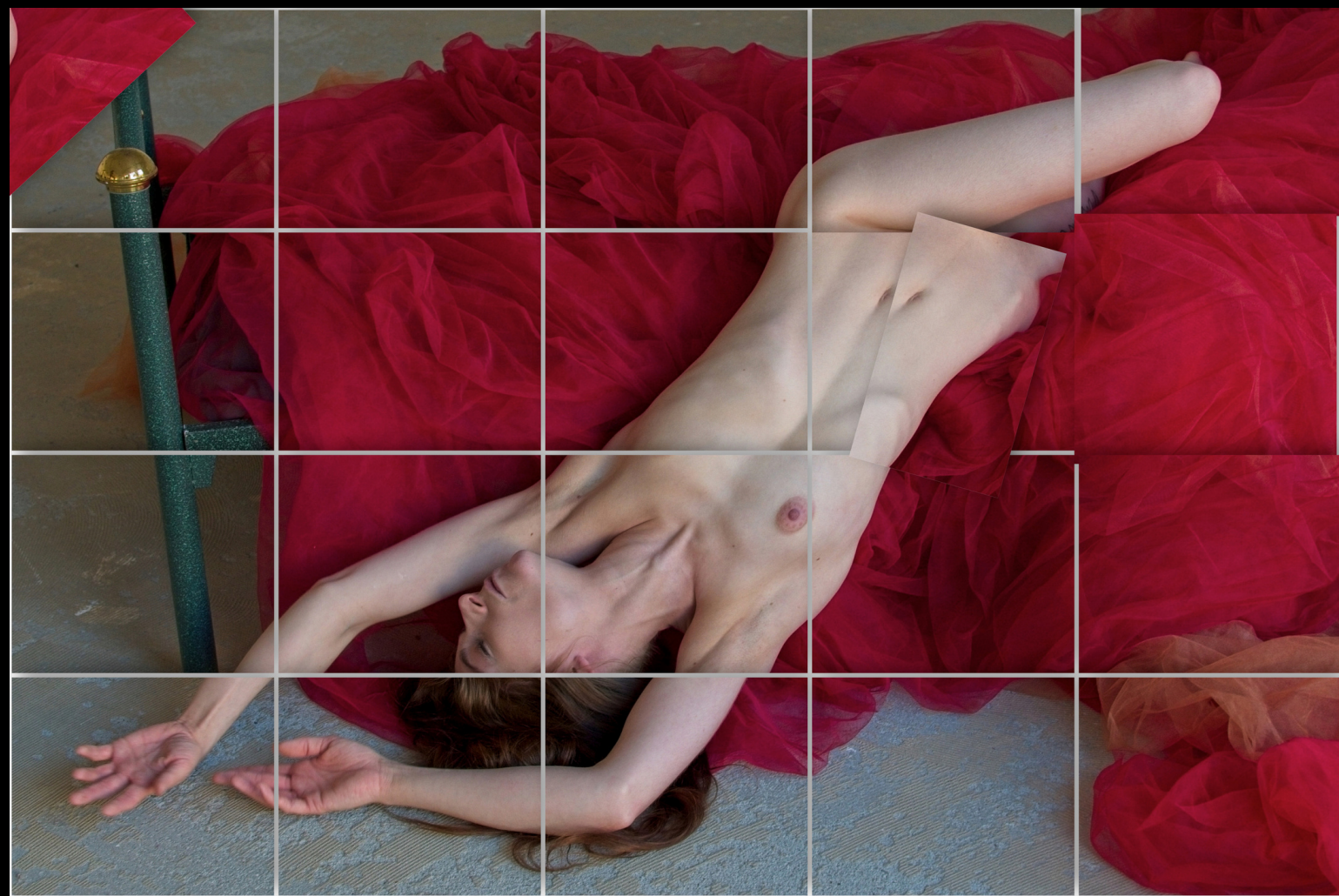


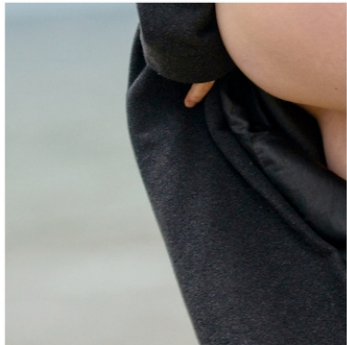
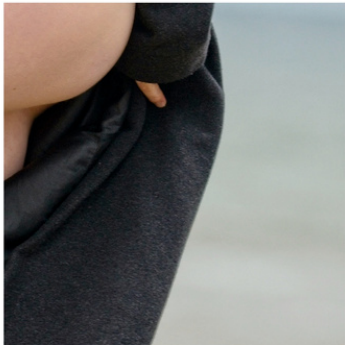
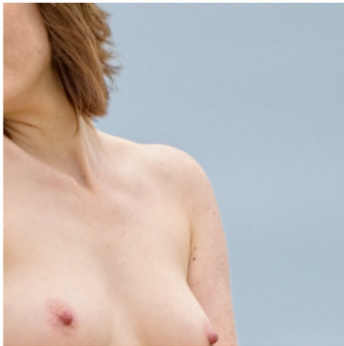
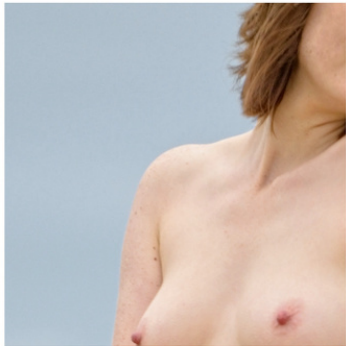
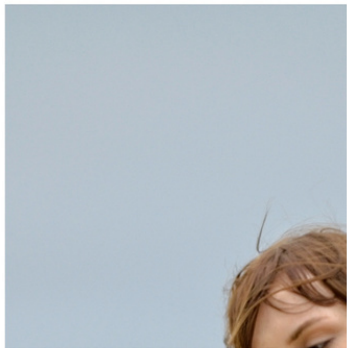
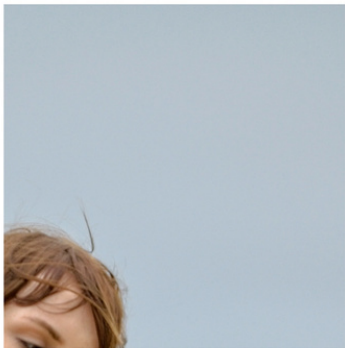




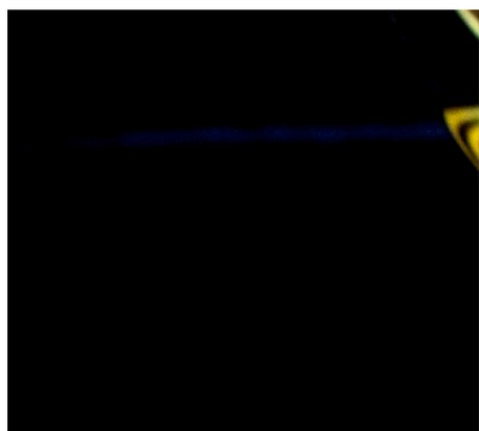
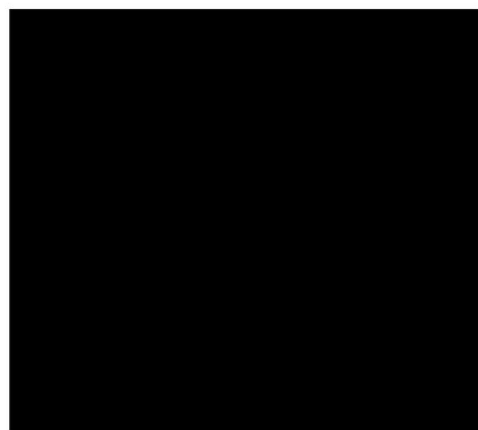
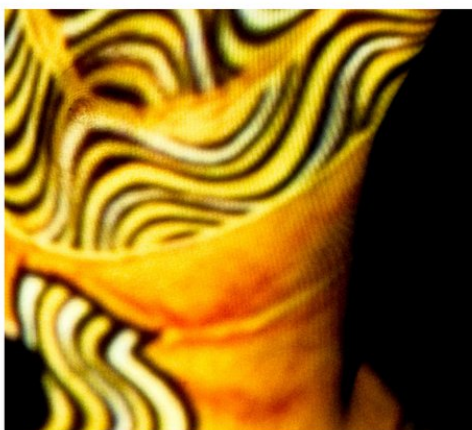
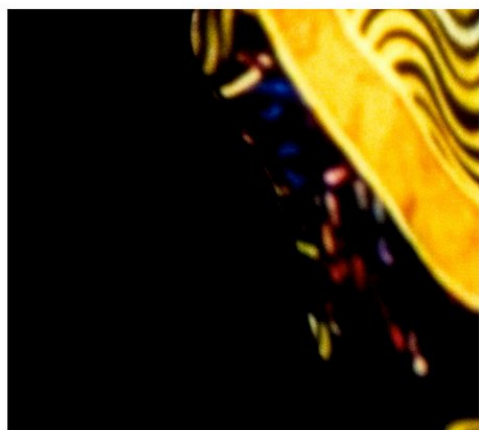
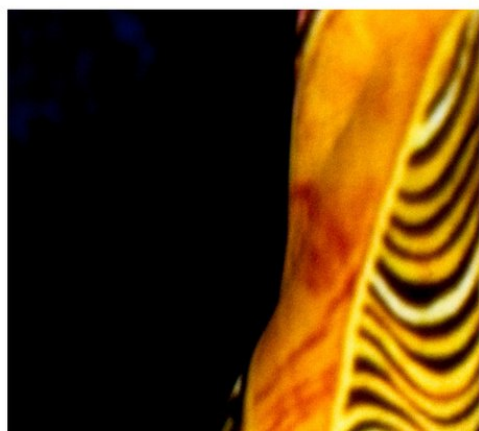
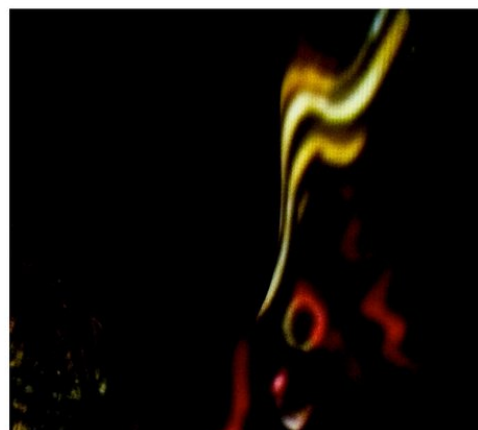
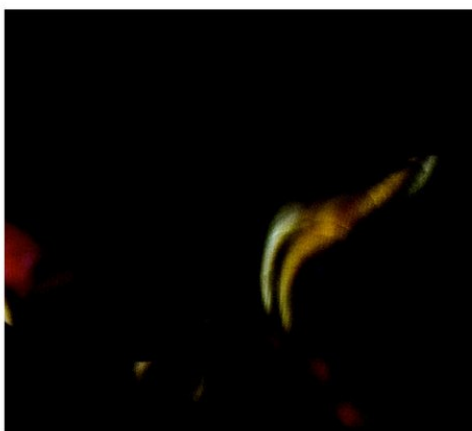


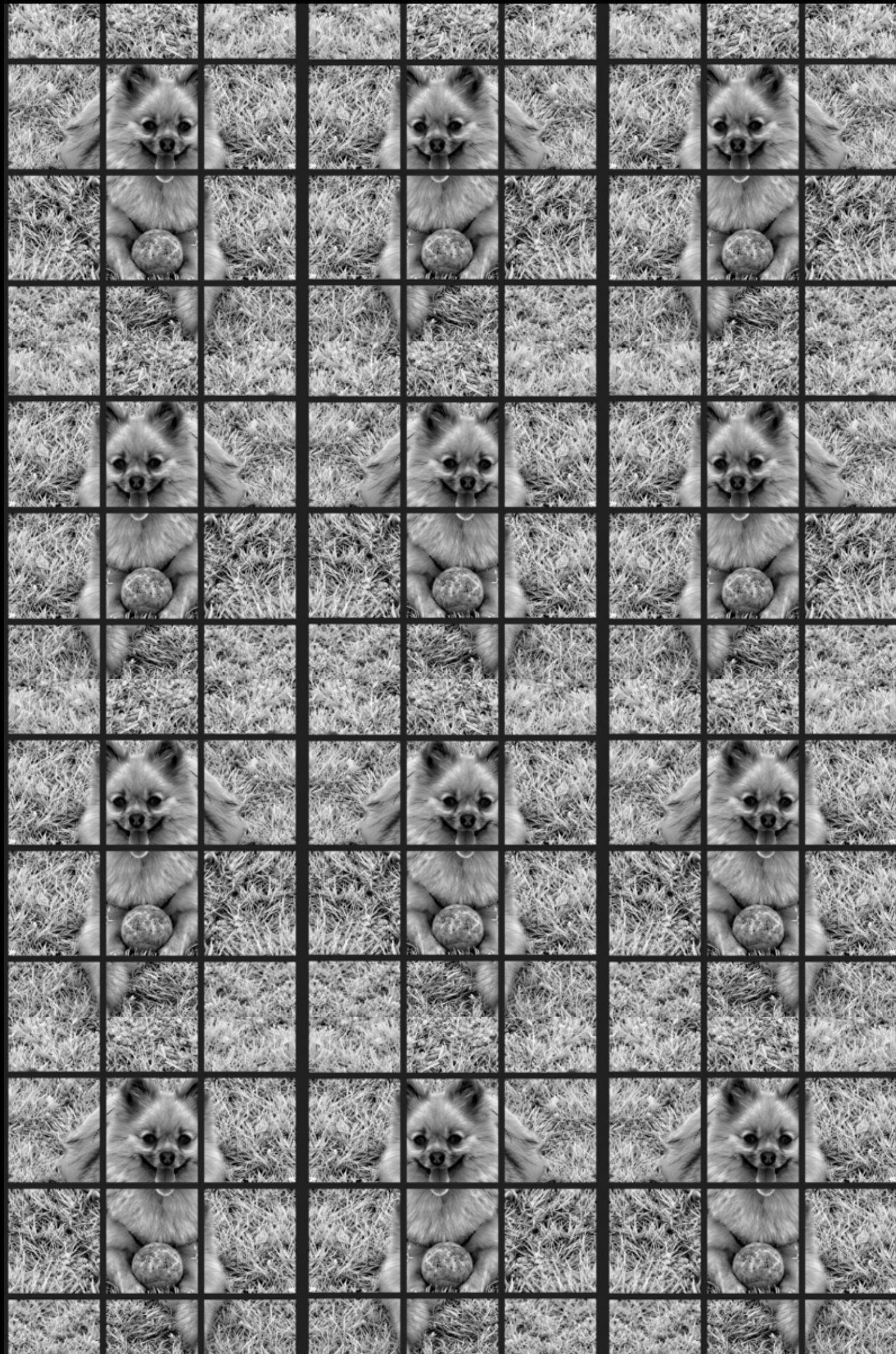




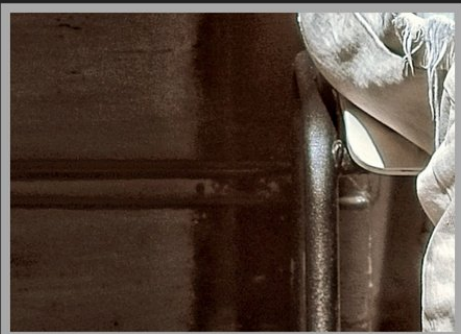


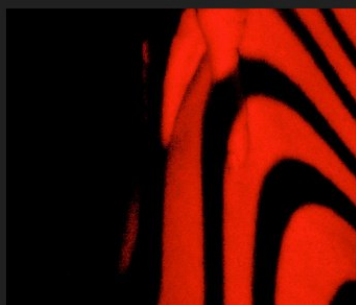
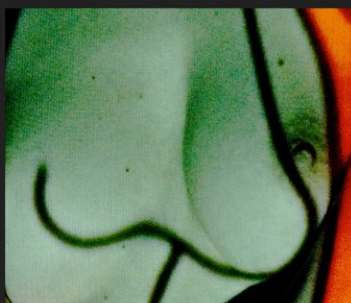
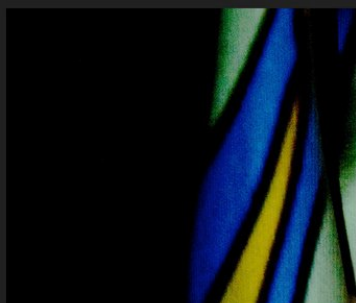


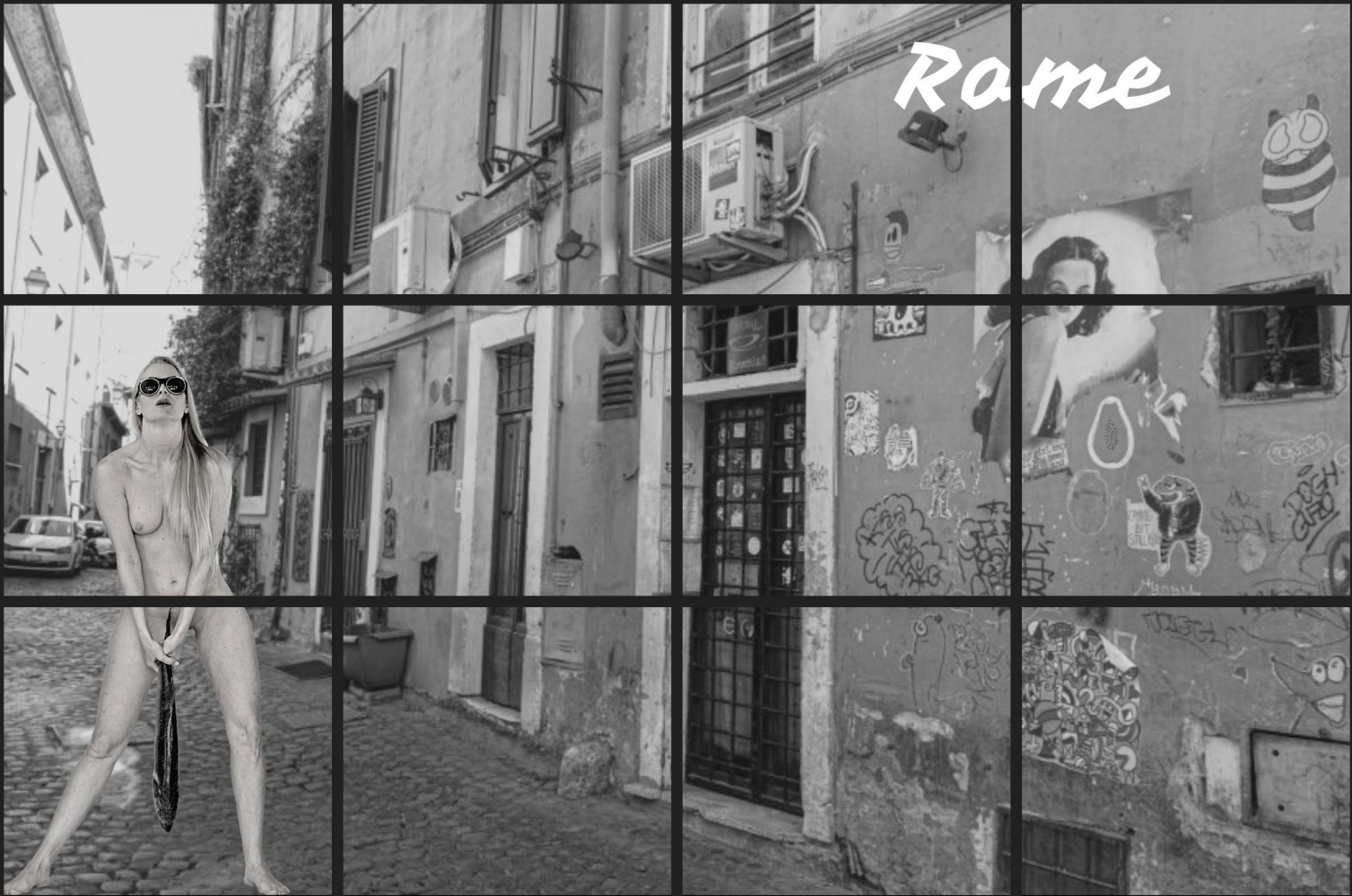






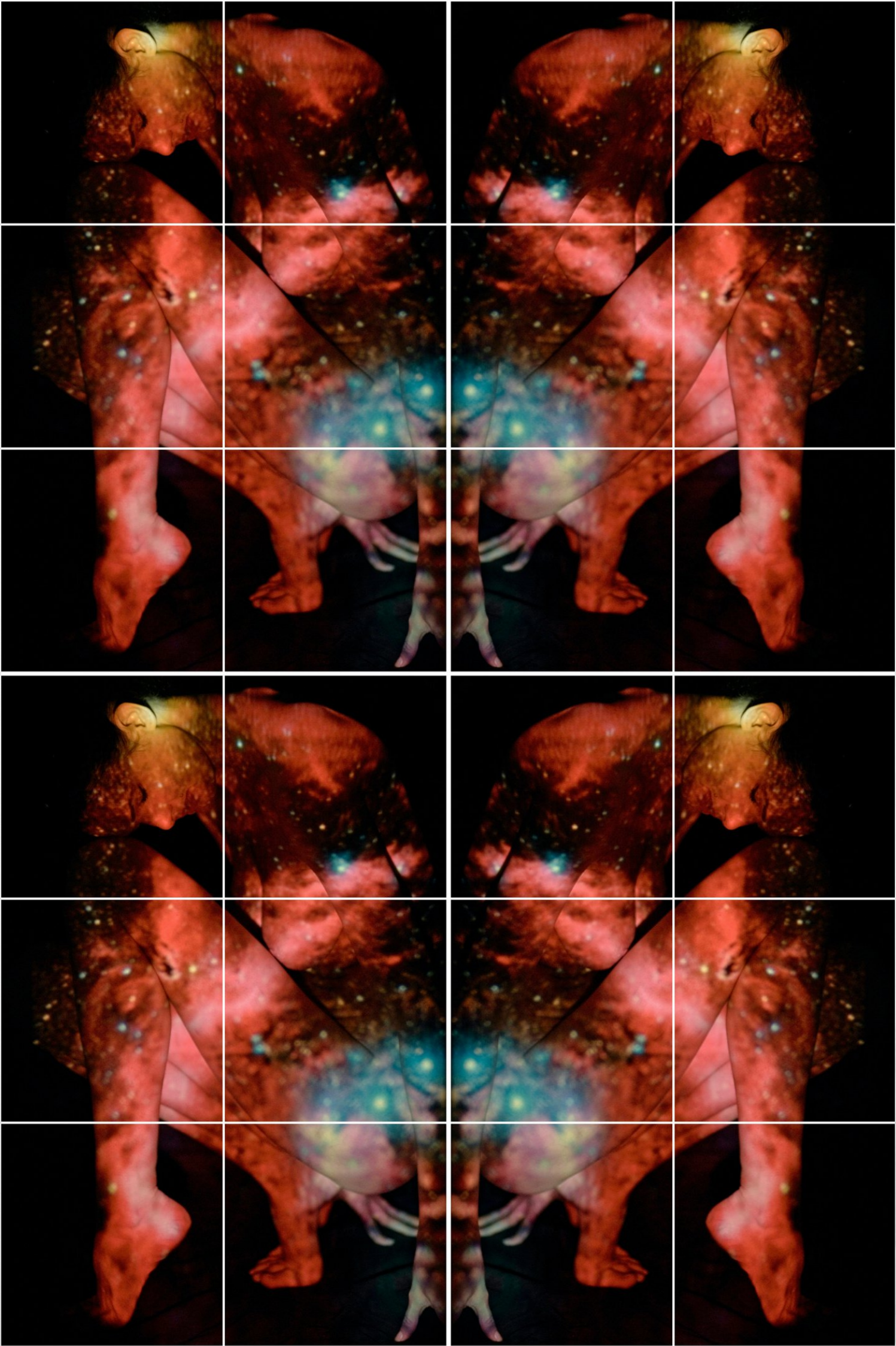


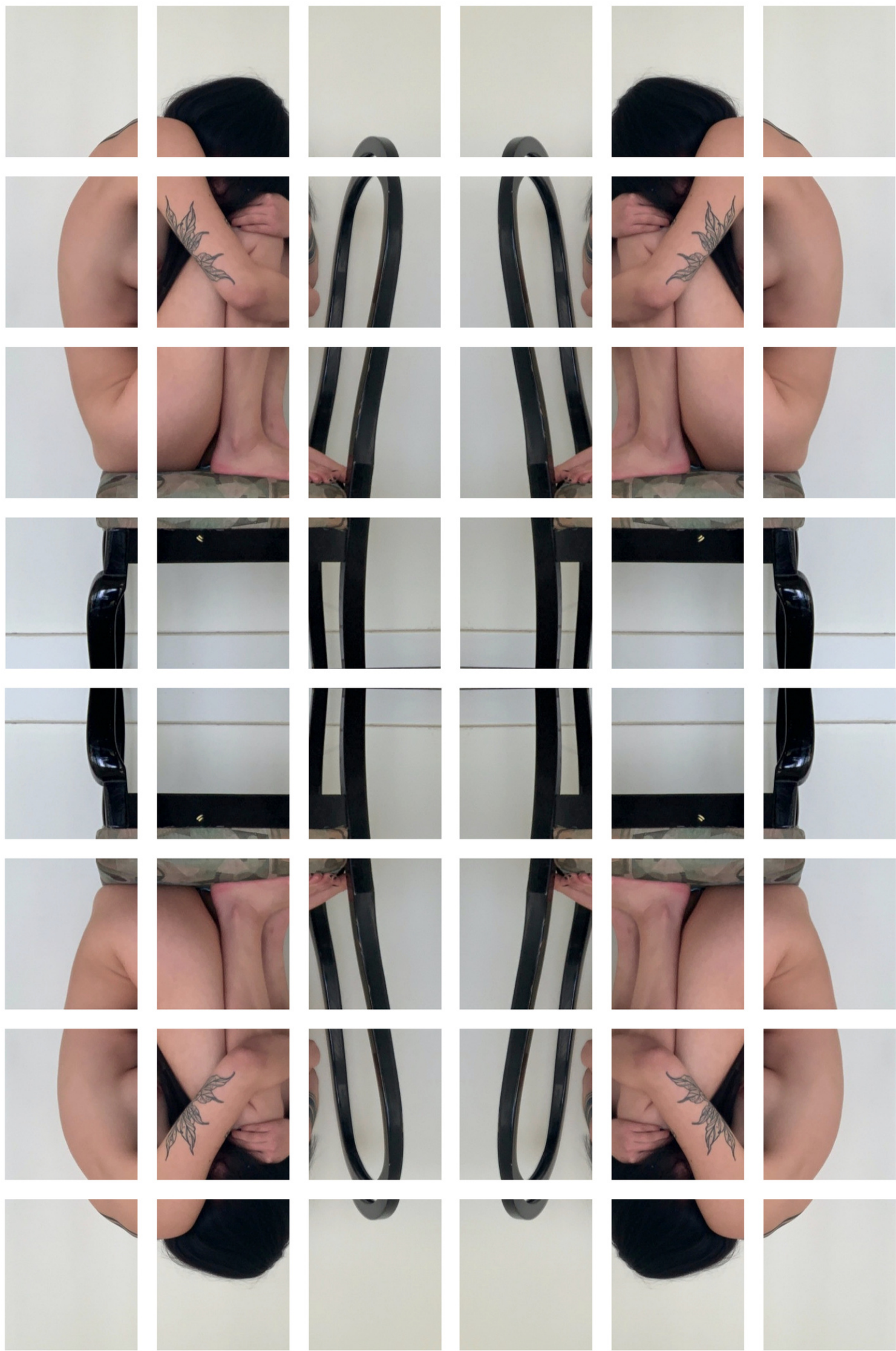


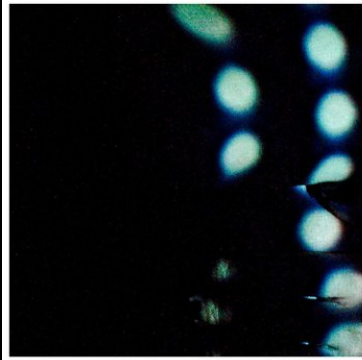
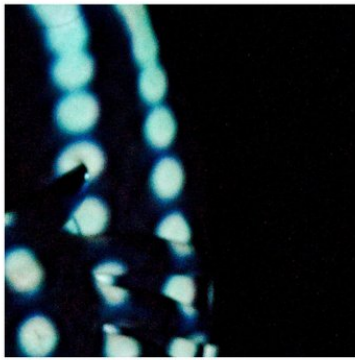
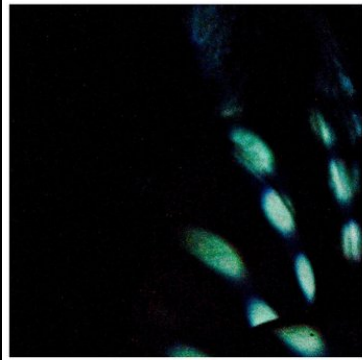
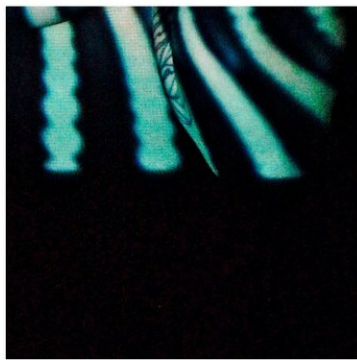
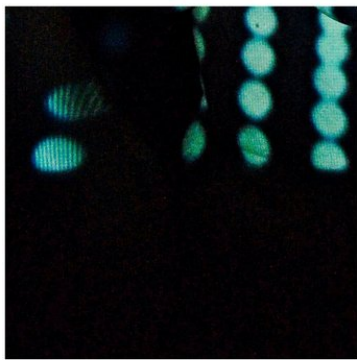
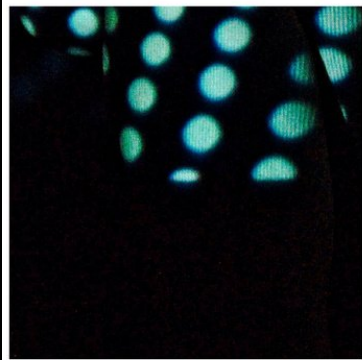
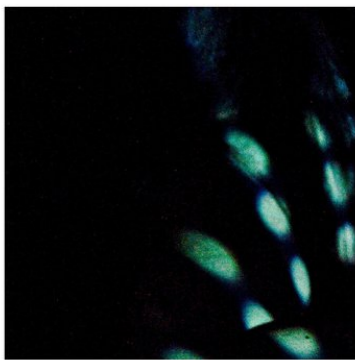
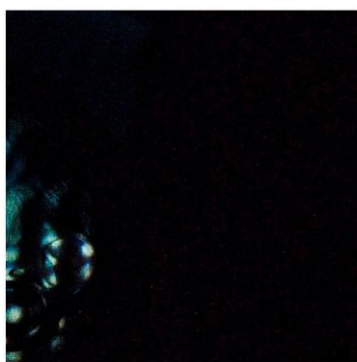
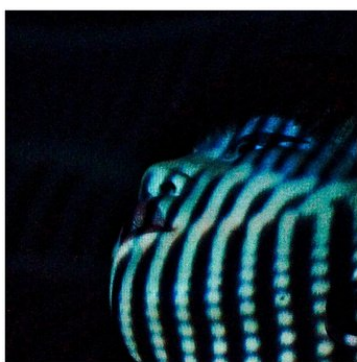
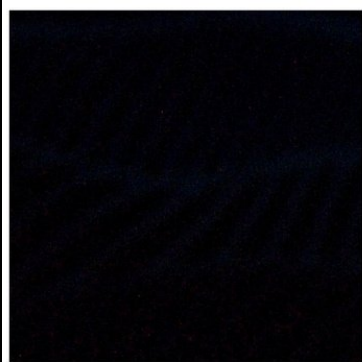






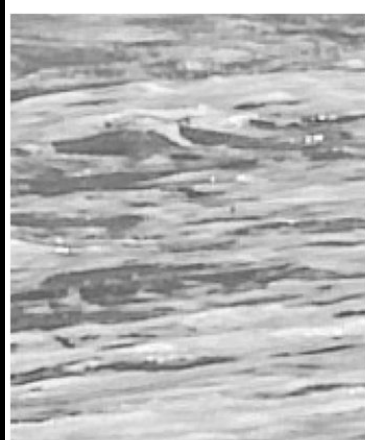
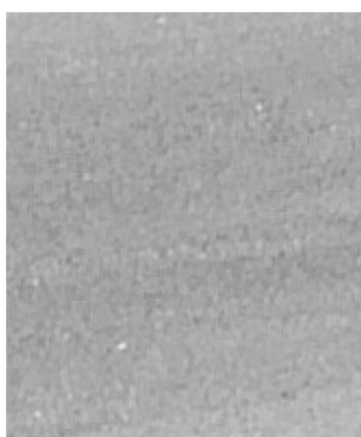
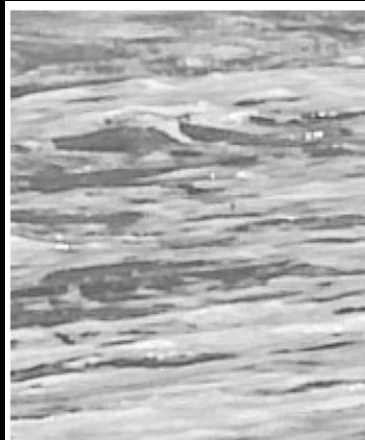


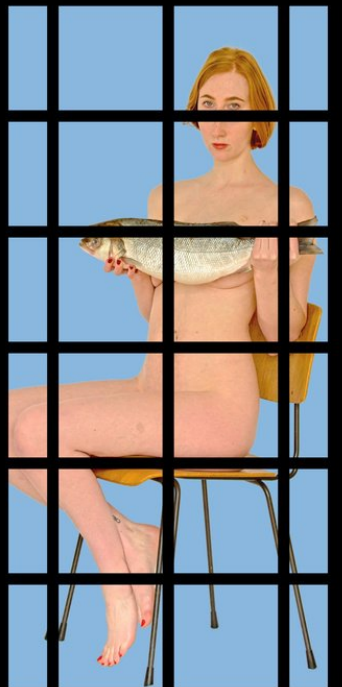
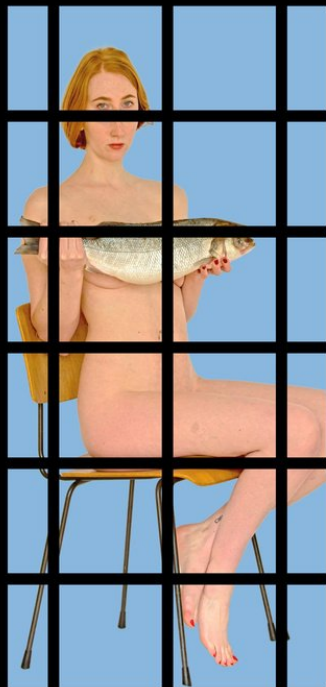
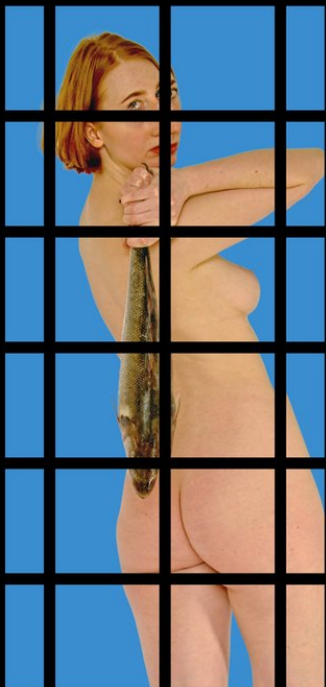
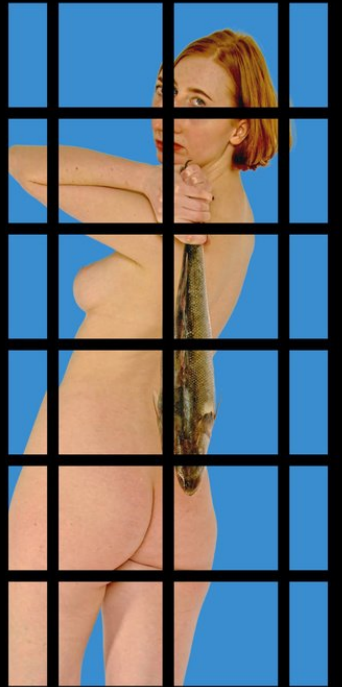
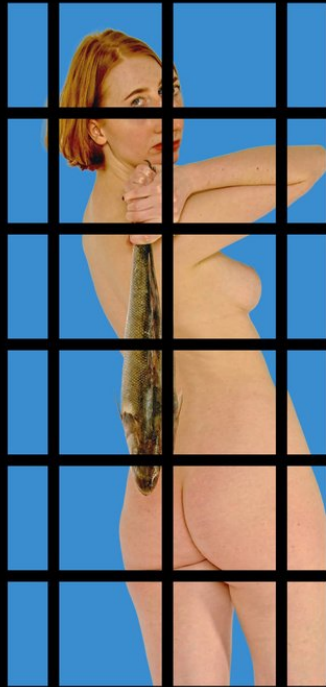
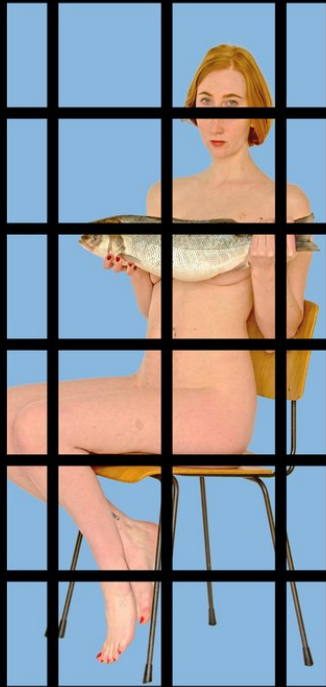
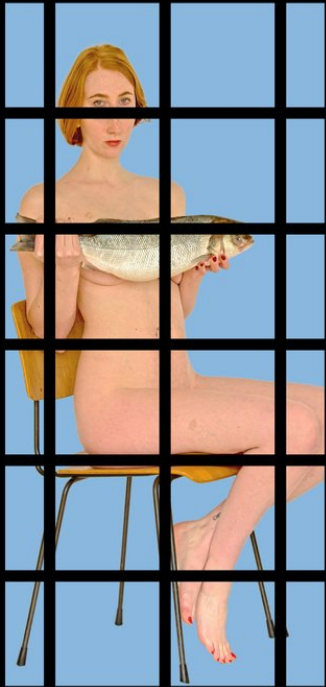
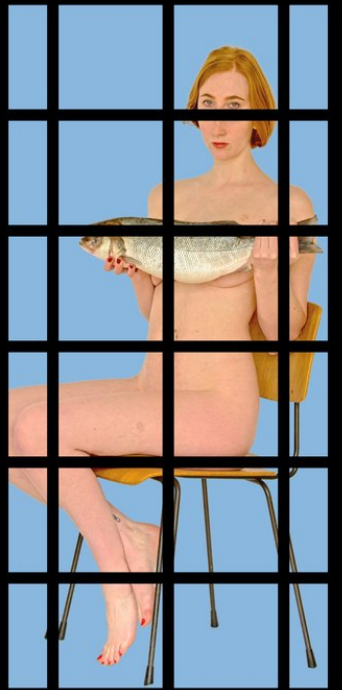
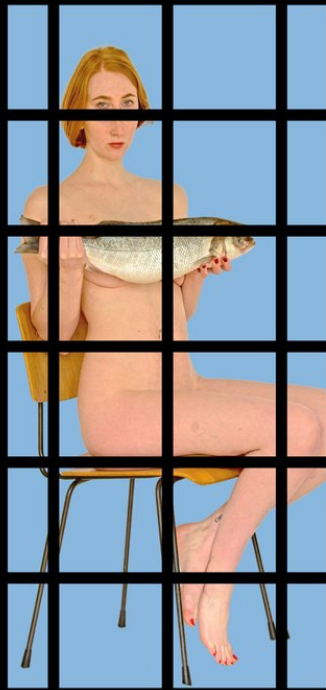
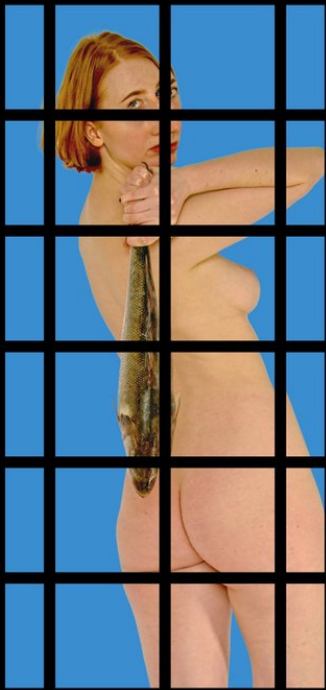


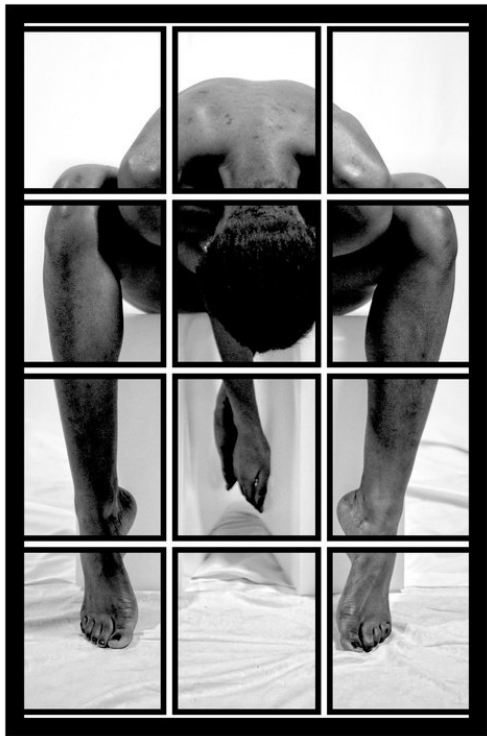
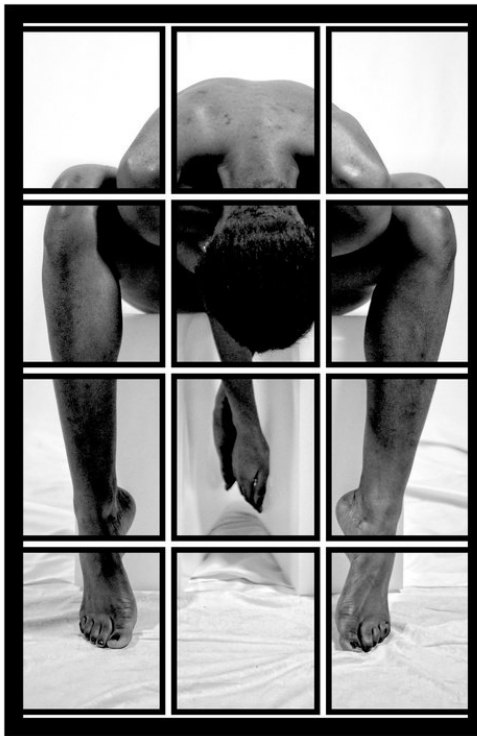
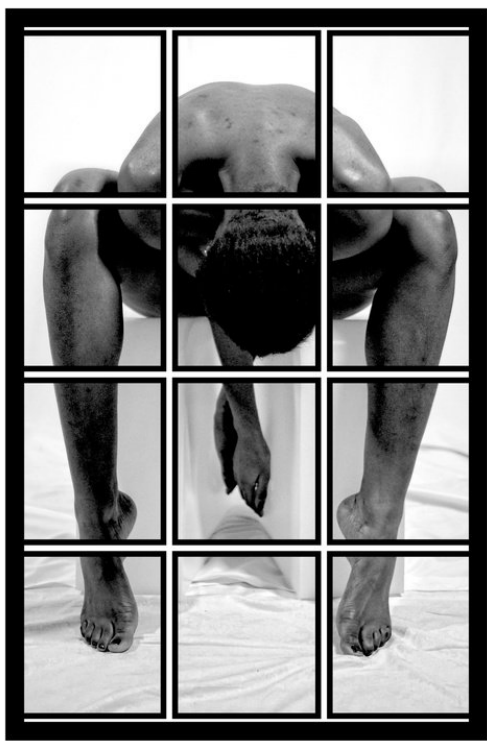




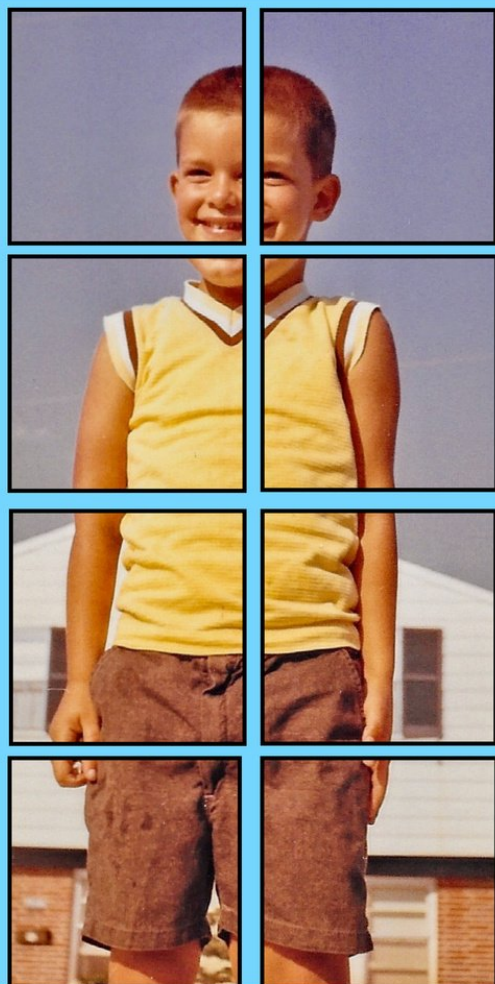
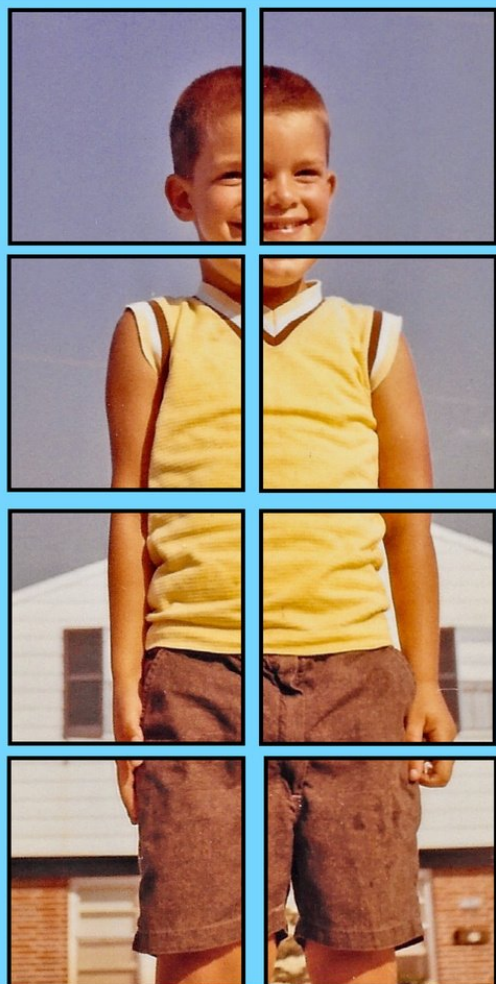
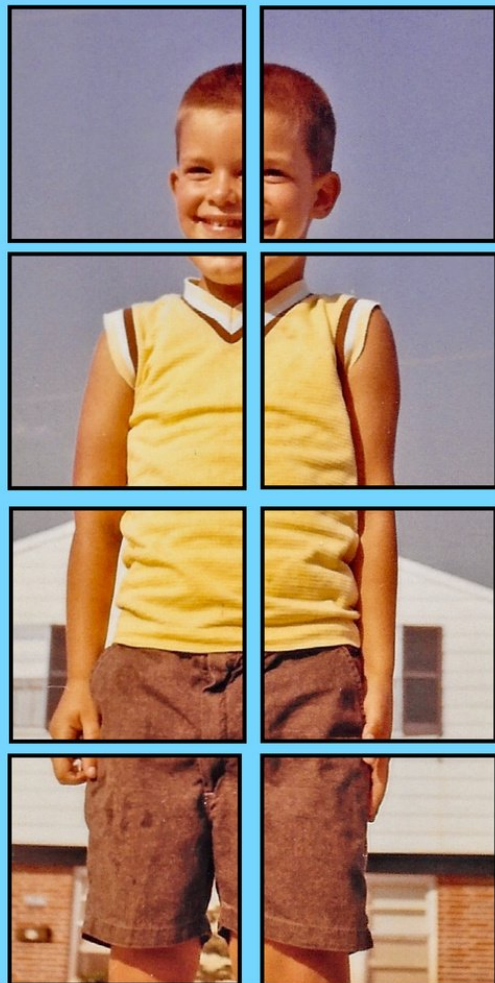




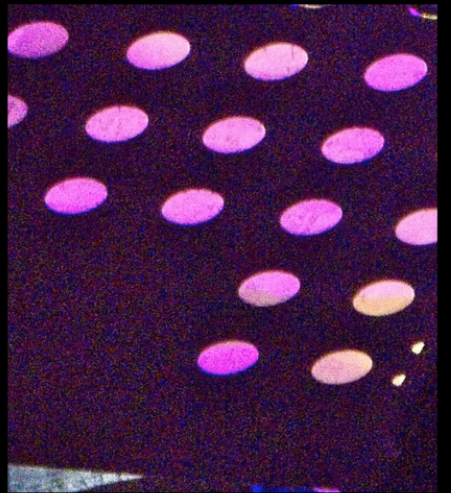
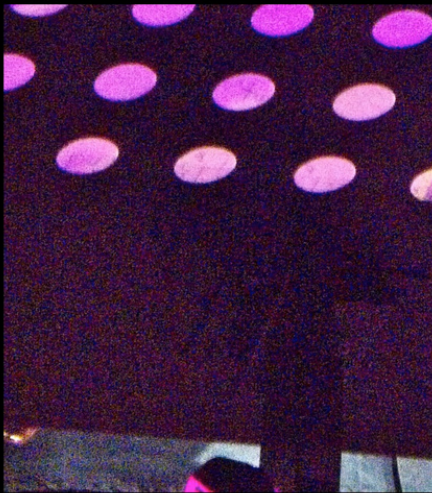
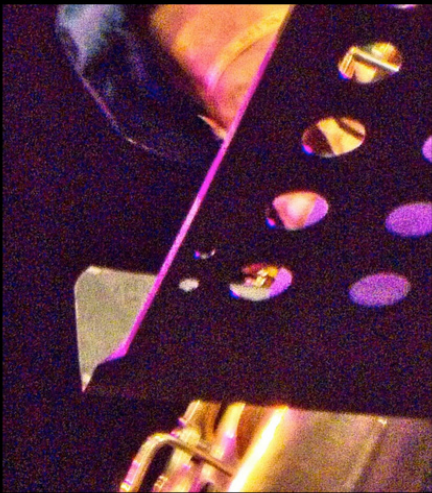
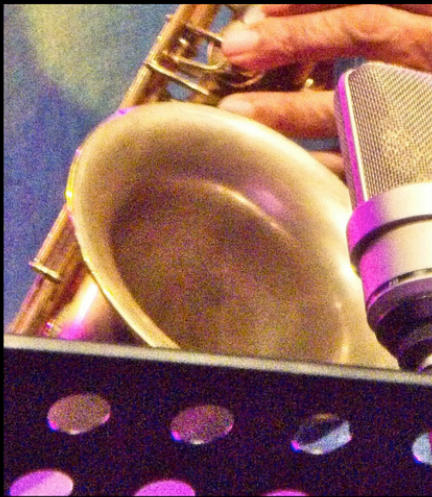
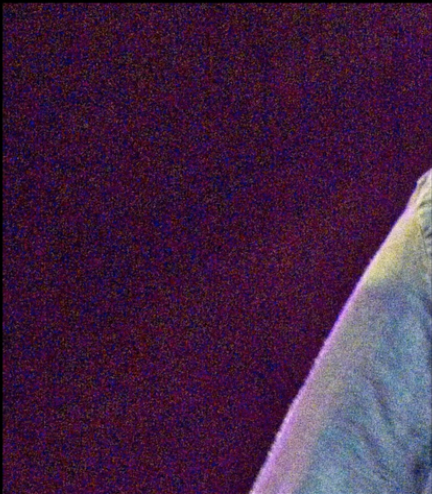
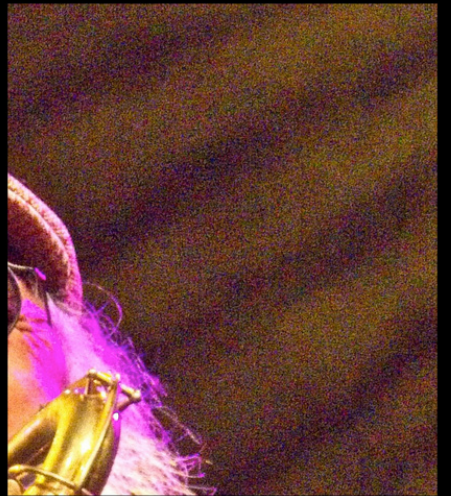
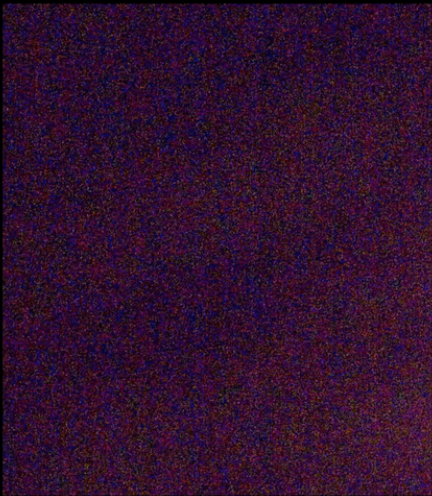


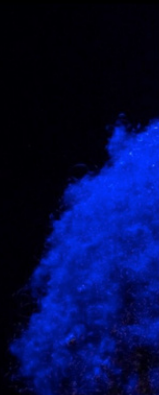




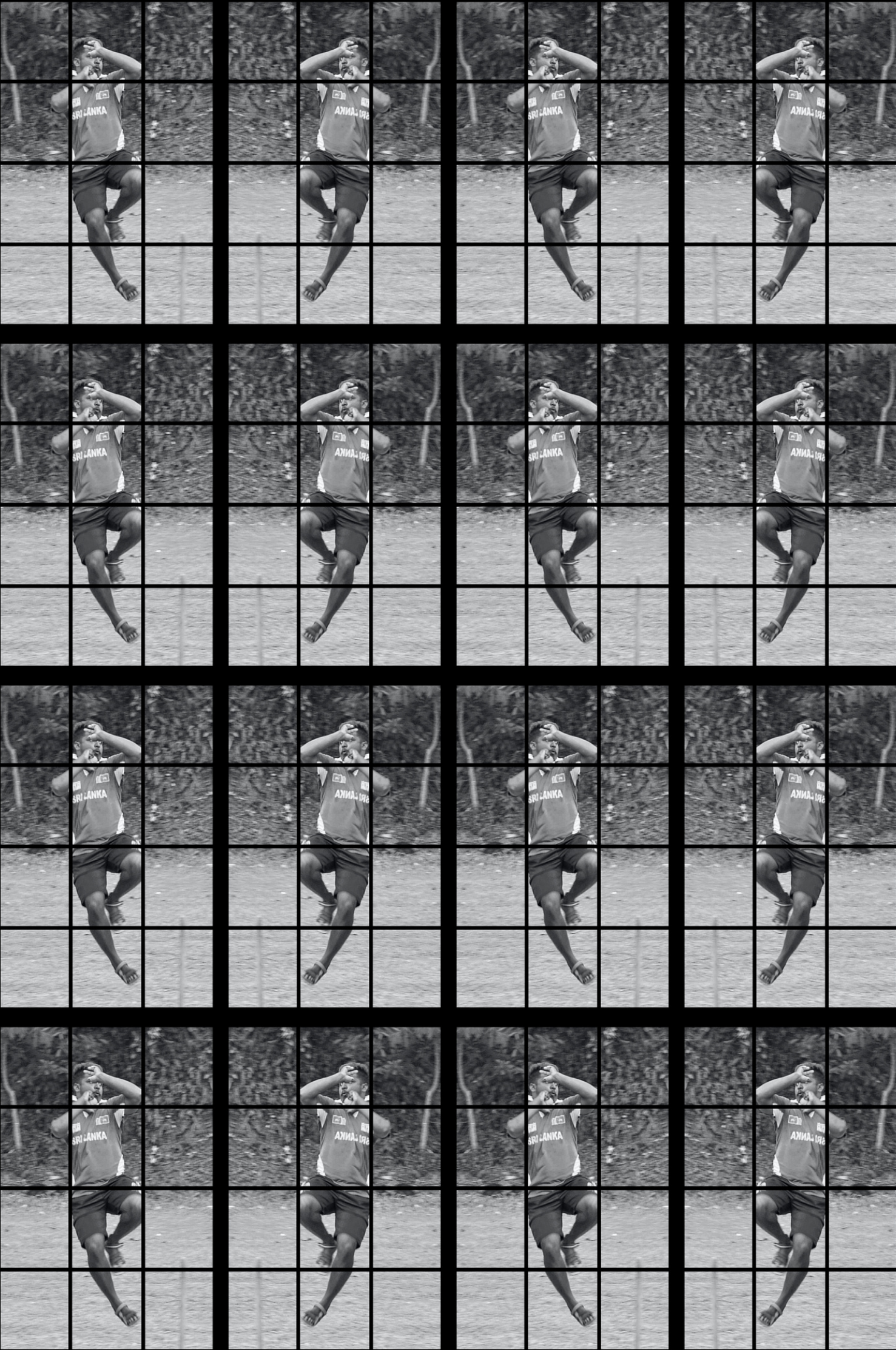


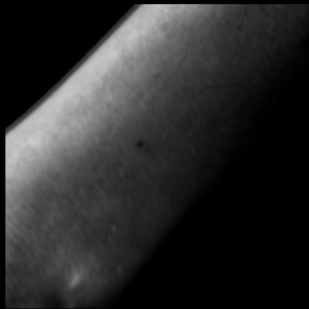


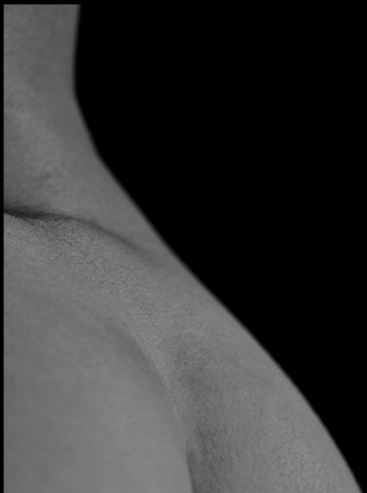
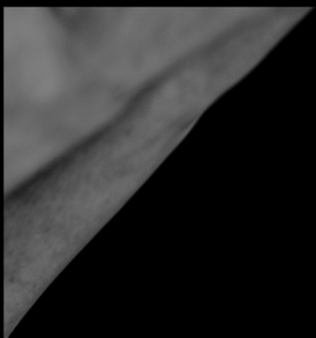
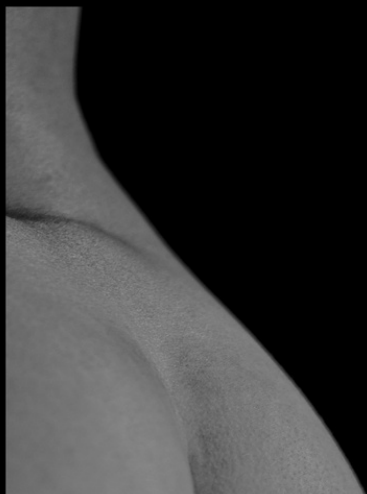


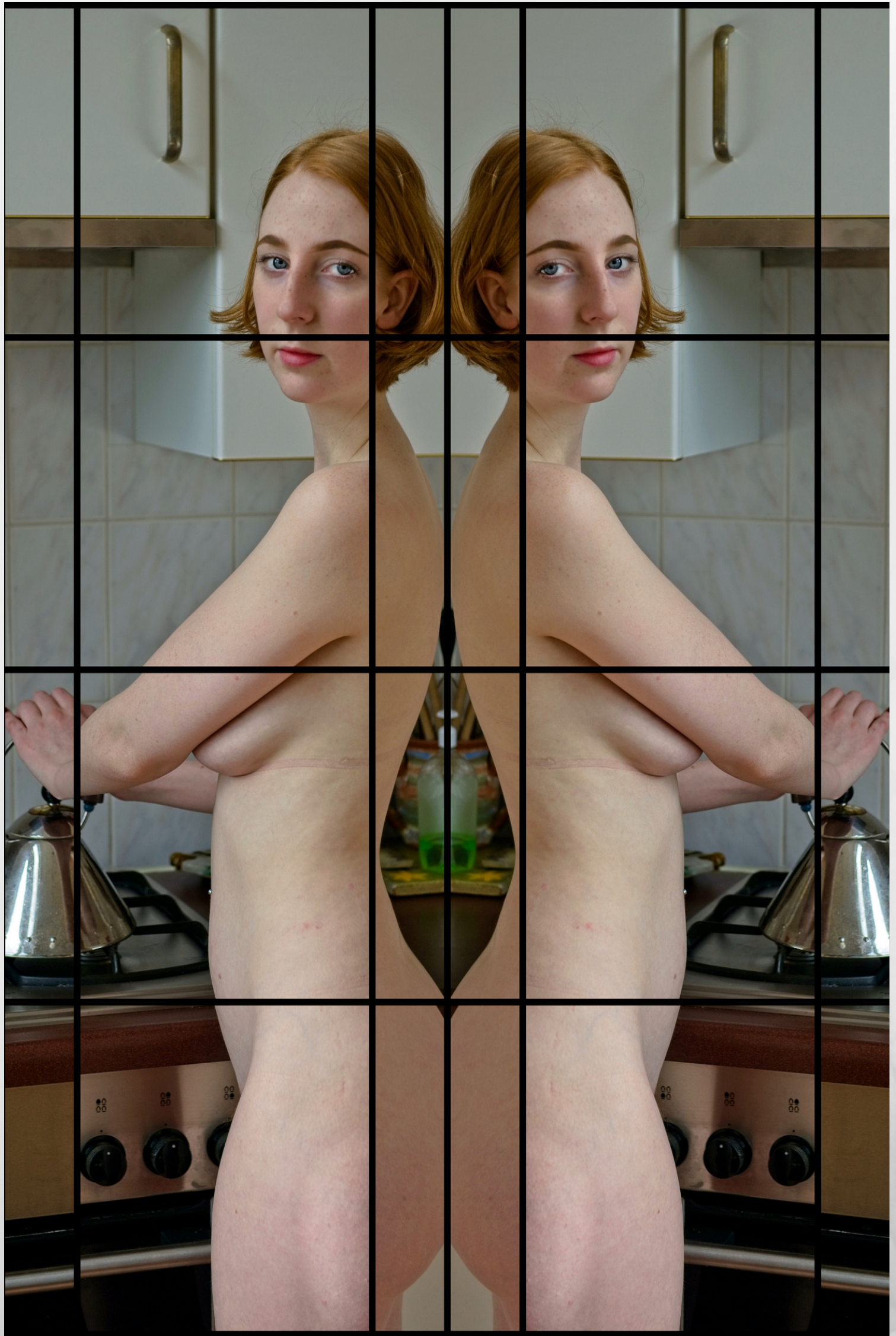


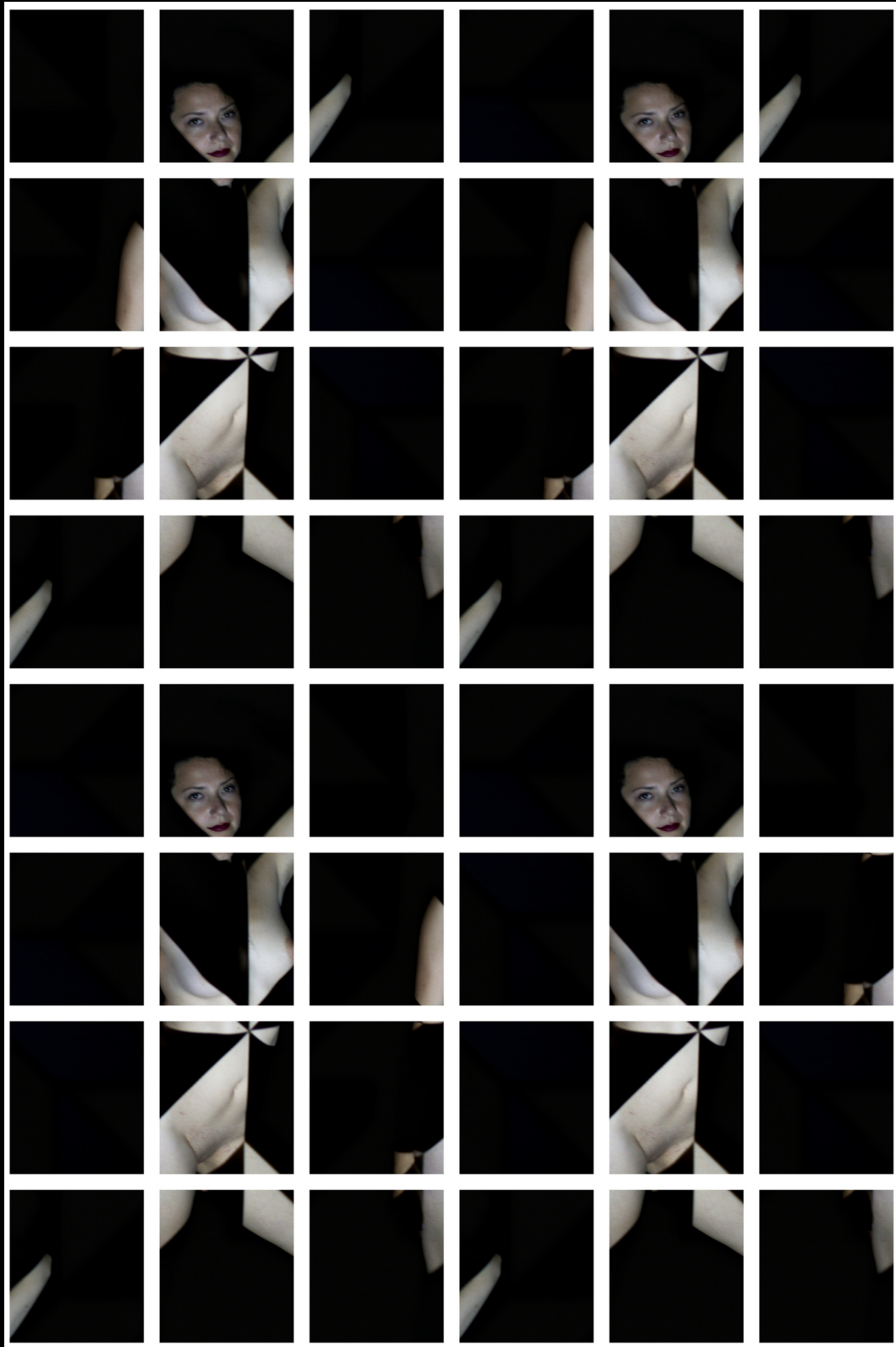


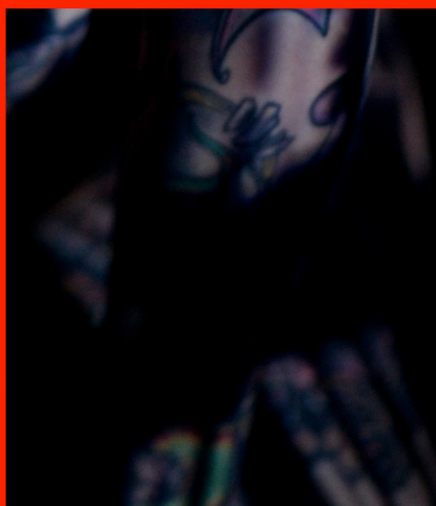
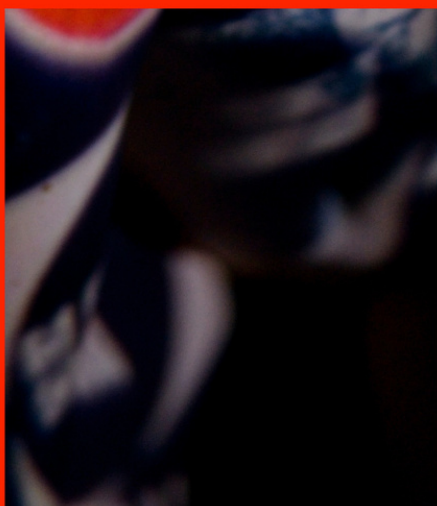
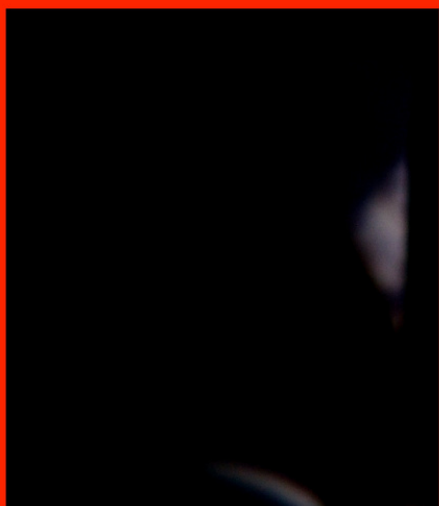
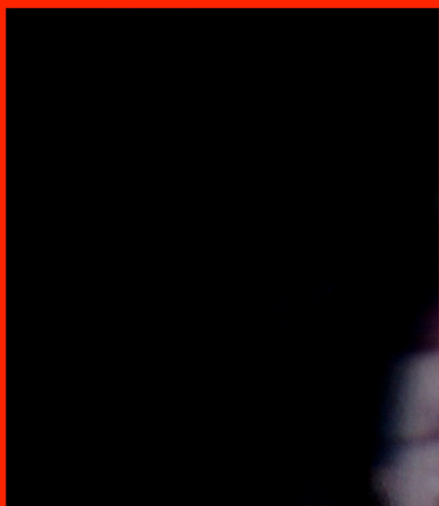
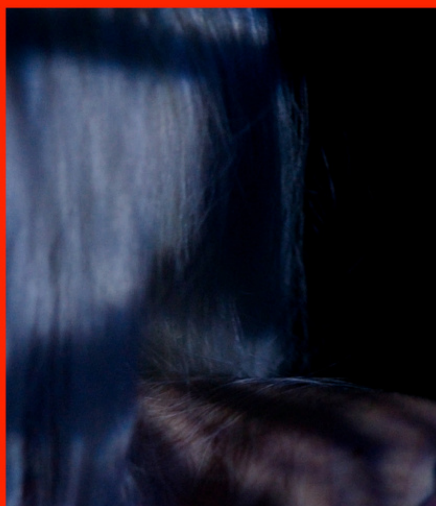


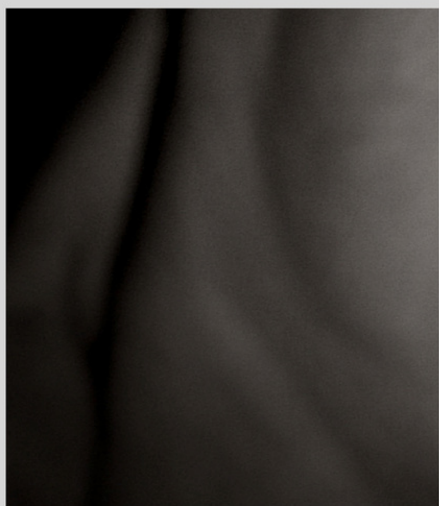
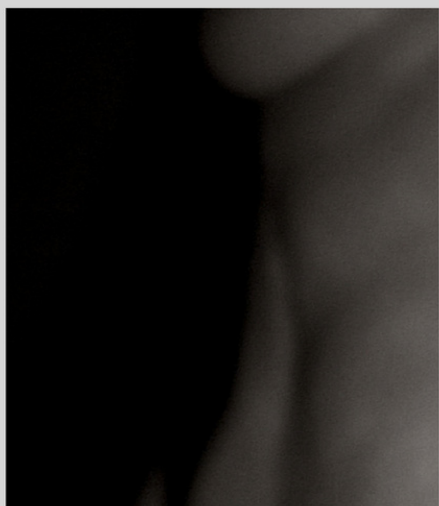
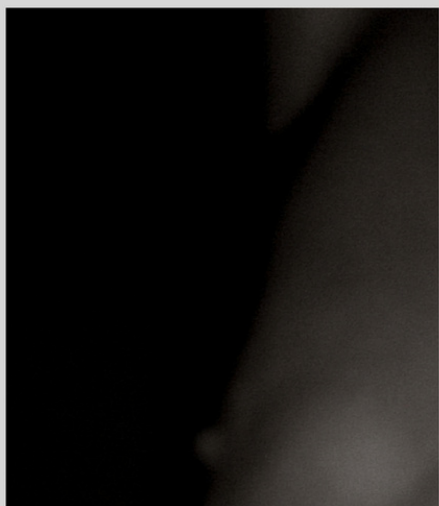


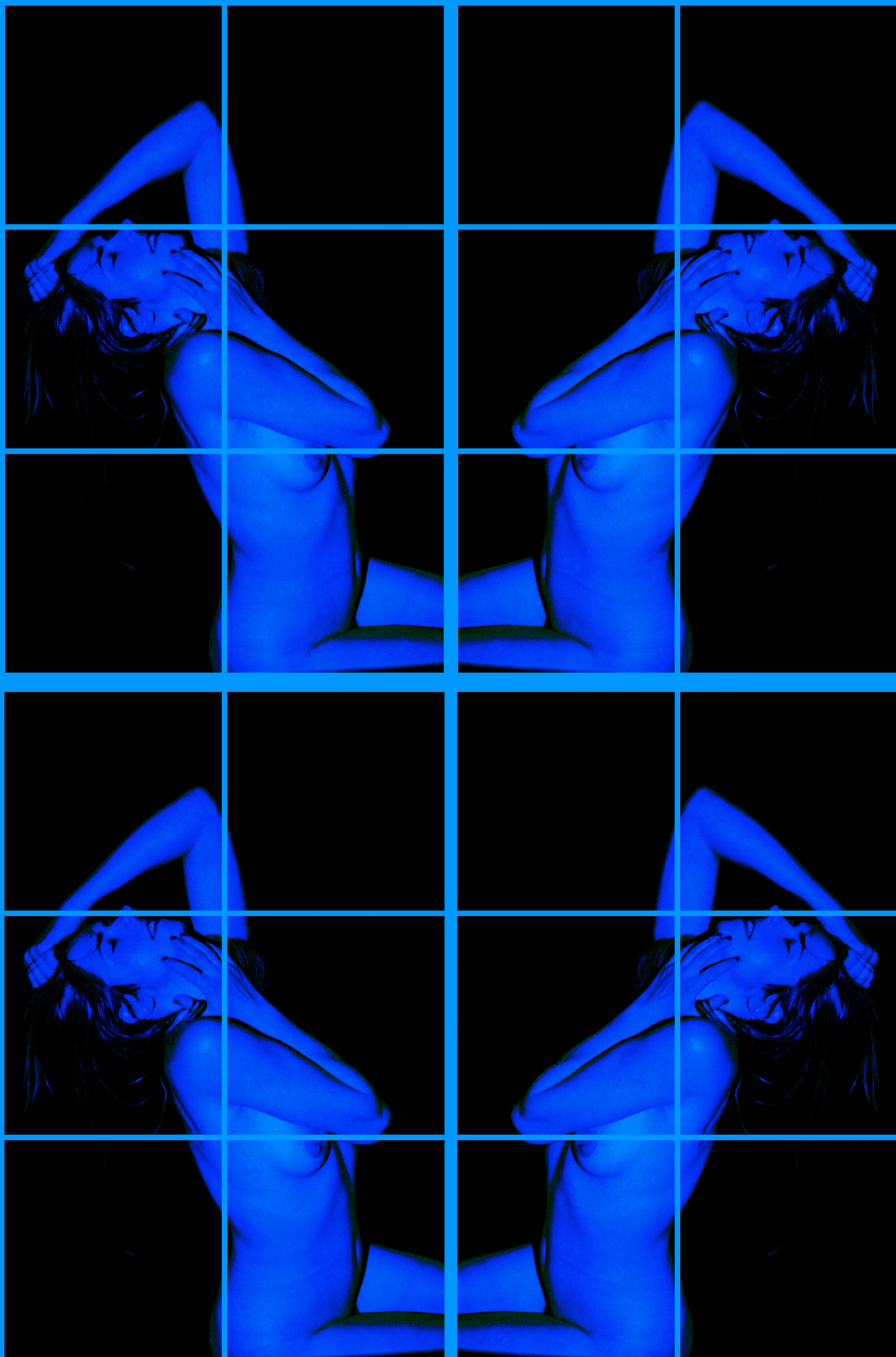














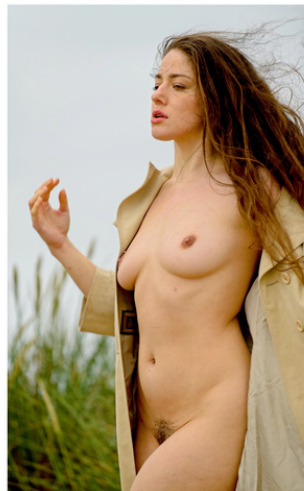














Joiners

