



Unnatural Disasters

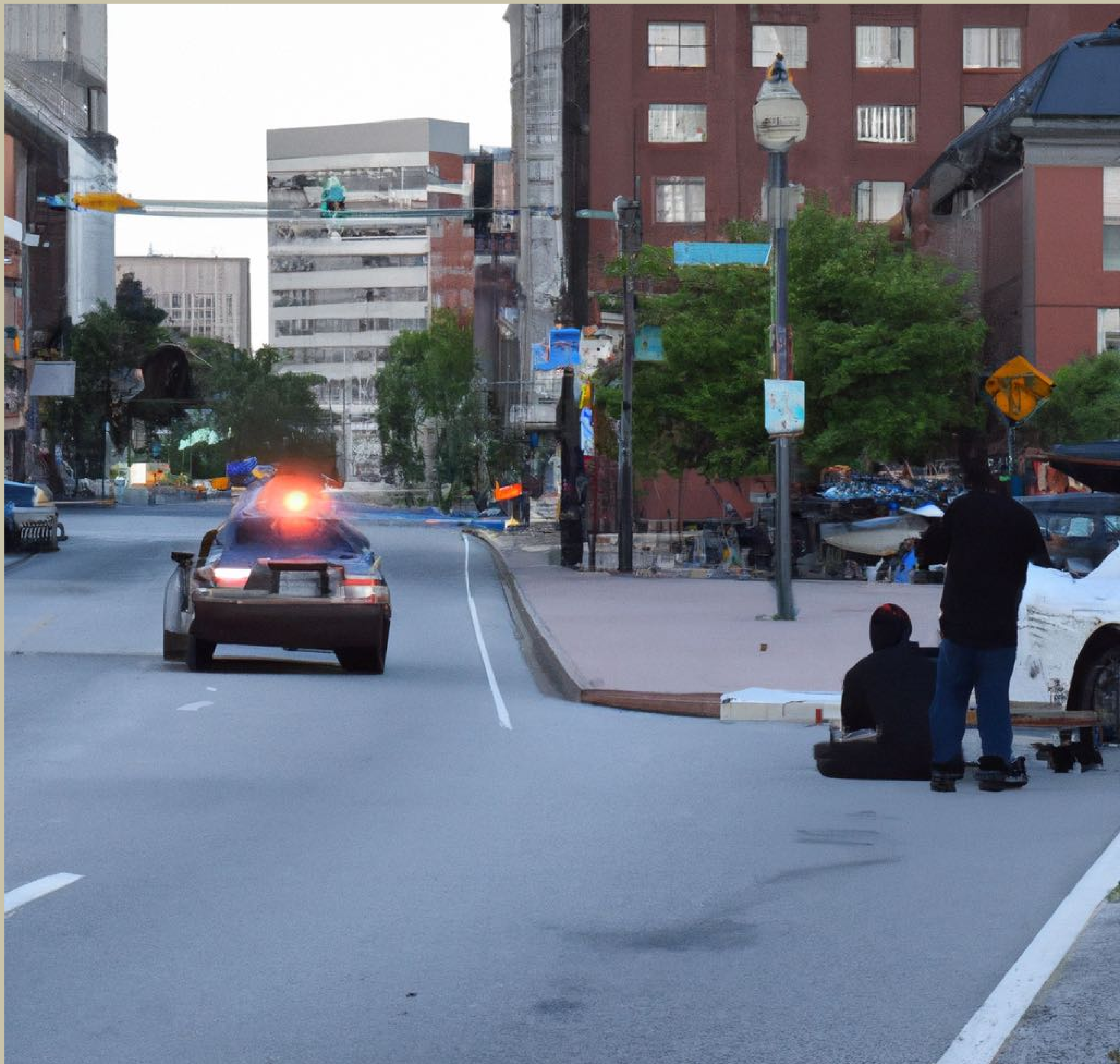
Unnatural Disasters

What is real?

These photos are not real. They were generated using DALL-E 2, which is an artificial intelligence program that can create original, realistic images and art from a text description. DALL-E-2 can combine concepts, attributes, and styles to generate photo-realistic images.

In this series, I create a series of "disasters" that, thankfully, have never occurred, or at least not in the way that is portrayed here. To do this, I employed a number of fairly straight-forward text expressions to generate these "photos", such as "car crash, train wreck, flood, boat wreck, tree fall, tornado, earthquake, drought, explosion, house fire, bridge collapse, lost child, and police shooting", to see what would be generated. Some of the AI-generated photos are more realistic than others, but taken collectively, this is a pretty frightening view of an imagined reality.

Viewing these images makes me wonder if this AI technology is redefining what it means to be a photographer. While there is no "perfect truth" in any photography, can we live with photographers who are "image generators"? I also wonder about the consequences of unfettered use of this new technology--will we be able to distinguish reality from an AI-generated version of the truth?





















































































































































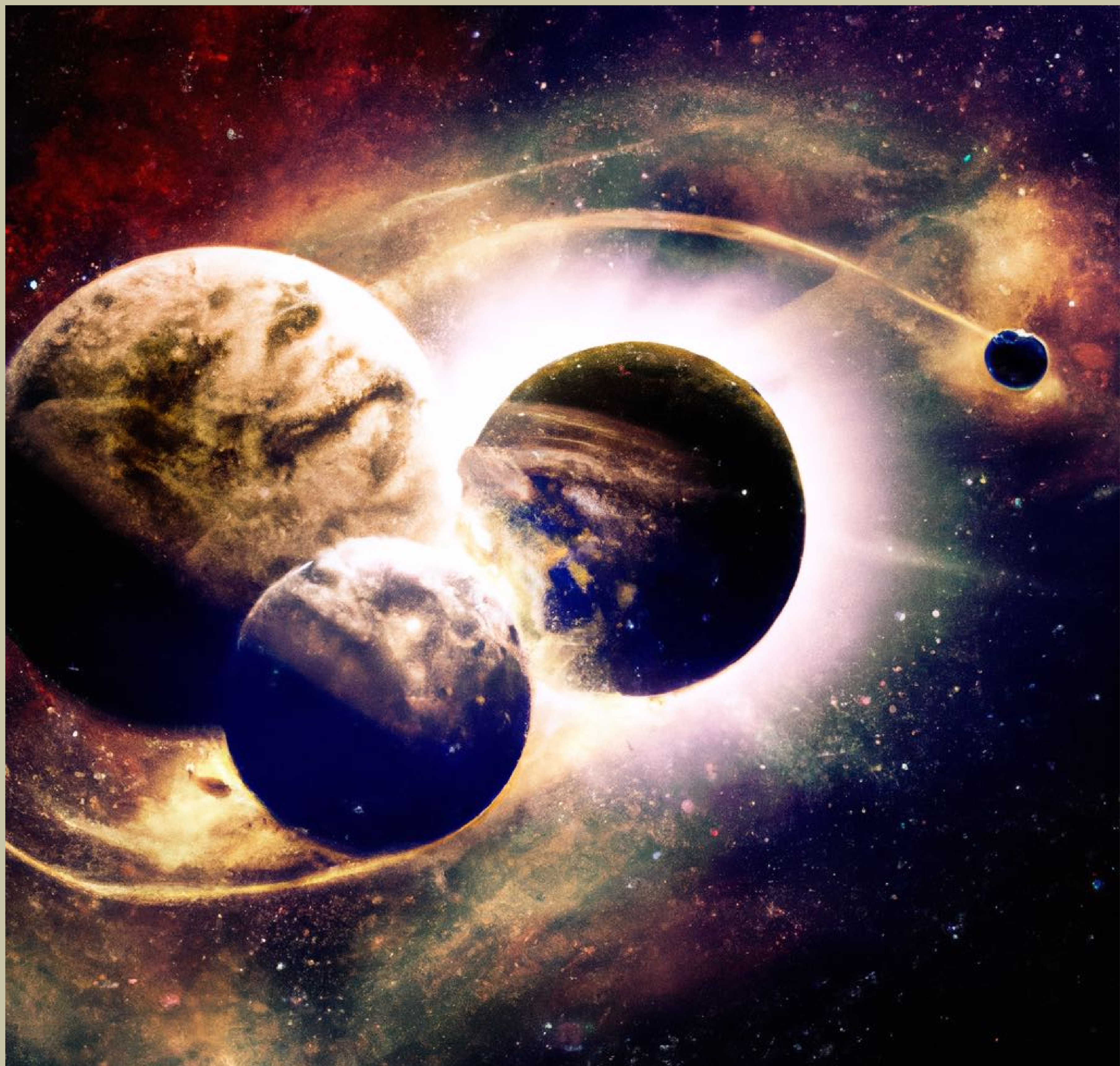








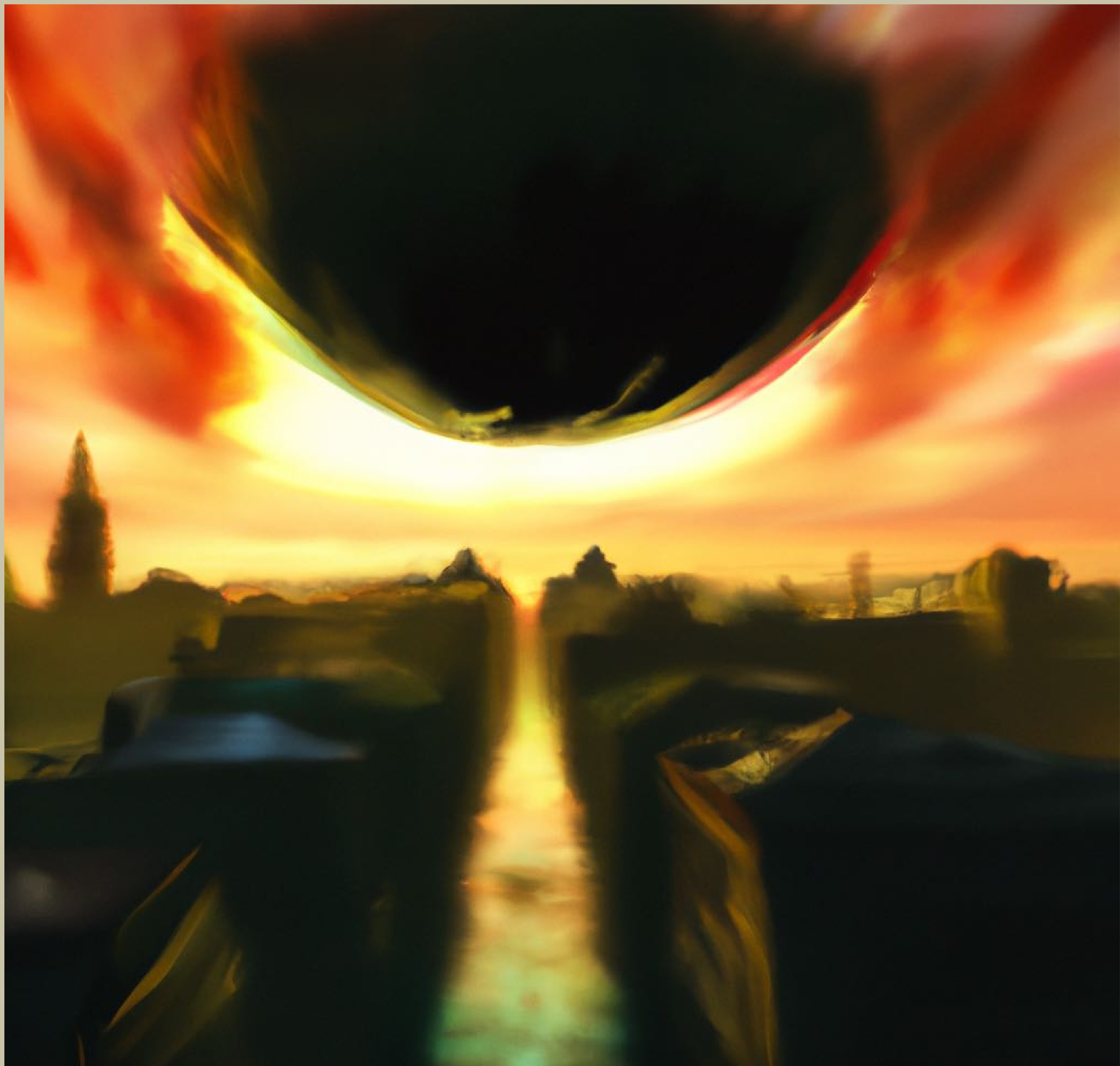


















Unnatural Disasters

